

**TOWNSHIP OF LAWRENCE
COUNTY OF MERCER, STATE OF NEW JERSEY**

FINANCIAL STATEMENTS AND
SUPPLEMENTAL DATA

December 31, 2015

**TOWNSHIP OF LAWRENCE
COUNTY OF MERCER, STATE OF NEW JERSEY**

TABLE OF CONTENTS

<u>Exhibit</u>	<u>Title</u>	<u>Page Number</u>
	INTRODUCTORY SECTION - UNAUDITED	1
	INDEPENDENT AUDITORS' REPORTS	
	Independent Auditors' Report.....	12
	Independent Auditors' Report on Internal Control over Financial Reporting and on Compliance and Other Matters Based on an Audit of Financial Statements Performed in Accordance with <i>Government Auditing Standards</i>	15
	BASIC FINANCIAL STATEMENTS	
	Combined Statement of Assets, Liabilities, Reserves and Fund Balance – All Fund Types and Account Group – Regulatory Basis	17
	Statement of Revenues, Expenditures and Changes in Fund Balance – Current Fund – Regulatory Basis	19
	Statement of Revenues, Expenditures and Changes in Fund Balance - Budget and Actual - Current Fund – Regulatory Basis	20
	Notes to Financial Statements	21
	SUPPLEMENTAL SCHEDULES	
	<u>Current Fund</u>	
A	Statement of Assets, Liabilities, Reserves and Fund Balance	39
A-1	Statement of Revenues and Other Credits to Income.....	41
A-2	Statement of Expenditures and Other Charges to Income.....	42
A-3	Schedule of Taxes Receivable and Analysis of Property Tax Levy	46
A-4	Schedule of Tax Title Liens Receivable	47
A-5	Statement of Property Acquired for Taxes (Assessed Valuation)	47
A-6	Schedule of 2014 Appropriation Reserves.....	48
A-7	Schedule of Sewer Charges Receivable.....	52
A-8	Schedule of Sewer Liens Receivable.....	53
A-9	Schedule of Federal and State Grants Receivable – Grant Fund	54
A-10	Schedule of Appropriated Reserves for State and Federal Grants	55
A-11	Schedule of Unappropriated Reserves for State and Federal Grants	59
A-12	Schedule of Due from State of New Jersey – Veteran & Senior Citizen Deductions	60
A-13	Statement of Deferred Charges – Special Emergency 40A:4-55.....	61

**TOWNSHIP OF LAWRENCE
COUNTY OF MERCER, STATE OF NEW JERSEY**

TABLE OF CONTENTS

<u>Exhibit</u>	<u>Title</u>	<u>Page Number</u>
	<u>Trust Funds</u>	
B	Statement of Assets, Liabilities, Reserves and Fund Balance	62
B-1	Schedule of Other Reserves and Special Deposits	63
B-2	Schedule of Reserve for Dog Fund Expenditures	64
B-3	Schedule of Reserve for Municipal Open Space.....	65
	<u>General Capital Fund</u>	
C	Statement of Assets, Liabilities, Reserves and Fund Balance	66
C-1	Statement of Changes in Fund Balance.....	67
C-2	Analysis of General Capital Cash and Cash Equivalents.....	68
C-3	Schedule of State and Federal Grants Receivable	71
C-4	Schedule of Deferred Charges to Future Taxation – Funded	72
C-5	Schedule of Deferred Charges - Unfunded	73
C-6	Schedule of Improvement Authorizations.....	75
C-7	Schedule of General Serial Bonds	78
C-8	Schedule of NJ Environmental Infrastructure Trust Loans Payable	79
C-9	Schedule of Green Trust Loans Payable	80
C-10	Schedule of Bond Anticipation Notes Payable	81
C-11	Statement of Changes in Capital Improvement Fund	83
C-12	Schedule of Loan Proceeds Receivable	84
C-13	Schedule of Bonds and Notes Authorized But Not Issued	85
C-14	Schedule of Reserve for Municipal Improvements.....	86
C-15	Schedule of Reserve for Sidewalk Assessments	87
C-16	Schedule of Reserve for Transportation Trust Fund	88
C-17	Schedule of Reserve for Federal and State Grants	89
C-18	Schedule of Reserve for Future Debt Service Costs.....	90
C-19	Schedule of Reserve for Green Trust.....	91
G	General Fixed Assets Account Group	92

SUPPLEMENTARY INFORMATION

GENERAL COMMENTS	93
SCHEDULE OF CURRENT YEAR FINDINGS AND RECOMMENDATIONS	94
SCHEDULE OF PRIOR YEAR FINDINGS AND RECOMMENDATIONS	95

Schedules

1	Officials in Office and Surety Bonds Unaudited.....	96
2	Schedule of Tax Rate, Tax Levy and Tax Collections – Unaudited	97

INTRODUCTORY SECTION - UNAUDITED

**TOWNSHIP OF LAWRENCE
COUNTY OF MERCER, STATE OF NEW JERSEY**

INTRODUCTORY SECTION – UNAUDITED
December 31, 2015

The comprehensive Annual Financial Report for the Township of Lawrence (the “Township”) for the fiscal year ended December 31, 2015, is submitted herewith. New Jersey statutes require the Township to annually issue a report on its financial position and activity. An independent Registered Municipal Accountant must audit the report. Responsibility for both the accuracy of the data and the completeness and fairness of the presentation, including all disclosures, rests with the management of the Township. To the best of our knowledge and belief, the enclosed data is accurate in all material respects. All disclosures necessary to enable the reader to gain an understanding of the activities of the Township have been included.

The Comprehensive Annual Financial Report is presented in four sections: an introductory section, a financial section, a statistical section, and general comments and recommendations. The introductory section, which is unaudited, includes this transmittal, an organizational chart, and a list of the Township’s principal elected and appointed officials. The financial section includes the general purpose financial statements and the combined and individual fund and account group financial statements with schedules, as well as the independent auditors’ report on these statements and schedules. The statistical section, which is unaudited, includes selected financial and demographic information.

General Description

The Township is a community of twenty-two square miles located in the center of Mercer County, New Jersey. Princeton and West Windsor Townships bound it on the north. Its southern neighbor is the City of Trenton, the state capital. It is bounded on the east by Hamilton Township and on the west by Ewing and Hopewell Townships.

The Township and its surrounding communities host one of the largest concentrations of diversified research and development activities in the nation. Among the country’s largest corporations that pursue such activities are Educational Testing Service and Bristol-Myers Squibb, both of which are in Lawrence. Smaller corporate and office complexes are concentrated at the various Interstate 95 interchanges within the community.

Three large retail establishments serve township residents, as well as residents of neighboring communities. The Quaker Bridge Mall, a regional enclosed shopping mall anchored by four major department stores, the Mercer Mall and the Lawrence Shopping Center provide retail opportunities within the Township’s borders.

Governmental Structure

The Township adopted the council/manager form of government in 1970. The Township Council (the “Council”) is composed of five part-time members elected on a partisan basis and serving the Township for four-year terms. Elections are held every two years, resulting in terms of office which overlap.

The Council elects a Mayor from its members. The Mayor serves a two-year term, presides at all Council meetings and has a voice and vote in the proceedings. The Mayor executes all bonds, notes, contracts and written obligations on behalf of the Township. Powers are limited to those expressly conferred by the charter.

**TOWNSHIP OF LAWRENCE
COUNTY OF MERCER, STATE OF NEW JERSEY**

INTRODUCTORY SECTION – UNAUDITED
December 31, 2015

Governmental Structure (Continued)

The Township Manager is the chief executive and administrator of the Township. The Township Manager serves the Council for an indefinite term of office and may be removed by a majority vote of the Council.

Services

Education

The Lawrence Township School District (the “District”) serves the Township, which is coterminous with the District. In addition to the public schools within the District, Notre Dame High School, Chapin School and The Lawrenceville School are located in the Township. Higher educational opportunities are available at Rider University, located in the Township, and Princeton University, Rutgers, The State University and The College of New Jersey, which are located within a short distance.

Municipal Clerk

The Council appoints the Municipal Clerk, who is responsible for keeping minutes and records of the proceedings of the Council and any Council committees. The Municipal Clerk is statutorily responsible for all elections. The Clerk’s Office also issues various permits and licenses. During 2015, two hundred (200) such permits and licenses were issued, of which twenty-five (25) were Alcoholic Beverage Licenses.

Public Safety Department

The Township provides public safety services through a full-time police division and a combination of paid and volunteer firefighters and emergency medical technicians. The police division consists of sixty-four (64) uniformed officers and civilian personnel. During calendar year 2015, the Lawrence Township Police responded to 31,326 calls for service. Overall reported crime remained unchanged in 2015 from 2014.

Fire service is provided by Lawrenceville Fire Company, Lawrence Road Fire Company and Slackwood Fire Company, which are all volunteer units except for daytime paid apparatus drivers. EMS service is now provided full-time by Township employees.

Department of Community Development

The Department of Community Development is comprised of the Divisions of Planning and Redevelopment, Engineering and Code Enforcement. The role of the Department is to regulate the development, construction and occupancy of property through the application of New Jersey statutes and local ordinances. Land development is regulated by the Township’s Land Use Ordinance and approved by the Township Planning and Zoning Boards.

The Division of Planning and Redevelopment services the Planning and Zoning Boards, as well as several other volunteer committees. In addition, housing rehabilitation and the Township’s Affordable Housing Program are directed from this division.

**TOWNSHIP OF LAWRENCE
COUNTY OF MERCER, STATE OF NEW JERSEY**

INTRODUCTORY SECTION – UNAUDITED
December 31, 2015

Services (Continued)

The Engineering Division principally serves three functions. The first is the inspection of improvements on development projects, insuring that the work meets the approved project plans. The second activity is the preparation of plans and specifications and project supervision for privately contracted municipal public improvements – primarily roads. The third function is assisting the Department of Public Works with various in-house public improvement projects.

Code Enforcement personnel review the plans and perform site inspections for all construction undertaken within the Township to insure compliance with construction codes. Additionally, the division performs fire inspections on non-residential properties and housing inspections on multi-family units.

Department of Finance

The Department of Finance is responsible for the collection, disbursement and investment of all Township funds and the administration of the Township's self-insurance program. The Township Council appoints a Chief Financial Officer who directs the activities of the department. Through the office of the Tax Assessor, the value of property is assessed for tax purposes. The Tax Collector is accountable for the billing and collecting of both property taxes and sewer service charges. In 2015, the assessor and collector were responsible for assessing and collecting revenue from approximately 11,125 properties.

The Finance Department also oversees the purchase of all goods and services, assists in the preparation of the municipal budget and provides for an annual audit of all Township financial records.

The Township is self-insured, with appropriate stop loss coverage, for general liability, worker's compensation, auto liability and law liability. Effective January 1, 2013, Lawrence Township joined the Garden State Municipal Joint Insurance Fund for identical coverage.

Debt management also falls within the purview of the Department of Finance. The New Jersey Bond Law authorizes bonded indebtedness for municipalities. The amount of indebtedness is limited by statute and is not to exceed three and one-half percent of the average of the equalized assessed valuation of the prior three years. At December 31, 2015, the percentage of net debt to the average equalized assessed value for Lawrence Township was 0.554%. Debt issuers are rated based on creditworthiness. The Township of Lawrence enjoys a "Moody's" debt rating of "Aa3."

Department of Health

The Department of Health inspects all food establishments and enforces the state and local health codes. The core activities of the Health Department are health promotion programs, environmental health inspections, communicable disease control and infant, child and adult health services, including immunizations. In 2015, the department conducted 1,567 health inspections and administered 559 immunizations. Other services that were provided during 2015 included vision, hearing and speech screenings, blood pressure screenings, blood sugar screenings and a health education program for residents. The department also provided 374 rabies vaccinations for cats and dogs.

**TOWNSHIP OF LAWRENCE
COUNTY OF MERCER, STATE OF NEW JERSEY**

INTRODUCTORY SECTION – UNAUDITED
December 31, 2015

Services (Continued)

Department of Public Works

The Department of Public Works is responsible for the maintenance of all municipal property, including parks, municipal buildings and Township roads. Trash removal and recycling are provided through contract services.

The Township, along with Princeton, funds and operates the Joseph H. Maher Jr. Ecological Center, a leaf and brush composting facility on Princeton Pike in Lawrence. Leaves and brush are collected and turned into mulch and wood chips which are used in public parks and on municipal grounds. These products also are made available to residents of the three communities at no cost and to non-residents or businesses for a fee.

Roadway maintenance is provided by the Public Works Department for roadway resurfacing and through private contractors for complete roadway reconstruction. On average, the department resurfaces approximately 40,000 square yards of roadway annually.

Recreation Department

The Department of Recreation plans and coordinates recreational activities for all age groups and interest levels. Programming is year-round and includes activities such as aquatic instruction, summer enrichment, seasonal sports and after-school programs. The department also arranges community activities, including the Memorial Day Parade, Fourth of July fireworks, Community Day, Kids Triathlon, Veterans Day Observances, and an annual holiday tree-lighting ceremony. In 2015, there were 2,012 registrations for youth programs and 272 registrations for adult activities.

Within the Recreation Department is the Office on Aging, which is responsible for providing various recreational programs to the senior citizens of the community. The Lawrence Township Senior Citizen Center offers senior residents an opportunity to gather for special programs, bingo, social interaction and a daily hot lunch program. The center also hosts the activities of forty (40) senior citizen clubs.

Municipal Court

The Township operates its own Municipal Court with a full-time staff and part-time municipal court judge. By state law, the Council appoints the Municipal Court Judge to a term of three years. During 2015, the Municipal Court had a caseload of 13,271 traffic violations. In addition, 2,407 criminal cases were filed and 3,047 were disposed of. The Court generated \$1,405,496.10 in revenue, with the Township retaining \$676,455.87.

Utilities

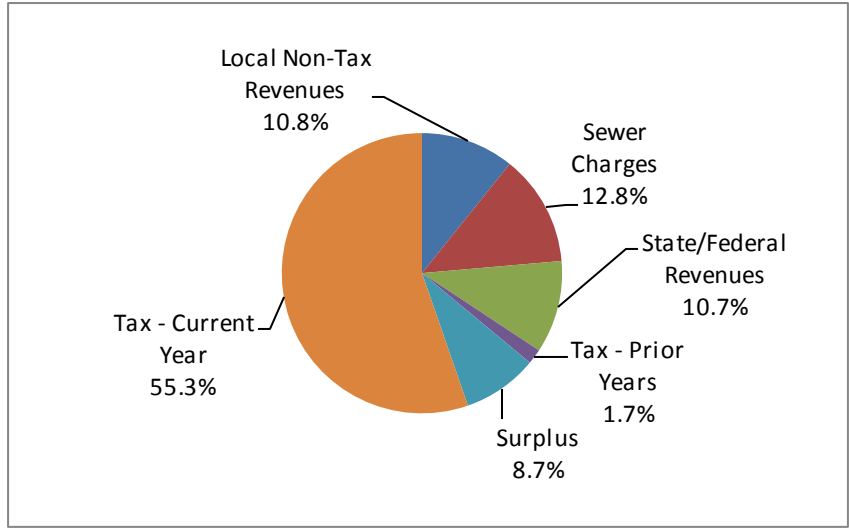
Water services are provided and billed directly to the property owner by the City of Trenton Water Utility, the Aqua Water Company and the New Jersey American Water Company.

The Ewing-Lawrence Sewerage Authority (“ELSA”) provides for the collection, treatment and disposal of sanitary sewage. The Township is billed for its proportionate share of ELSA’s cost of operations and, in turn, recovers those costs by charging system users for the service.

**TOWNSHIP OF LAWRENCE
COUNTY OF MERCER, STATE OF NEW JERSEY**

**INTRODUCTORY SECTION - UNAUDITED
2015 MUNICIPAL BUDGET REVENUES**

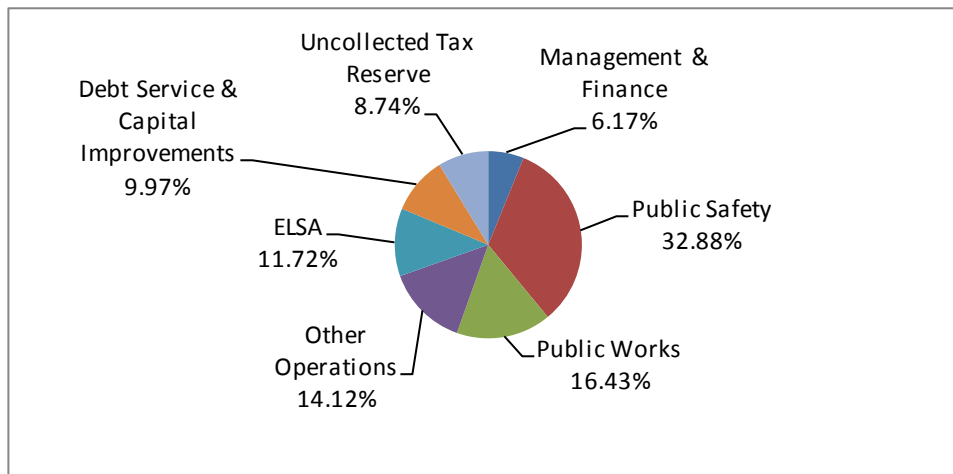
1. Local Non-Tax Revenues	\$ 4,655,000.00
2. Sewer Charges	5,553,000.00
3. State/Federal Revenues	4,614,879.80
4. Tax - Prior Years	745,000.00
5. Surplus	3,750,000.00
6. Tax - Current Year	23,903,496.66
Total	<u>\$ 43,221,376.46</u>



**TOWNSHIP OF LAWRENCE
COUNTY OF MERCER, STATE OF NEW JERSEY**

**INTRODUCTORY SECTION - UNAUDITED
2015 MUNICIPAL BUDGET EXPENDITURES**

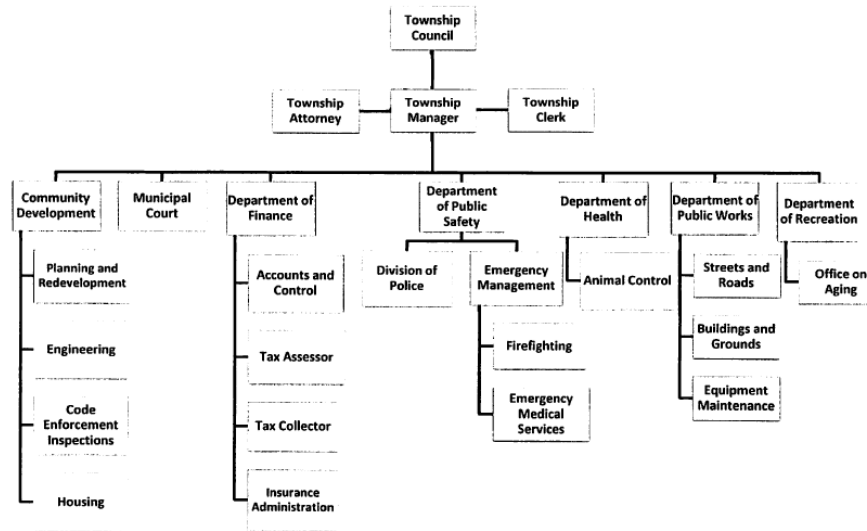
1. Management & Finance	\$ 2,654,590.98
2. Public Safety	14,213,309.36
3. Public Works	7,099,385.49
4. Other Operations	6,105,003.97
5. ELSA	5,064,000.00
6. Debt Service & Capital Improvements	4,307,230.00
7. Uncollected Tax Reserve	3,777,856.66
Total	<u>\$ 43,221,376.46</u>



TOWNSHIP OF LAWRENCE
COUNTY OF MERCER, STATE OF NEW JERSEY

INTRODUCTORY SECTION - UNAUDITED

TOWNSHIP OF LAWRENCE



**TOWNSHIP OF LAWRENCE
COUNTY OF MERCER, STATE OF NEW JERSEY**

**INTRODUCTORY SECTION - UNAUDITED
2014-2015 MUNICIPAL BUDGET REVENUES**

	2014			2015		
	Budgeted	Actual	Difference	Budgeted	Actual	Difference
Locally Generated (1)	\$ 3,831,000.00	\$ 4,151,312.57	\$ 320,312.57	\$ 3,537,502.00	\$ 4,287,160.41	\$ 749,658.41
Municipal Court	465,000.00	555,127.25	90,127.25	527,000.00	676,927.95	149,927.95
Payment in Lieu of Taxes (2)	282,000.00	377,508.25	95,508.25	282,000.00	397,220.35	115,220.35
Interest on Investments/Delinquent Taxes (3)	327,000.00	1,121,953.58	794,953.58	320,000.00	378,466.19	58,466.19
Sewer Service Charge	5,553,000.00	5,637,594.55	84,594.55	5,553,000.00	5,581,298.32	28,298.32
Energy Receipts Tax	3,976,814.00	3,976,814.00	-	3,976,814.00	3,976,814.00	-
Other State & Federal Revenues (4)	199,668.32	199,668.32	-	257,990.19	257,990.19	-
Property Tax Prior Years	945,000.00	2,574,451.57	1,629,451.57	745,000.00	1,227,409.61	482,409.61
Surplus Utilized	3,450,000.00	3,450,000.00	-	3,750,000.00	3,750,000.00	-
Property Tax Current Year	24,139,043.31	25,788,066.86	1,649,023.55	23,903,496.66	24,914,556.12	1,011,059.46
Grants after Budget Adopted (5)	263,991.62	263,991.62	-	368,573.61	368,573.61	-
TOTAL REVENUES	\$ 43,432,517.25	\$ 48,096,488.57	\$ 4,663,971.32	\$ 43,221,376.46	\$ 45,816,416.75	\$ 2,595,040.29

(1) Alcoholic Beverage Licenses, Other Licenses, Fees and Permits, Recreation Program Fees, CATV Franchise Fees, Uniform Construction Code Fees, Ambulance Service Fees, Red Light Camera Fees, Uniform Fire Safety Act, Hotel Tax, Quakerbridge Mall Police, Capital Surplus, Premium on Note Sale, Reserve for Sale of Municipal Assets, Reserve for Sidewalks

(2) Payments in Lieu - Non-Profit Housing and Tax Exempt Property Contributions

(3) Investment Interest and Interest, Costs, and Penalties on Delinquent Taxes

(4) Safe & Secure, Municipal Alliance, Tanning Establishment Inspections, Emergency Management Performance, Recycling Tonnage, Comcast Technology, Police K-9

(5) Municipal Alcohol Education/Rehabilitation Program, FEMA-Hazard Mitigation Grant, BMS Safety Town Program, Bulletproof Vests, NJDEP clean Communities Program, Click it or Ticket, DDEF, Drive Sober or Get Pulled Over, Ebola Monitoring, EMS Private Donations, Mercer County EMS Contribution, Highway Safety Fund - Safe Corridors

**TOWNSHIP OF LAWRENCE
COUNTY OF MERCER, STATE OF NEW JERSEY**

**INTRODUCTORY SECTION - UNAUDITED
2013-2015 MUNICIPAL BUDGET - EXPENDITURES**

Expenditure Category	2013	2014	2015
1. Administrative & Executive (1)	\$ 1,892,344.34	\$ 1,954,550.72	\$ 1,916,454.48
2. Financial Administration (2)	1,876,529.22	1,769,681.40	1,706,569.08
3. Public Safety:			
Police	11,523,853.66	11,383,082.85	11,303,454.80
Non-Police (3)	2,618,434.92	2,727,370.90	2,499,947.20
4. Public Works:			
Operations	2,829,211.41	3,151,799.90	3,327,992.40
Trash Collection/Landfill	2,823,000.00	2,832,999.00	2,899,000.00
5. Recreation and Community Programs (4)	840,590.02	858,529.89	828,007.60
6. Health	619,538.85	620,603.75	639,272.18
7. Community Development	2,587,554.57	2,292,770.61	2,216,299.25
8. Boards & Committees	149,600.00	159,200.00	171,100.00
9. Utilities	1,552,200.00	1,610,000.00	1,639,000.00
10. Municipal Court	440,898.00	477,987.00	468,202.00
11. ELSA	5,190,700.00	5,175,000.00	5,064,000.00
12. Capital Improvement Fund	125,000.00	350,000.00	350,000.00
13. Debt Service	4,037,453.00	3,782,061.00	3,782,230.00
14. Reserve for Uncollected Taxes	3,684,883.86	3,816,591.35	3,777,856.66
15. Public & Private Revenues Offset with Appropriations	225,821.88	206,297.28	263,417.19
16. Grants after Adoption	486,325.74	263,991.62	368,573.61
	<u>\$ 43,503,939.49</u>	<u>\$ 43,432,517.25</u>	<u>\$ 43,221,376.46</u>

- (1) Governing Body, Township Clerk, Manager's Office, Legal Services, Accumulated Absences, Buildings and Grounds, Public Defender, Housing
(2) Accounts and Control, Auditor, Collection and Assessment of Taxes
(3) Emergency Management, Fire Salaries, Fire Service Program, Contributions to Fire Companies and Rescue Squad, Emergency Medical Services, Fire Hydrant Services, Ambulance Services Red Light Camera Program
(4) Senior Citizens Center, Community Action Program, Municipal Alliance

**TOWNSHIP OF LAWRENCE
COUNTY OF MERCER, STATE OF NEW JERSEY**

INTRODUCTORY SECTION - UNAUDITED

ELECTED OFFICIALS

Cathleen Lewis, Mayor
Dr. David Maffei, Councilman
Michael S. Powers, Councilman
Stephen Brame, Councilman (Deceased 7/29/15)
James S. Kownacki, Councilman
Christopher Bobbitt, Councilman (Since 11/20/15)
Ian Dember, Councilman (7/30/15-11/19/15)

MUNICIPAL OFFICIALS

Richard S. Krawczun, Township Manager/Chief Financial Officer
Kathleen S. Norcia, Township Clerk
David Roskos, Township Attorney
Mark Ubry, Police Chief
Gregory Whitehead, Director of Public Works
Nicole Finacchio, Court Director
Kevin Nerwinski, Municipal Court Judge
Carol A. Chamberlain, Health Officer
Christine Lee, Recreation Superintendent (December 2015)
Susan Mcloskey, Tax Collector
Geoffrey D. Acolia, Tax Assessor
Peter Kiriakatis, Comptroller

**TOWNSHIP OF LAWRENCE
COUNTY OF MERCER, STATE OF NEW JERSEY**

INTRODUCTORY SECTION - UNAUDITED

CONSULTANTS AND ADVISORS

Auditors

Mercadien, P.C., Certified Public Accountants
P.O. Box 7648
Princeton, NJ 08543-7648

Attorney

David Roskos
Eckert, Seamans, Cherin, & Mellott
50 West State Street
P.O. Box 1298
Trenton, NJ 08607-1298

Bond Counsel

McManimon & Scotland
75 Livingston Avenue
Roseland, NJ 07068

Consulting Planner

Clarke Caton Hintz
400 Station Place
West Trenton, NJ 08628

Phoenix Advisors, LLC
4 West Park Street
Bordentown, NJ 08505

INDEPENDENT AUDITORS' REPORTS

INDEPENDENT AUDITORS' REPORT

To the Mayor and Council Members of
The Township of Lawrence

Report on the Financial Statements

We have audited the accompanying financial statements – regulatory basis of the various funds of the Township of Lawrence, County of Mercer, State of New Jersey (the “Township”), which includes the combined statement of assets, liabilities, reserves and fund balance – all fund types and account group, as of December 31, 2015, and the related statement of revenues, expenditures and changes in fund balance – current fund and statement of revenues, expenditures and changes in fund balance – budget and actual – current fund for the year then ended, and the related notes to financial statements, which collectively comprise the Township’s basic financial statements, as listed in the table of contents.

Management’s Responsibility for the Financial Statements

Management is responsible for the preparation and fair presentation of these financial statements in accordance with financial reporting provisions of the Division of Local Government Services, Department of Community Affairs, State of New Jersey, this includes the design, implementation and maintenance of internal control relevant to the preparation and fair presentation of financial statements that are free from material misstatement, whether due to fraud or error.

Auditors' Responsibility

Our responsibility is to express opinions on these financial statements based on our audit. We conducted our audit in accordance with auditing standards generally accepted in the United States of America, the standards applicable to financial audits contained in *Government Auditing Standards*, issued by the Comptroller General of the United States and requirements of audit prescribed by the Division of Local Government Services, Department of Community Affairs, State of New Jersey. Those standards require that we plan and perform the audit to obtain reasonable assurance about whether the financial statements are free from material misstatement.

An audit involves performing procedures to obtain audit evidence about the amounts and disclosures in the financial statements. The procedures selected depend on the auditors’ judgment, including the assessment of the risks of material misstatement of the financial statements, whether due to fraud or error. In making those risk assessments, the auditor considers internal control relevant to the entity’s preparation and fair presentation of the financial statements in order to design audit procedures that are appropriate in the circumstances, but not for the purpose of expressing an opinion on the effectiveness of the entity’s internal control. Accordingly, we express no such opinion. An audit also includes evaluating the

• AMERICAN INSTITUTE OF
CERTIFIED PUBLIC ACCOUNTANTS

• NEW JERSEY SOCIETY OF
CERTIFIED PUBLIC ACCOUNTANTS

• NEW YORK SOCIETY OF
CERTIFIED PUBLIC ACCOUNTANTS

• PENNSYLVANIA INSTITUTE OF
CERTIFIED PUBLIC ACCOUNTANTS

• REGISTERED WITH THE PCAOB

INDEPENDENT AUDITORS' REPORT (CONTINUED)

Auditors' Responsibility (Continued)

appropriateness of accounting policies used and the reasonableness of significant accounting estimates made by management, as well as evaluating the overall presentation of the financial statements.

We believe that the audit evidence we have obtained is sufficient and appropriate to provide a basis for our audit opinions.

Basis for Adverse Opinion on U.S. Generally Accepted Accounting Principles

As described in Note A, these financial statements are prepared by the Township on the basis of the financial reporting provisions of the Division of Local Government Services, Department of Community Affairs, State of New Jersey, which is a basis of accounting other than accounting principles generally accepted in the United States of America, to meet with the requirements of the State of New Jersey.

The effects on the financial statements of the variances between the regulatory basis of accounting described in Note A and accounting principles generally accepted in the United States of America, although not reasonably determinable, are presumed to be material.

Adverse Opinion

In our opinion, because of the significance of the matter discussed in the "Basis for Adverse Opinion on U.S. Generally Accepted Accounting Principles" paragraph, the financial statements referred to above do not present fairly, in accordance with accounting principles generally accepted in the United States of America, the financial position of each fund of the Township as of December 31, 2015, or the changes in financial position for the year then ended.

Opinion on Regulatory Basis of Accounting

In our opinion, the financial statements referred to above present fairly, in all material respects, the combined statement of assets, liabilities, reserves and fund balance of the various funds and account group of the Township, as of December 31, 2015, and the statement of revenues, expenditures and changes in fund balance of the current fund for the year then ended in accordance with the financial reporting provisions of the Division of Local Government Services, Department of Community Affairs, State of New Jersey as described in Note A.

Report on Summarized Comparative Information

We have previously audited the Township's 2014 financial statements, and we expressed an unmodified audit opinion on those audited financial statements in our report dated June 22, 2015, in accordance with the financial reporting provisions described in Note A. In our opinion, the summarized comparative information presented herein as of and for the year ended December 31, 2014, is consistent, in all material respects, with the audited financial statements from which it has been derived.

Report on Supplementary and Other Information

Our audit was conducted for the purpose of forming opinions on the financial statements that collectively comprise the Township's basic financial statements. The supplemental schedules as required by the Division of Local Government Services, Department of Community Affairs, State of New Jersey, are presented for purposes of additional analysis and are not a required part of the basic financial statements.

INDEPENDENT AUDITORS' REPORT (CONTINUED)

Report on Supplementary and Other Information (Continued)

The supplemental schedules are the responsibility of management and were derived from and relate directly to, the underlying accounting and other records used to prepare the basic financial statements. Such information has been subjected to the auditing procedures applied in the audit of the basic financial statements and certain additional procedures, including comparing and reconciling such information directly to the underlying accounting and other records used to prepare the basic financial statements or to the basic financial statements themselves, and other additional procedures in accordance with auditing standards generally accepted in the United States of America. In our opinion, the supplemental schedules are fairly stated, in all material respects, in relation to the basic financial statements as a whole, on the basis of accounting described in Note A.

The introductory section, supplementary information and statistical section as listed in the table of contents has not been subject to the auditing procedures applied in the audit of the basic financial statements, and accordingly, we do not express an opinion or provide any assurance on them.

Other Reporting by Government Auditing Standards

In accordance with *Government Auditing Standards*, we have also issued our report dated June 29, 2016, on our consideration of the Township's internal control over financial reporting and on our tests of its compliance with certain provisions of laws, regulations, contracts and grant agreements and other matters. The purpose of that report is to describe the scope of our testing of internal control over financial reporting and compliance and the results of that testing, and not to provide an opinion on internal control over financial reporting or on compliance. That report is an integral part of an audit performed in accordance with *Government Auditing Standards* in considering the Township's internal control over financial reporting and compliance.



Warren A. Broudy, CPA, CGFM, PSA, CGMA
Registered Municipal Accountant
License No. 554

MERCADIEN, P.C.
CERTIFIED PUBLIC ACCOUNTANTS

June 29, 2016

INDEPENDENT AUDITORS' REPORT ON INTERNAL CONTROL OVER FINANCIAL REPORTING AND ON COMPLIANCE AND OTHER MATTERS BASED ON AN AUDIT OF FINANCIAL STATEMENTS PERFORMED IN ACCORDANCE WITH GOVERNMENT AUDITING STANDARDS

To the Council Members of
the Township of Lawrence

We have audited, in accordance with auditing standards generally accepted in the United States of America, the standards applicable to financial audits contained in *Government Auditing Standards* issued by the Comptroller General of the United States, and requirements of audit prescribed by the Division of Local Government Services, Department of Community Affairs, State of New Jersey, the financial statements, of the Township of Lawrence (the "Township"), as of and for the year ended December 31, 2015, and the related notes to financial statements, which collectively comprise the Township's basic financial statements, and have issued our report thereon dated June 29, 2016, in which we expressed an adverse opinion on the conformity of the financial statements with accounting principles generally accepted in the United States of America due to differences between those principles and accounting practices prescribed by the Division of Local Government Services, Department of Community Affairs, State of New Jersey.

Internal Control Over Financial Reporting

In planning and performing our audit of the financial statements, we considered the Township's internal control over financial reporting (internal control) to determine the audit procedures that are appropriate in the circumstances for the purposes of expressing our opinions on the financial statements, but not for the purpose of expressing an opinion on the effectiveness of the Township's internal control. Accordingly, we do not express an opinion on the effectiveness of the Township's internal control.

A deficiency in internal control exists when the design or operation of a control does not allow management or employees, in the normal course of performing their assigned functions, to prevent, or detect and correct, misstatements on a timely basis. *A material weakness* is a deficiency, or a combination of deficiencies, in internal control, such that there is a reasonable possibility that a material misstatement of the Township's financial statements will not be prevented, or detected and corrected on a timely basis. *A significant deficiency* is a deficiency, or a combination of deficiencies, in internal control that is less severe than a material weakness, yet important enough to merit attention by those charged with governance.

• AMERICAN INSTITUTE OF
CERTIFIED PUBLIC ACCOUNTANTS

• NEW JERSEY SOCIETY OF
CERTIFIED PUBLIC ACCOUNTANTS

• NEW YORK SOCIETY OF
CERTIFIED PUBLIC ACCOUNTANTS

• PENNSYLVANIA INSTITUTE OF
CERTIFIED PUBLIC ACCOUNTANTS

• REGISTERED WITH THE PCAOB

**INDEPENDENT AUDITORS' REPORT ON INTERNAL CONTROL OVER FINANCIAL REPORTING
AND ON COMPLIANCE AND OTHER MATTERS BASED ON AN AUDIT OF FINANCIAL
STATEMENTS PERFORMED IN ACCORDANCE WITH
GOVERNMENT AUDITING STANDARDS (CONTINUED)**

Internal Control Over Financial Reporting (Continued)

Our consideration of internal control was for the limited purpose described in the first paragraph of this section and was not designed to identify all deficiencies in internal control that might be material weaknesses or significant deficiencies. Given these limitations, during our audit we did not identify any deficiencies in internal control that we consider to be material weaknesses. However, material weaknesses may exist that have not been identified.

Compliance and Other Matters

As part of obtaining reasonable assurance about whether the Township's financial statements are free from material misstatement, we performed tests of its compliance with certain provisions of laws, regulations, contracts and grant agreements, noncompliance with which could have a direct and material effect on the determination of financial statement amounts. However, providing an opinion on compliance with those provisions was not an objective of our audit, and accordingly, we do not express such an opinion. The results of our tests disclosed no instances of noncompliance or other matters that are required to be reported under *Government Auditing Standards*.

Purpose of this Report

The purpose of this report is solely to describe the scope of our testing of internal control and compliance and the results of that testing, and not to provide an opinion on the effectiveness of the Township's internal control or on compliance. This report is an integral part of an audit performed in accordance with *Government Auditing Standards* in considering the Township's internal control and compliance. Accordingly, this communication is not suitable for any other purpose.



**Warren A. Broudy, CPA, CGFM, PSA, CGMA
Registered Municipal Accountant
License No. 554**

**MERCADIEN, P.C.
CERTIFIED PUBLIC ACCOUNTANTS**

June 29, 2016

BASIC FINANCIAL STATEMENTS

**TOWNSHIP OF LAWRENCE
COUNTY OF MERCER, STATE OF NEW JERSEY**

**COMBINED STATEMENT OF ASSETS, LIABILITIES, RESERVES AND FUND BALANCE – ALL FUND TYPES AND ACCOUNT GROUP –
REGULATORY BASIS**

December 31, 2015

(With comparative totals for 2014)

	Current & Grant Funds	General Capital Fund	Trust Funds (1)	Fixed Asset Account Group	Totals	
					2015	2014
ASSETS						
Cash and Cash Equivalents	\$ 18,251,722.53	\$ 4,592,181.64	\$ 12,197,901.07	\$ -	\$ 35,041,805.24	\$ 46,344,668.35
Due from State of New Jersey per Chapter 73, P.L. 1976	61,467.82	-	-	-	61,467.82	68,217.82
Federal and State Grants Receivable	532,952.06	1,508,750.34	-	-	2,041,702.40	1,963,747.46
Receivables and Other Assets						
Loan Proceeds Receivable	-	4,905.00	-	-	4,905.00	4,905.00
Delinquent Property Taxes	1,215,079.37	-	-	-	1,215,079.37	1,161,309.61
Delinquent Sewer Charges Receivable	310,430.00	-	-	-	310,430.00	346,410.47
Revenue Accounts Receivable	49,575.82	-	-	-	49,575.82	37,007.78
Tax Title Liens Receivable	1,465,114.15	-	-	-	1,465,114.15	1,447,637.81
Sewer Liens Receivable	8,371.09	-	-	-	8,371.09	8,889.56
Property Acquired for Taxes at Assessed Valuation	168,410.00	-	-	-	168,410.00	168,410.00
Receivables and other assets	-	-	-	-	-	7,959.97
Interfunds receivable	48,119.87	-	-	-	48,119.87	143,221.23
Deferred Charges	320,000.00	27,780,726.56	-	-	28,100,726.56	31,132,663.10
Fixed Assets	-	-	-	87,318,222.00	87,318,222.00	86,351,913.00
	<u>\$ 22,431,242.71</u>	<u>\$ 33,886,563.54</u>	<u>\$ 12,197,901.07</u>	<u>\$ 87,318,222.00</u>	<u>\$ 155,833,929.32</u>	<u>\$ 169,186,961.16</u>

(1) - Includes Animal Control, Housing & Community, Self-Insurance and Other Trusts

**TOWNSHIP OF LAWRENCE
COUNTY OF MERCER, STATE OF NEW JERSEY**

**COMBINED STATEMENT OF ASSETS, LIABILITIES, RESERVES AND FUND BALANCE – ALL FUND TYPES AND ACCOUNT GROUP –
REGULATORY BASIS (CONTINUED)**

December 31, 2015

(With comparative totals for 2014)

	Current & Grant Funds	General Capital Fund	Trust Funds (1)	Fixed Asset Account Group	Totals	
					2015	2014
LIABILITIES, RESERVES AND FUND BALANCE						
Tax/Sewer Fee Overpayments	\$ 463,627.83	\$ -	\$ -	\$ -	\$ 463,627.83	\$ 662,088.55
Appropriation Reserves	2,209,194.82	-	-	-	2,209,194.82	2,141,351.02
Prepaid Taxes/Sewer Fees	648,491.05	-	-	-	648,491.05	668,005.82
Federal and State Grants						
Appropriated Reserves	1,500,752.96	-	-	-	1,500,752.96	1,616,621.98
Unappropriated Reserves	13,637.92	-	-	-	13,637.92	118,282.19
Reserve for Encumbrances	332,187.13	-	-	-	332,187.13	422,692.28
Other Liabilities and Reserves						
Due to State of New Jersey	12,051.84	-	-	-	12,051.84	28,553.84
Due to County for Added Taxes	103,318.67	-	-	-	103,318.67	194,850.60
Reserve for Debt Service	-	746,797.55	-	-	746,797.55	562,897.55
Capital Improvement Fund	-	97,641.05	-	-	97,641.05	75,641.05
Other Reserves	3,502,994.02	2,815,753.29	11,997,241.05	-	18,315,988.36	27,857,769.47
Special Emergency Note Payable	320,000.00	-	-	-	320,000.00	480,000.00
Improvement Authorizations	-	7,506,152.82	-	-	7,506,152.82	9,052,904.67
Reserve for Encumbrances	610,964.38	1,512,992.63	-	-	2,123,957.01	3,131,608.95
Interfund Payable	-	-	48,119.87	-	48,119.87	143,221.23
Bond Anticipation Notes	-	9,625,000.00	-	-	9,625,000.00	9,270,000.00
Serial Bonds	-	10,765,000.00	-	-	10,765,000.00	13,300,000.00
NJ Environmental Infrastructure Trust Loan Payable	-	120,057.53	-	-	120,057.53	190,716.49
Green Trust Loan Payable	-	277,043.07	-	-	277,043.07	375,353.65
Reserve for Receivables	3,265,100.30	-	-	-	3,265,100.30	3,312,886.46
Accounts Payable	148,988.09	-	-	-	148,988.09	187,183.93
Other Payables	-	-	152,540.15	-	152,540.15	136,622.10
Investment in Fixed Assets	-	-	-	87,318,222.00	87,318,222.00	86,351,913.00
Fund Balance	9,299,933.70	420,125.60	-	-	9,720,059.30	8,905,796.33
	<u>\$ 22,431,242.71</u>	<u>\$ 33,886,563.54</u>	<u>\$ 12,197,901.07</u>	<u>\$ 87,318,222.00</u>	<u>\$ 155,833,929.32</u>	<u>\$ 169,186,961.16</u>

(1) - Includes Animal Control, Housing & Community, Self-Insurance and Other Trusts

**TOWNSHIP OF LAWRENCE
COUNTY OF MERCER, STATE OF NEW JERSEY**

STATEMENT OF REVENUES, EXPENDITURES AND CHANGES IN FUND BALANCE –
CURRENT FUND – REGULATORY BASIS
Year Ended December 31, 2015

Revenues	
Fund Balance Anticipated	\$ 3,750,000.00
Miscellaneous Revenues	8,150,170.31
State Aid w/o Offsetting Appropriations	3,988,316.00
Special Items with Offsetting Appropriations	3,041,739.27
Special Items with Prior Consent of the Director	744,225.44
Delinquent Taxes	1,227,409.61
Amount to be Raised by Taxes for Support of Municipal Budget	24,914,556.12
Total Revenues	<u>45,816,416.75</u>
Other Credits to Income	97,906,549.67
Total Revenues	<u>143,722,966.42</u>
Expenditures	
Budget and Emergency Appropriations	
Appropriations within "CAP" Operations	
Salaries and Wages	13,147,135.00
Other Expenses	12,452,139.00
Deferred Charges and Statutory Expenditures - Municipal	3,034,141.00
Appropriations Excluded From "CAP" Operations	
Salaries and Wages	345,353.57
Other Expenses	6,332,521.23
Municipal Debt Service	3,782,230.00
Reserve for Uncollected Taxes	3,777,856.66
Capital Improvements	350,000.00
Total Expenditures	<u>43,221,376.46</u>
Other Expenses and Charges to Income	95,822,326.99
Total Expenditures	<u>139,043,703.45</u>
Statutory Excess to Fund Balance	4,679,262.97
Fund Balance, January 1, 2015	<u>8,370,670.73</u>
	13,049,933.70
Decreased by Utilization in 2015 Budget	<u>3,750,000.00</u>
Fund Balance, December 31, 2015	<u><u>\$ 9,299,933.70</u></u>

**TOWNSHIP OF LAWRENCE
COUNTY OF MERCER, STATE OF NEW JERSEY**

**STATEMENT OF REVENUES, EXPENDITURES AND CHANGES IN FUND BALANCE –
BUDGET AND ACTUAL – CURRENT FUND – REGULATORY BASIS
Year Ended December 31, 2015**

	Budget as Modified	Actual	Variance
Revenues			
Fund Balance Anticipated	\$ 3,750,000.00	\$ 3,750,000.00	\$ -
Miscellaneous Revenues	7,622,000.00	8,150,170.31	528,170.31
State Aid w/o Offsetting Appropriations	3,988,316.00	3,988,316.00	-
Special Items with Offsetting Appropriations	1,831,563.80	3,041,739.27	1,210,175.47
Special Items with Consent of the Director	1,381,000.00	744,225.44	(636,774.56)
Delinquent Taxes	745,000.00	1,227,409.61	482,409.61
Amount to be Raised by Taxes for Support of Municipal Budget	23,903,496.66	24,914,556.12	1,011,059.46
Total Budget Revenues	<u>43,221,376.46</u>	<u>45,816,416.75</u>	<u>2,595,040.29</u>
Other Credits to Income	-	97,906,549.67	97,906,549.67
Total Revenues	<u>43,221,376.46</u>	<u>143,722,966.42</u>	<u>100,501,589.96</u>
Expenditures			
Budget and Emergency Appropriations			
Appropriations within "CAP" Operations			
Salaries and Wages	13,147,135.00	13,147,135.00	-
Other Expenses	12,452,139.00	12,452,139.00	-
Deferred Charges and Statutory Expenditures - Municipal	3,034,141.00	3,034,141.00	-
Appropriations Excluded From "CAP" Operations			
Salaries and Wages	345,353.57	345,353.57	-
Other Expenses	6,332,521.23	6,332,521.23	-
Municipal Debt Service	3,782,230.00	3,782,230.00	-
Reserve for Uncollected Taxes	3,777,856.66	3,777,856.66	-
Capital Improvements	350,000.00	350,000.00	-
Total Budget Expenditures	<u>43,221,376.46</u>	<u>43,221,376.46</u>	<u>-</u>
Other Expenses and Charges to Income	-	95,822,326.99	95,822,326.99
Total Expenditures	<u>43,221,376.46</u>	<u>139,043,703.45</u>	<u>95,822,326.99</u>
Statutory Excess to Fund Balance	<u>\$ -</u>	4,679,262.97	<u>\$ 4,679,262.97</u>
Fund Balance, January 1, 2015		<u>8,370,670.73</u>	
		13,049,933.70	
Decreased by Utilization in 2015 Budget		<u>3,750,000.00</u>	
Fund Balance, December 31, 2015		<u>\$ 9,299,933.70</u>	

**TOWNSHIP OF LAWRENCE
COUNTY OF MERCER, STATE OF NEW JERSEY**

NOTES TO FINANCIAL STATEMENTS

A. SUMMARY OF SIGNIFICANT ACCOUNTING POLICIES

Reporting Entity

The financial statements of the Township of Lawrence (the "Township") include every board, body, officer or commission supported and maintained wholly or in part by funds appropriated by the Township, as required by N.J.S. 40A:5-5. However, the operations of the Board of Education and volunteer fire companies are not included in the Township's financial statements.

Description of Funds

The accounting policies of the Township conform to the accounting principles applicable to municipalities which have been prescribed by the Division of Local Government Services, Department of Community Affairs, State of New Jersey. Such principles and practices are designed primarily for determining compliance with legal provisions and budgeting restrictions and as a means of reporting on the stewardship of public officials with respect to public funds. Under this method of accounting, the Township accounts for its financial transactions through the following separate funds:

Current Fund – The Current Fund is used for resources and expenditures for governmental operations of a general nature, including federal and state grant funds, except as otherwise noted.

Other Trust Fund – The Other Trust Fund is used for receipts, custodianship and disbursement of funds in accordance with the purpose for which each reserve was created, pursuant to the provisions of N.J.S.A. 40A:4-39.

Animal Control Fund – receipt and disbursement of funds related to animal control, primarily dogs and cats.

Housing and Community Development Fund – receipt and disbursement of funds related to affordable housing in the Township.

Self-Insurance Fund – receipt and disbursement of funds related to various types of insurance covered by the Township.

General Capital Fund – The General Capital Fund is used for the receipt and disbursement of funds for the acquisition of general capital facilities, including federal and state grants in aid of construction, other than those acquired in the Current Fund, including the status of bonds and notes authorized for said purposes.

Basis of Accounting

The Governmental Accounting Standard Board ("GASB") is the accepted standards-setting body for establishing government accounting and financial reporting principles. GASB's Codification of Governmental Accounting and Financial Reporting Standards recognizes three fund categories as appropriate for the accounting and reporting of the financial position and results of operations in accordance with generally accepted accounting principles ("GAAP"). This structure of funds differs from the organization of funds prescribed under the regulatory

**TOWNSHIP OF LAWRENCE
COUNTY OF MERCER, STATE OF NEW JERSEY**

NOTES TO FINANCIAL STATEMENTS

A. SUMMARY OF SIGNIFICANT ACCOUNTING POLICIES

Basis of Accounting (Continued)

basis of accounting utilized by the Township. The resultant presentation of financial position and results of operations in the form of financial statements is not intended to present the general-purpose financial statement required by GAAP.

A modified accrual basis of accounting is followed with minor exceptions. Modifications from the accrual basis are as follows:

Revenues are recorded when received in cash, except for certain amounts that are due from other governmental units. Receipts from federal and state grants are realized as revenue when anticipated in the Township budget. Receivables for property taxes and sewer charges are recorded with offsetting reserves on the balance sheet of the Township's Current Fund. Accordingly, such amounts are not recorded as revenue until collected. Other amounts which are due to the Township are also recorded as receivables with offsetting reserves and are recorded as revenue when received.

Cash equivalents are carried at cost. Investments are limited by New Jersey Statute 40A:5-15.1 to bonds or obligations of, or guaranteed by, the federal government and bonds or other obligations of federal or local units having a maturity date not more than 397 days from the date of purchase.

Expenditures are recorded on the "budgetary" basis of accounting. Generally, expenditures are recorded when an amount is encumbered for goods or services through the issuance of a purchase order in conjunction with the Encumbrance Accounting System. Outstanding encumbrances at December 31, 2015, are reported as a cash liability in the financial statements and constitute part of the Township's statutory appropriation reserve balance. Appropriation reserves covering unexpended appropriation balances are automatically created at the end of each year and are recorded as liabilities, except for amounts which may be canceled by the governing body. Appropriation reserves are available, until lapsed at the close of the succeeding year, to meet specific claims, commitments or contracts incurred during the preceding fiscal year. Lapsed appropriation reserves are recorded as income. Appropriations for principal payments on outstanding general capital bonds and notes are provided on the cash basis, and interest on general capital indebtedness is on the cash basis. Expenditures for compensated absences are recorded in the accounting period in which the payments are made to the dedicated trust fund established for this purpose. GAAP require that expenditures be recorded when they are incurred.

Pension expenses are recorded on a cash basis as billed by the State of New Jersey. Thus, net pension liability and related deferred inflows and outflows are not recorded on the statement of assets, liabilities, reserves and fund balance.

Foreclosed Property - Foreclosed property is recorded in the Current Fund at the assessed valuation at the time such property was acquired. The balance of foreclosed property is fully reserved.

Interfund Receivables and Payables - Interfund receivables in the Current Fund are recorded with offsetting reserves; interfund payables are created by charges to operations. Income is recognized in the year the receivables are liquidated. Interfund receivables in other funds are not offset by reserves.

**TOWNSHIP OF LAWRENCE
COUNTY OF MERCER, STATE OF NEW JERSEY**

NOTES TO FINANCIAL STATEMENTS

A. SUMMARY OF SIGNIFICANT ACCOUNTING POLICIES (CONTINUED)

Basis of Accounting (Continued)

Inventories of Supplies - The cost of inventories of supplies for all funds is recorded as an expenditure at the time individual items are purchased. The cost of inventories is not included in the various fund balance sheets.

Self-Insurance Reserves - Charges to self-insurance reserves are recorded when payments of claims and related expenses are made. Increases to self-insurance reserves are recorded from budgetary appropriations in the accounting period during which budgetary expenditures are recorded. Other earnings are credited to reserves when received in cash. GAAP require that liabilities for incurred claims be recorded as determined actuarially.

Sale of Municipal Assets - Cash proceeds from the sale of Township-owned property may be realized as revenue or reserved until utilized as an item of revenue in a subsequent year budget. Reserved proceeds are recorded as a cash liability in the Current Fund. GAAP require that revenue be recognized in the period that the sale is made.

General Fixed Assets - In accordance with New Jersey Administrative Code 5:30-5-6, *Accounting for Governmental Fixed Assets*, as promulgated by the Division of Local Government Services, which differs in certain respects from GAAP, the Township is required to have and maintain a fixed asset and reporting system for non-expendable personal property with an acquisition cost of \$5,000 or more per unit and a useful life of more than one year. Fixed assets used in governmental operations ("general fixed assets") are accounted for in the General Fixed Assets Account Group. Public domain ("infrastructure") general fixed assets consisting of certain improvements other than buildings, such as roads, bridges, curbs and gutters, streets and sidewalks, and drainage systems, are not capitalized. For the classification of land, buildings and other improvements, actual cost was used. With respect to machinery and equipment, actual cost was used whenever possible. However, a significant amount of items were valued at their estimated or replacement cost, since the original cost was not available. No depreciation is provided for in the financial statements.

Expenditures for construction in progress are recorded in the Capital Funds until such time as the construction is completed and the related asset is placed in operation.

Fixed assets acquired through grants in aid or contributed capital have not been accounted for separately.

It is the policy of the Township not to capitalize interest cost on fixed assets constructed.

Budgets are adopted on the same basis of accounting utilized for the preparation of the Township's financial statements.

Reserve for Uncollected Taxes represents an appropriation made to allow total current tax billings to be levied at an amount greater than the appropriations needed. Reserve for Uncollected Taxes is not recognized under GAAP.

**TOWNSHIP OF LAWRENCE
COUNTY OF MERCER, STATE OF NEW JERSEY**

NOTES TO FINANCIAL STATEMENTS

A. SUMMARY OF SIGNIFICANT ACCOUNTING POLICIES (CONTINUED)

Other Post-Employment Benefits (“OPEB”) Other than Pensions

On July 1, 2007, the Township implemented GASB Number 45, which covers accounting and financial reporting requirements for government employers which provide post-employment benefits other than pensions. Since the Township participates in a multiple-employer cost-sharing plan (Public Employees’ Retirement System (“PERS”)), the Township’s portion of this liability and cost is calculated and recorded at the State of New Jersey level and included in the state’s Comprehensive Annual Financial Report. The Township records OPEB expense based on billings from the state PERS. Required financial statement disclosure requirements are included in Note L of these audited financial statements.

Rounding

Some schedules in the financial statements may have dollar differences due to rounding adjustments.

B. CASH AND CASH EQUIVALENTS AND INVESTMENTS

Cash and cash equivalents and investments include amounts on deposit, petty cash, change funds and short-term investments with original maturities of 397 days or less.

New Jersey municipal units are required by N.J.S.A. 40A:5-14 to deposit public funds in a bank or trust company having its place of business in the State of New Jersey and organized under the laws of the United States or of the State of New Jersey or in the New Jersey Cash Management Fund. N.J.S.A. 40A:5-15.1 provides a list of investments which may be purchased by New Jersey municipal units. In addition, other state statutes permit investments in obligations issued by local authorities and other state agencies.

N.J.S.A. 17:9-41 et seq. establishes the requirements for the security of deposits of governmental units. The statute requires that no governmental unit shall deposit public funds in a public depository unless such funds are secured in accordance with the Governmental Unit Deposit Protection Act (“GUDPA”), a multiple financial institutional collateral pool, which was enacted in 1970 to protect governmental units from a loss of funds on deposit with a failed banking institution in New Jersey. Public depositories include state or federally chartered banks, savings banks or associations located in or having a branch office in the State of New Jersey, the deposits of which are federally insured.

The market value of the collateral must equal five percent of the average daily balance of public funds; and, if the public funds deposited exceed 75 percent of the capital funds of the depository, the depository must provide collateral having a market value equal to 100 percent of the amount exceeding 75 percent.

All collateral must be deposited with the Federal Reserve Bank, the Federal Home Loan Bank Board or a banking institution that is a member of the Federal Reserve System and has capital funds of not less than \$25,000,000.

**TOWNSHIP OF LAWRENCE
COUNTY OF MERCER, STATE OF NEW JERSEY**

NOTES TO FINANCIAL STATEMENTS

B. CASH AND CASH EQUIVALENTS AND INVESTMENTS (CONTINUED)

As of December 31, 2015, the Township's bank balances of \$35,271,511.07 were exposed to custodial credit risk as follows:

	<u>Bank Balance</u>
Insured and Collateralized	\$ 750,000.00
Uninsured and Uncollateralized	632,765.29
Uninsured and Collateralized	<u>33,888,745.78</u>
Total	<u><u>\$ 35,271,511.07</u></u>

Deposits

Custodial credit risk for deposits is the risk that in the event of a bank failure, the Township's deposits may not be returned or the Township will not be able to recover collateral securities in the possession of an outside party. The Township's policy requires deposits to be secured by collateral valued at market or par, whichever is lower, less the amount covered by the Federal Deposit Insurance Corporation ("FDIC"). The Township Council approves and designates the authorized depository institution based on evaluation of solicited responses and certifications provided by financial institutions.

Concentration of Credit Risk – This is the risk associated with the amount of investments the Township has with any one issuer that exceeds five percent or more of its total investments. Investments issued or explicitly guaranteed by the U.S. government and the New Jersey Cash Management Fund are excluded from this requirement. None of the investments held by the Township are exposed to concentration of credit risk.

Credit Risk – This is the risk that an issuer or other counterparty to an investment will not fulfill its obligations. In general, the Township does not have an investment policy regarding Credit Risk, however, the Township had no investments that were subject to credit risks as of December 31, 2015. The New Jersey Cash Management Fund is not rated.

Interest Rate Risk – This is the risk that changes in interest rates will adversely affect the fair value of an investment. The Township has a formal policy that limits investment maturities as a means of managing its exposure to fair value losses arising from interest rate fluctuations. However, its practice is to hold investments to maturity.

**TOWNSHIP OF LAWRENCE
COUNTY OF MERCER, STATE OF NEW JERSEY**

NOTES TO FINANCIAL STATEMENTS

C. LONG-TERM DEBT

Summary of Municipal Debt

	December 31,		
	2015	2014	2013
Summary of Municipal Debt Issued			
General obligation bonds	\$ 10,765,000.00	\$ 13,300,000.00	\$ 16,055,000.00
Bond anticipation notes	9,625,000.00	9,270,000.00	9,895,000.00
New Jersey Environmental Infrastructure Trust loans			
NJEIT Trust Loan, issued 11/5/98 at 4-4.5% interest	78,415.00	118,415.00	153,415.00
State of NJ Fund Loan, issued 11/5/98 at 0% interest	41,642.53	72,301.49	100,746.28
NJDEP Green Trust loans			
Tiffany Woods, issued 5/9/95 at 2.0% interest	-	9,577.98	28,450.39
Drexel Woods, issued 10/5/98 at 2.0% interest	277,043.07	365,775.67	452,759.89
Total Issued	<u>20,787,100.60</u>	<u>23,136,070.14</u>	<u>26,685,371.56</u>
Municipal Debt Authorized but not Issued	<u>6,993,625.96</u>	<u>7,516,592.96</u>	<u>5,394,391.62</u>
Municipal Debt Issued and Authorized but not Issued	<u>\$ 27,780,726.56</u>	<u>\$ 30,652,663.10</u>	<u>\$ 32,079,763.18</u>

Summary of Statutory Debt Condition - Annual Debt Statement

The summarized statement of debt condition which follows is prepared in accordance with the required method of setting up the annual debt statement and indicates a statutory net debt of 0.554%:

	Gross Debt	Deductions	Net Debt
Local School District Debt	\$ 28,393,000.00	\$ 28,393,000.00	\$ -
Other Bonds and Notes	27,780,726.56	780,781.77	26,999,944.79
	<u>\$ 56,173,726.56</u>	<u>\$ 29,173,781.77</u>	<u>\$ 26,999,944.79</u>

Borrowing Power under N.J.S.A. 40A:2-6 as Amended

3 1/2% of equalized valuation basis (municipal)	\$ 170,446,269.42
Net debt	26,999,944.70
Remaining borrowing power	<u>\$ 143,446,324.72</u>

**TOWNSHIP OF LAWRENCE
COUNTY OF MERCER, STATE OF NEW JERSEY**

NOTES TO FINANCIAL STATEMENTS

C. LONG-TERM DEBT (CONTINUED)

Summary of Statutory Debt Condition - Annual Debt Statement

Net debt of \$26,999,944.79 divided by average equalized valuation basis per N.J.S.A. 40A:2-2 as amended of \$4,869,893,412 equals 0.554%. This information is in agreement with the Annual Debt Statement filed by the Chief Financial Officer.

The following is a schedule of annual debt service for principal and interest on general bonded debt (excluding bond anticipation notes), infrastructure trust loans and green trust loans issued and outstanding to maturity:

Year	Principal	Interest	Total
2016	\$ 2,615,011.44	\$ 271,290.53	\$ 2,886,301.97
2017	2,577,897.72	211,196.16	2,789,093.88
2018	2,514,191.44	150,140.21	2,664,331.65
2019	2,400,000.00	89,300.00	2,489,300.00
2020	530,000.00	48,775.00	578,775.00
2021	525,000.00	26,250.00	551,250.00
	\$ 11,162,100.60	\$ 796,951.90	\$ 11,959,052.50

Green Trust Program Loans

The Township has contracted with the State of New Jersey, Department of Environmental Protection for Green Trust Program Loans to fund a portion of the costs incurred in the construction of Village Park, Tiffany Woods and Drexel Woods.

New Jersey Environmental Infrastructure Trust Loan

The Township has contracted with the State of New Jersey, Department of Transportation to fund a portion of the costs incurred in various eligible projects.

D. BOND ANTICIPATION NOTES

The Township issues bond anticipation notes to temporarily finance various capital projects prior to the issuance of serial bonds. The terms of the notes cannot exceed one year, but the notes may be renewed from time to time for a period not exceeding one year. All such notes must be paid not later than the tenth anniversary of the original note. The State of New Jersey also prescribes that, on or before the third anniversary of the date of the original note, a payment of at least equal to the first legally payable installment of the bonds, in anticipation of which such notes were issued, be paid or retired. A second legal installment must be paid if the notes are to be renewed beyond the fourth anniversary of the date of the original issue. At December 31, 2015, the Township had bond anticipation notes totaling \$9,625,000.00.

**TOWNSHIP OF LAWRENCE
COUNTY OF MERCER, STATE OF NEW JERSEY**

NOTES TO FINANCIAL STATEMENTS

E. BALANCE APPROPRIATED - CURRENT FUND

Current fund balances were appropriated and included as anticipated revenue in the succeeding year's budget for the past five years as follows:

<u>Year</u>	<u>Balance</u>	<u>Utilized in Budget of Succeeding Year</u>
December 31, 2015	\$ 9,299,933.70	\$ 4,350,000.00
December 31, 2014	8,370,670.73	3,750,000.00
December 31, 2013	5,053,879.63	3,450,000.00
December 31, 2012	4,189,579.09	3,350,000.00
December 31, 2011	5,020,586.99	4,440,000.00

F. PROPERTY TAXES

Assessment of Tax

New Jersey statutes require that taxable valuation of real property be prepared by the Township Tax Assessor as of October 1 in each year and filed with the County Board of Taxation by January 10 of the following year. Upon the filing of certified adopted budgets by the Township, the Lawrence Township School District and Mercer County, the tax rate is struck by the board based on the certified amounts in each of the taxing districts. Pursuant to statute, this process is to be completed on or before May 3, with a completed duplicate of the tax rolls to be delivered to the Township Tax Collector on or before May 13.

Collection of Tax

Pursuant to statute, taxes for municipalities operating under the calendar fiscal year shall be payable as follows: the first installment on February 1, the second installment on May 1, the third installment on August 1, and the fourth installment on November 1, after which dates, if unpaid, a ten-day grace period is given, after which taxes shall become delinquent and remain delinquent until such time as all unpaid taxes, including taxes and other liens subsequently due and unpaid together with interest thereon, have been fully paid and satisfied. The tax bills are prepared and mailed by the Collector of Taxes of the Township annually in July.

The tax bills for each of the first two installments are based upon one-quarter of the total tax levied against the respective properties for the preceding year. The amount of the tax bill for third and fourth installments is the full tax as levied for the current year, less the amount charged as the first and second installments with the amount divided equally between the last two installments.

Taxes become delinquent if not paid on the installment dates or within the ten-day grace period and become subject to interest penalties of 8% to 18% of the amount delinquent. If taxes are delinquent 60 days before the date of the tax sale of the succeeding year, the delinquent amount is subject to "Tax Sale," which places a tax lien on the property allowing the holder to enforce the tax lien by collection or foreclosure. New Jersey property tax laws establish a tax lien on real estate as of January 1 of the current tax year even though the amount due is not known.

**TOWNSHIP OF LAWRENCE
COUNTY OF MERCER, STATE OF NEW JERSEY**

NOTES TO FINANCIAL STATEMENTS

G. PENSION AND RETIREMENT PLANS

A substantial number of the Township's employees participate in the following defined benefit pension plans: PERS and Police and Firemen's Retirement System ("PFRS"), which are administered and/or regulated by the New Jersey Division of Pensions and Benefits. Both plans has a board of trustees that is primarily responsible for its administration. The division issues a publicly available financial report that includes financial statements and required supplementary information. That report may be obtained by writing to:

State of New Jersey
Division of Pensions and Benefits
P.O. Box 295
Trenton, New Jersey 08625-0295

Plan Description

PERS is a cost-sharing multiple-employer defined benefit pension plan which was established as of January 1, 1955. For additional information about PERS, please refer to division's Comprehensive Annual Financial Report ("CAFR") which can be found at www.state.nj.us/treasury/pensions/annrpts.shtml

PFRS is a cost-sharing multiple-employer defined benefit pension plan administered by the State of New Jersey, Division of Pension and Benefits. For additional information about PFRS, please refer to division's CAFR which can be found at link above.

The Defined Contribution Retirement Program ("DCRP") is a multiple-employer defined contribution pension fund established on July 1, 2007, under the provisions of Chapter 92, P.L. 2007, and Chapter 103, P.L. 2007 (N.J.S.A. 43:15C-1 et. seq.). The DCRP is a tax-qualified defined contribution money purchase pension plan under Internal Revenue Code ("IRC") 401(a) et seq., and is a governmental plan within the meaning of IRC 414(d). The DCRP provides retirement benefits for eligible employees and their beneficiaries. Individuals covered under DCRP are employees enrolled in PERS on or after July 1, 2007, who earn salary in excess of established "maximum compensation" limits; employees enrolled in PFRS after May 21, 2010, who earn salary in excess of established "maximum compensation" limits; employees otherwise eligible to enroll in PERS on or after November 2, 2008, who do not earn the minimum annual salary for tier 3 enrollment but who earn salary of at least \$5,000.00 annually; and employees otherwise eligible to enroll in PERS after May 21, 2010, who do not work the minimum number of hours per week required for tiers 4 or 5 enrollment, but who earn salary of at least \$5,000.00 annually.

Benefits Provided

For PERS, vesting and benefit provisions are set by N.J.S.A. 43:15A. PERS provides retirement, death and disability benefits. All benefits vest after ten years of service, except for medical benefits, which vest after 25 years of service or under the disability provisions of PERS.

**TOWNSHIP OF LAWRENCE
COUNTY OF MERCER, STATE OF NEW JERSEY**

NOTES TO FINANCIAL STATEMENTS

G. PENSION AND RETIREMENT PLANS (CONTINUED)

The following represents the membership tiers for PERS:

Tier	Definition
1	Members who were enrolled prior to July 1, 2007.
2	Members who were eligible to enroll on or after July 1, 2007 and prior to November 2, 2008.
3	Members who were eligible to enroll on or after November 2, 2008 and prior to May 22, 2010.
4	Members who were eligible to enroll on or after May 22, 2010 and prior to June 28, 2011.
5	Members who were eligible to enroll on or after June 28, 2011.

Service retirement benefits of 1/55th of final average salary for each year of service credit is available to tiers 1 and 2 members upon reaching age 60 and to tier 3 members upon reaching age 62. Service retirements benefits of 1/60th of final average salary for each year of service credit is available to tier 4 members upon reaching age 62 and tier 5 members upon reaching age 65. Early retirement benefits are available to tiers 1 and 2 members before reaching age 60, tiers 3 and 4 before age 62 with 25 or more years of service credit and tier 5 with 30 or more years of service credit before age 65. Benefits are reduced by a fraction of a percent for each month that a member retires prior to the age at which a member can receive full early retirement benefits in accordance with their respective tier. Tier 1 members can receive an unreduced benefit from age 55 to age 60 if they have at least 25 years of service. Deferred retirement is available to members who have at least 10 years of service credit and have not reached the service retirement age for the respective tier.

For PFRS, vesting and benefit provisions are set by N.J.S.A. 43:16A. PFRS provides retirement as well as death and disability benefits. All benefits vest after ten years of service, except for disability benefits which vest after four years of service.

The following represents the membership tiers for PFRS:

Tier	Definition
1	Members who were enrolled prior to May 22, 2010.
2	Members who were eligible to enroll on or after May 22, 2010 and prior to June 28, 2011.
3	Members who were eligible to enroll on or after June 28, 2011.

Service retirement benefits are available at age 55 and are generally determined to be 2% of final compensation of each year of creditable service, as defined, up to 20 years plus 1% for each year of service in excess of 30 years. Members may seek special retirement after achieving 25 years of creditable service, in which benefits would equal 65% (tiers 1 and 2 members) and 50% (tier 3 members) of final compensation plus 1% for each year of creditable service over 25 years but not to exceed 30 years. Members may elect deferred retirement benefits after achieving 10 years of service, in which case benefits would begin at age 55 equal to 2% of final compensation for each year of service.

For DCRP, eligible members are provided with a defined contribution retirement plan intended to qualify for favorable federal income tax treatment under IRC Section 401(a), a noncontributory group life insurance plan and a noncontributory group disability benefit plan. A participant's interest in that portion of his or her defined contribution retirement plan account attributable to employee contributions shall immediately become and shall at all times remain fully vested and non-forfeitable. A participant's interest in that portion of his or her defined contribution retirement plan account attributable to employer contributions shall be vested and non-forfeitable on the date the participant commences the second year of employment or upon his or her attainment of age 65, while employed by an employer, whichever occurs first.

**TOWNSHIP OF LAWRENCE
COUNTY OF MERCER, STATE OF NEW JERSEY**

NOTES TO FINANCIAL STATEMENTS

G. PENSION AND RETIREMENT PLANS (CONTINUED)

Contributions

The contribution requirements of PERS plan members are determined by State statute. In accordance with Chapter 62, P.L. 1994, plan members enrolled in the PERS were required to contribute 5.00% of their annual covered salary. Effective July 1, 2008, however, in accordance with Chapter 92, P.L. 2007 and Chapter 103, P.L. 2007, plan members are required to contribute 5.50% of their annual covered salary. For employees enrolled in the retirement system prior to July 1, 2008, the increase is effective with the payroll period that begins immediately after July 1, 2008. Pursuant to the provisions of Chapter 78, P.L. 2011, the active member contribution rate increased to 6.5% plus an additional 1.00% phased-in over seven years. The phase-in of the additional incremental member contribution amount began July 1, 2012, and increases each subsequent July 1. The active member effective contribution rates were July 1, 2014, 6.92%, July 1, 2013, 6.78%, and July 1, 2012, 6.64%. The State Treasurer has the right under the current law to make temporary reductions in member rates based on the existence of surplus pension assets in the retirement system; however, the statute also requires the return to the normal rate when such surplus pension assets no longer exist.

The contribution policy for PFRS is set by N.J.S.A 43:16A and requires contributions by active members and contributing employers. State legislation has modified the amount that is contributed by the State. The State's contribution is based on an actuarially determined rate which includes the normal cost and unfunded accrued liability. For fiscal year 2015, the State contributed an amount less than the actuarially determined amount. The Local employers' contribution amounts are based on an actuarially determined rate which includes the normal cost and unfunded accrued liability. Chapter 19, P.L. 2009 provided an option for local employers of PFRS to contribute 50% of the normal and accrued liability contribution amounts certified for payments due in State fiscal year 2009. Such employers will be credited with the full payment and any such amounts will not be included in their unfunded liability. The actuaries will determine the unfunded liability of those retirement systems, by employer, for the reduced normal and accrued liability contributions provided under this law. This unfunded liability will be paid by the employer in level annual payments over a period of 15 years beginning with the payments due in the fiscal year ended June 30, 2012, and will be adjusted by the rate of return on the actuarial value of assets.

The Township is billed annually for its normal contribution plus any accrued liability. Contribution to PERS from the Township was \$702,330.00 for the year ended June 30, 2015. Contribution to PFRS from the Township was \$1,557,811.00 for the year ended June 30, 2015.

DCRP – the contribution policy is set by N.J.S.A. 43:15C-3 and requires contributions by active members and contributing employers. In accordance with Chapter 92, P.L. 2007 and Chapter 103, P.L. 2007, plan members are required to contribute 5.5% of their annual covered salary. In addition to the employee contributions, the Township contributes 3% of the employees' base salary, for each pay period, to Prudential Financial not later than the fifth business day after the date on which the employee is paid for that pay period. For the year ended June 30, 2015, employee contributions totaled \$11,452.42 and the Township's contributions were \$6,247.21. There were no forfeitures during the year.

**TOWNSHIP OF LAWRENCE
COUNTY OF MERCER, STATE OF NEW JERSEY**

NOTES TO FINANCIAL STATEMENTS

G. PENSION AND RETIREMENT PLANS (CONTINUED)

Pension Liabilities, Pension Expense, and Deferred Outflows or Resources and Deferred Inflows of Resources Related to Pensions

At June 30, 2015, the Township had a liability of \$18,588,875.00 for its proportionate share of the net pension liability in PERS and \$30,572,833.00 for its proportionate share of the net pension liability in PFRS. The net pension liability was measured as of June 30, 2015, and the total pension liability used to calculate the net pension liability was determined by an actuarial valuation as of that date. The Township's proportion of the net pension liability was based on a projection of the Township's long-term share of contributions to the pension plan relative to the projected contributions of all participating members of the plan, actuarial determined. At June 30, 2015, the Township's proportion was .0828086150%, which was a decrease of .002 from its proportion measured as of June 30, 2014, for PERS and .1835488037%, which was a decrease of .019 from its proportion measured as of June 30, 2014, for PFRS.

	PERS		PFRS	
	Deferred Outflows of Resources	Deferred Inflows of Resources	Deferred Outflows of Resources	Deferred Inflows of Resources
Differences between expected and actual experience	\$ -	\$ -	\$ -	\$ 263,700.00
Changes in assumptions	1,996,297.00	-	5,644,504.00	-
Net difference between projected and actual investment earnings on pension plan investments	-	298,873.00	-	532,093.00
Changes in proportion	-	1,374,041.00	-	3,987,624.00
Township contributions subsequent to the measurement date	711,932.00	-	1,491,978.00	-
	<u>\$ 2,708,229.00</u>	<u>\$ 1,672,914.00</u>	<u>\$ 7,136,482.00</u>	<u>\$ 4,783,417.00</u>

The \$711,932.00 and \$1,491,978.00 for PERS and PFRS, respectively, are reported as deferred outflows of resources related to pensions resulting from Township contributions subsequent to the measurement date will be recognized as a reduction of the net pension liability in the year ended June 30, 2015. Other amounts reported as deferred outflows or resources and deferred inflows of resources related to pensions will be recognized in pension expense as follows:

	PERS	PFRS
2016	\$ 389,749.51	\$ 920,858.52
2017	389,749.51	920,858.52
2018	389,749.51	920,858.52
2019	620,738.61	1,509,890.54
2020	350,901.42	576,244.60
	<u>\$ 2,140,888.56</u>	<u>\$ 4,848,710.71</u>

**TOWNSHIP OF LAWRENCE
COUNTY OF MERCER, STATE OF NEW JERSEY**

NOTES TO FINANCIAL STATEMENTS

G. PENSION AND RETIREMENT PLANS (CONTINUED)

Actuarial Assumptions

The total pension liability in the June 30, 2015, actuarial valuation was determined using the following actuarial assumptions, applied to all periods included in the measurement:

	<u>PERS</u>	<u>PFRS</u>
Inflation	3.04%	3.04%
Salary Increases: 2012-2021 (based on age)	2.15 - 4.40%	2.60 - 9.48%
Salary Increases: Thereafter (based on age)	3.15 - 5.40%	3.60 - 10.48%
Investment rate of return	7.90%	7.90%

For PERS, mortality rates were based on the RP-2000 Combined Healthy Male and Female Mortality Tables (setback 1 year for males and females) for service retirement and beneficiaries of former members with adjustments for mortality improvements from the base year 2012 based on Projection Scale AA. The RP-2000 Disabled Mortality Tables (setback 3 years for males and setback 1 year for females) are used to value disabled retirees. The actuarial assumptions used in the July 1, 2014, valuation were based on the results of an actuarial experience study for the period July 1, 2008 to June 30, 2011.

For PFRS, mortality rates were based on the RP-2000 Combined Healthy Mortality Tables projected one year using Projection Scale AA and one year using Projection Scale BB for male service retirements with adjustments for mortality improvements from the base year based on Projection Sale BB. Mortality rates were based on the RP-2000 Combined Healthy Mortality Tables projected fourteen years using Projection Scale BB for female service retirements and beneficiaries with adjustments for mortality improvements from the base year of 2014 based on Projection Scale BB. The actuarial assumptions used in the July 1, 2014, valuation were based on the results of an actuarial experience study for the period July 1, 2010 to June 30, 2013.

In accordance with State statute, the long term expected rate of return on plan investments (7.09% at June 30, 2015) is determined by the State Treasurer, after consultation with the Directors of the Division of Investments and Division of Pension and Benefits, the board of trustees and the actuaries. The long-term expected rate of return was determined using a building block method in which best-estimate ranges of expected future real rate of return (expected returns, net of pension plan investment expense and inflation) are developed for each major asset class. These ranges are combined to produce the long-term expected rate of return by weighting the expected future real rates of return by the target asset allocation percentage and by adding expected inflation. Best estimates of arithmetic real rates of return for each major asset class included in PERS's and PFRS's target asset allocation as of June 30, 2015, are summarized in the following table:

**TOWNSHIP OF LAWRENCE
COUNTY OF MERCER, STATE OF NEW JERSEY**

NOTES TO FINANCIAL STATEMENTS

G. PENSION AND RETIREMENT PLANS (CONTINUED)

Asset Class	Target Allocation	Long-Term Expected Real Rate of Return
Cash	5.00%	1.04%
U.S. Treasuries	1.75%	1.64%
Investment Grade Credit	10.00%	1.79%
Mortgages	2.10%	1.62%
High Yield Bonds	2.00%	4.03%
Inflation-Indexed Bonds	1.50%	3.25%
Broad US Equities	27.25%	8.52%
Developed Foreign Equities	12.00%	6.88%
Emerging Market Equities	6.40%	10.00%
Private Equity	9.25%	12.41%
Hedge Funds/Absolute Return	12.00%	4.72%
Real Estate (Property)	2.00%	6.83%
Commodities	1.00%	5.32%
Global Debt ex US	3.50%	-0.40%
REIT	4.25%	5.12%

PERS

The discount rate used to measure the total pension liability was 4.90% as of June 30, 2015. The single blended discount rate was based on the long-term expected rate of return on pension plan investments of 7.90%, and a municipal bond rate of 3.80% as of June 30, 2015, based on the Bond Buyer Go 20-Bond Municipal Bond Index which includes tax-exempt general obligation municipal bonds with an average rating of AA/Aa or higher. The projection of cash flows used to determine the discount rate assumed that contributions from plan members will be made at the current member contribution rates and that contributions from employers will be made based on the average of the last five years of contributions made in relation to the last five years of actuarially determined contributions. Based on those assumptions, the plan's fiduciary net position was projected to be available to make projected future benefit payments of current plan members through 2033. Therefore, the long-term expected rate of return on plan investments was applied to projected benefit payments through 2033, and the municipal bond rate was applied to projected benefit payments after that date in determining the total pension liability.

PFRS

The discount rate used to measure the total pension liability was 5.79% as of June 30, 2015. The single blended discount rate was based on the long-term expected rate of return on pension plan investments of 7.90%, and a municipal bond rate of 3.80% as of June 30, 2015, based on the Bond Buyer Go 20-Bond Municipal Bond Index which includes tax-exempt general obligation municipal bonds with an average rating of AA/Aa or higher. The projection of cash flows used to determine the discount rate assumed that contributions from plan members will be made at the current member contribution rates and that contributions from employers and the non-employer contributing entity will be made based on the average of the last five years of contributions. Based on those assumptions, the plan's fiduciary net position was projected to be available to make projected future benefit payments of current plan members through 2045. Therefore, the long-term expected rate of return on plan investments was applied to projected benefit payments through 2045, and the municipal bond rate was applied to projected benefit payments after that date in determining the total pension liability.

**TOWNSHIP OF LAWRENCE
COUNTY OF MERCER, STATE OF NEW JERSEY**

NOTES TO FINANCIAL STATEMENTS

G. PENSION AND RETIREMENT PLANS (CONTINUED)

Schedule of Required Supplementary Information
Schedule of Township's Proportionate Share of Net Pension Liability

PERS - Last 10 Fiscal Years

	2015	2014	2013
Township's proportion of the net pension liability	0.0828086150%	0.0851943580%	0.0927462433%
Township's proportionate share of net pension liability	\$ 18,588,875.00	\$ 15,950,714.00	\$ 17,725,650.00
Township's covered-employee payroll	5,452,029.00	5,518,189.00	5,497,316.00
Township's proportionate share of net pension liability as a % of payroll	340.95%	289.06%	322.44%
Total pension liability	35,698,446.16	33,286,688.53	34,568,653.55
Plan fiduciary net position	17,109,571.48	17,335,974.64	16,843,003.67
Plan fiduciary net position as a % of total pension liability	47.93%	52.08%	48.72%

PFRS Plan - Last 10 Fiscal Years

	2015	2014	2013
Township's proportion of the net pension liability	0.1835488037%	0.2028217340%	0.2236743115%
Township's proportionate share of net pension liability	\$ 30,572,833.00	\$ 25,513,093.00	\$ 29,735,481.00
Township's covered-employee payroll	7,695,106.00	7,683,677.00	8,102,214.00
Township's proportionate share of net pension liability as a % of payroll	397.30%	332.04%	367.00%
Total pension liability	76,107,529.19	75,178,292.15	78,700,695.06
Plan fiduciary net position	42,853,561.78	46,917,867.90	46,193,505.67
Plan fiduciary net position as a % of total pension liability	56.31%	62.41%	58.70%

Schedule of Township's Contributions
PERS - Last 10 Fiscal Years

	2015	2014	2013
Contractually required contribution	\$ 711,932.00	\$ 702,330.00	\$ 698,824.00
Contributions in relation to the contractually required contribution	702,330.00	699,596.00	717,536.00
Township's covered employee payroll	5,452,029.00	5,518,189.00	5,497,316.00
Contributions as a % of covered employee payroll	12.88%	12.68%	13.05%

PFRS - Last 10 Fiscal Years

	2015	2014	2013
Contractually required contribution	\$ 1,491,978.00	\$ 1,557,811.00	\$ 1,631,878.00
Contributions in relation to the contractually required contribution	1,557,811.00	1,694,438.00	1,747,162.00
Township's covered employee payroll	7,695,106.00	7,683,677.00	8,102,214.00
Contributions as a % of covered employee payroll	20.24%	22.05%	21.56%

In 2001, voters approved a Length-of-Service Awards Program ("LOSAP") for volunteer fire and first aid personnel who meet certain eligibility requirements. The Township's contribution to LOSAP in 2014 amounted to \$33,000.00.

**TOWNSHIP OF LAWRENCE
COUNTY OF MERCER, STATE OF NEW JERSEY**

NOTES TO FINANCIAL STATEMENTS

H. SELF-INSURANCE FUND

Effective January 1, 1999, the Township maintains a self-insurance plan for worker's compensation insurance, legal liability, general liability, automobile liability and garage liability which is administered by an outside claims service bureau. Effective January 1, 2013, the Township joined the Garden State Municipal Joint Insurance fund for the procuring of coverage.

The following information was obtained from the claims service bureau:

	Estimated Reserve Requirements for Open Cases	
	December 31, 2015	December 31, 2014
Worker's Compensation	\$ 95,635.79	\$ 145,349.38
General Liability	14,117.54	14,117.54
Police Professional	30,000.00	35,500.00
Auto Liability	73,229.29	73,229.29
Total Estimated Reserve Requirement	<u>\$ 212,982.62</u>	<u>\$ 268,196.21</u>
Cash Reserves*	<u>\$ 1,737,855.68</u>	<u>\$ 1,662,038.23</u>

* Includes amounts charged to operating budgets.

The Township also maintains specific and aggregate excess insurance coverage to limit its self-insured risk retention.

I. PENDING LITIGATION

The Township is a defendant in various matters under litigation. In the opinion of the Township's management, these matters will not have a material adverse effect on the financial position of the Township in the event of unfavorable or adverse outcomes.

J. UNUSED SICK LEAVE AND VACATION BENEFITS

The Township has permitted employees to accrue sick leave pay which may be taken as time off or paid at a later date. Non-union employees are entitled to a lump sum payment equal to 50% of unused accumulated sick leave at current rates, subject to a cap of \$15,000. Union employees receive a similar payment, subject to a cap of \$15,000. Union employees, not including police, hired after January 1, 2010, are subject to a cap of \$10,000. Fraternal Order of Police is subject to a cap of \$22,000, except for officers hired after January 1, 2013, who are subject to a cap of \$15,000 or the amount established by New Jersey Law whichever is less. Each year a provision is made in the budget to cover the estimated annual cost of such payments.

The Township's policy with respect to unused vacation is to permit employees to carry over such vacation for one year unless approved otherwise by the Township Manager.

The total balance of unused sick and vacation time benefits amounted to approximately \$2,758,042.00 at December 31, 2015. This total is not intended to represent amounts that will ultimately be paid to employees upon termination or retirement, as no adjustment has been made to reflect the limitations on lump sum payments. Such amounts are not included in accrued liabilities at December 31, 2015.

**TOWNSHIP OF LAWRENCE
COUNTY OF MERCER, STATE OF NEW JERSEY**

NOTES TO FINANCIAL STATEMENTS

J. UNUSED SICK LEAVE AND VACATION BENEFITS (CONTINUED)

At December 31, 2015, the Township had established a balance of \$191,315.32 as a cash reserve in the trust fund which is available for future payments of compensated absences.

K. COMMITMENTS

The majority of the Township employees are represented through the following collective bargaining units:

<u>Bargaining Unit</u>
Fraternal Order of Police, Lodge 209 - 12/31/2018
Communication Workers of America, Local 1032 - 12/31/2017
American Federation of State, County and Municipal Employees Council 73, AFL-CIO, Local 2476 - 12/31/2016
American Federation of State, County and Municipal Employees, Council 73, AFL-CIO, Local 2257 - 12/31/2016
Firefighters Mutual Benevolent Association, Local 96 - 12/31/2016
Firefighters Mutual Benevolent Association, Local 396 (EMTs) - 12/31/2015*

*Currently in negotiation.

L. OTHER POST EMPLOYMENT BENEFITS (“OPEB”) OTHER THAN PENSIONS

Plan Description

The Township contributes to the State Health Benefits Program (“SHBP”), a cost-sharing, multiple-employer defined benefit post-employment healthcare plan administered by the State of New Jersey, Division of Pensions and Benefits. SHBP was established in 1961 under N.J.S.A. 52:14-17.25 et seq., to provide health benefits to State employees, retirees and their dependents. Rules governing the operation and administration of the program are found in Title 17, Chapter 9 of the New Jersey Administrative Code. SHBP provides medical, prescription drugs, mental health/substance abuse, and Medicare Part B reimbursement to retirees and their covered dependents.

The SHBP was extended to employees, retirees and dependents of participating local public employers in 1964. Local employers must adopt a resolution to participate in the SHBP. In 2000, the Township authorized participation in the SHBP’s post-retirement benefit program through resolution number 146-00. The Township adopted the PERS requirement of providing continued health care benefits to employees retiring after twenty-five years of service. Postretirement health benefits are limited by years of services and age at retirement. The maximum period of coverage is ten years for civilians and fifteen years for police officers. Members of AFSCME, CWA and non-union employees hired on or after January 1, 2010, are not eligible for post-retirement benefits. Police officers hired after June 28, 2011, receive a maximum of ten years medical coverage upon retirement. Township eligible employees receive the SHBP benefits as noted in paragraph one.

**TOWNSHIP OF LAWRENCE
COUNTY OF MERCER, STATE OF NEW JERSEY**

NOTES TO FINANCIAL STATEMENTS

L. OTHER POST EMPLOYMENT BENEFITS (“OPEB”) OTHER THAN PENSIONS (CONTINUED)

The State Health Benefits Commission is the executive body established by statute to be responsible for the operation of the SHBP. The State of New Jersey, Division of Pensions and Benefits issues a publicly available financial report that includes financial statements and required supplementary information for the SHBP. That report may be obtained by writing to: State of New Jersey Division of Pensions and Benefits, P.O. Box 295, Trenton, NJ 08625-0295 or by visiting their website at www.state.nj.us/treasury/pensions/gasb-43-sept2008.pdf

Funding Policy

Participating employers are contractually required to contribute based on the amount of premiums attributable to their retirees. Post-retirement medical benefits under the plan have been funded on a pay-as-you-go basis since 1994. Prior to 1994, medical benefits were funded on an actuarial basis.

Contributions to pay for the health premiums of participating retirees in the SHBP are billed to the Township on a monthly basis. Contributions, funding and the cost sharing policy, and the manner of administration are determined by the State.

The Township contributions to SHBP for retirees for the years ended December 31, 2015, 2014 and 2013, were \$1,337,242.38, \$1,257,305.46 and \$1,060,510.898, respectively, which equaled the required contributions for each year. There were approximately 52, 52 and 52 retired participants eligible at December 31, 2015, 2014 and 2013, respectively.

M. DEFERRED CHARGES TO BE RAISED IN SUCCEEDING BUDGETS

Certain expenditures are required to be deferred to budgets of succeeding years. At December 31, 2015, the following deferred charges are shown on the statement of assets, liabilities, reserves and fund balance of the current fund:

	Balance December 31, 2015	2016 Budget Appropriation	Balance to Succeeding Budgets
Special Emergency	\$ 320,000.00	\$ 160,000.00	\$ 160,000.00
Total	<u>\$ 320,000.00</u>	<u>\$ 160,000.00</u>	<u>\$ 160,000.00</u>

N. SUBSEQUENT EVENTS

Management has evaluated subsequent events that occurred after the statement of assets, liabilities, reserves and fund balance date but before June 29, 2016, the date the financial statements were available to be issued. No issues were noted by management that required disclosure.

SUPPLEMENTAL SCHEDULES

**TOWNSHIP OF LAWRENCE
COUNTY OF MERCER, STATE OF NEW JERSEY**

A

**CURRENT FUND
STATEMENT OF ASSETS, LIABILITIES, RESERVES AND FUND BALANCE**

ASSETS	Reference	December 31,	
		2015	2014
Current Fund:			
Cash and Cash Equivalents		\$ 16,936,891.58	\$ 15,346,390.90
Cash-Change Funds		1,205.00	1,005.00
Due from State of New Jersey per Chapter 73, P.L. 1976	A-12	61,467.82	68,217.82
		<u>16,999,564.40</u>	<u>15,415,613.72</u>
Receivables and Other Assets with Full Reserves:			
Delinquent Property Taxes Receivable	A-3	1,215,079.37	1,161,309.61
Delinquent Sewer Fees Receivable	A-7	310,430.00	346,410.47
Due from Payroll		48,119.87	143,221.23
Revenue Accounts Receivable		49,575.82	37,007.78
		<u>1,623,205.06</u>	<u>1,687,949.09</u>
Liens Receivable			
Sewer Liens Receivable	A-8	8,371.09	8,889.56
Tax Title Liens Receivable	A-4	1,465,114.15	1,447,637.81
		<u>1,473,485.24</u>	<u>1,456,527.37</u>
Property Acquired for Taxes, Assessed Valuation	A-5	168,410.00	168,410.00
Deferred Charges			
Special Emergency	A-13	320,000.00	480,000.00
Sub-total Current Fund		<u>20,584,664.70</u>	<u>19,208,500.18</u>
Federal and State Grant Fund			
Cash and Cash Equivalents		1,313,625.95	1,873,418.38
Federal and State Grant Fund Receivable	A-9	532,952.06	284,178.07
Sub-total Grant Fund		<u>1,846,578.01</u>	<u>2,157,596.45</u>
Total		<u>\$ 22,431,242.71</u>	<u>\$ 21,366,096.63</u>

**TOWNSHIP OF LAWRENCE
COUNTY OF MERCER, STATE OF NEW JERSEY**

A

**CURRENT FUND
STATEMENT OF ASSETS, LIABILITIES AND FUND BALANCE (CONTINUED)**

LIABILITIES, RESERVES AND FUND BALANCES	Reference	December 31,	
		2015	2014
Appropriation Reserves		\$ 2,209,194.82	\$ 2,141,351.02
Other Liabilities and Reserves:			
Reserve for Encumbrances		610,964.38	681,898.92
Prepaid Taxes		648,491.05	668,005.82
Tax Overpayments		437,332.05	642,474.02
Sewer Charge Overpayments		26,295.81	19,614.53
County Taxes Payable		232,850.03	37,999.38
Due County for Added Taxes		103,318.67	194,850.60
Due to State of New Jersey - various fees		12,051.84	28,553.84
Municipal Open Space Tax		4,038.88	8,069.16
Special Emergency Notes Payable		320,000.00	480,000.00
Accounts Payable		148,988.09	187,183.93
Reserve for Proceeds from Sale of Municipal Assets		916,391.00	16,391.00
Reserve for State Tax Appeals Pending		2,274,764.94	2,337,849.66
Reserve Revaluation Program		74,949.14	74,949.14
Reserve Tax Exempt Contributions		-	0.97
Reserve for Legislative Block Grant		-	5,751.00
		<u>5,810,435.88</u>	<u>5,383,591.97</u>
Reserves for Receivables		<u>3,265,100.30</u>	<u>3,312,886.46</u>
Fund Balance		<u>9,299,933.70</u>	<u>8,370,670.73</u>
Sub-total Current Fund		<u>20,584,664.70</u>	<u>19,208,500.18</u>
Federal and State Grant Fund			
Reserve for Encumbrances		332,187.13	422,692.28
Reserve for State and Federal Grants			
Appropriated	A-10	1,500,752.96	1,616,621.98
Unappropriated	A-11	13,637.92	118,282.19
Sub-total Grant Fund		<u>1,846,578.01</u>	<u>2,157,596.45</u>
Total		<u>\$ 22,431,242.71</u>	<u>\$ 21,366,096.63</u>

**TOWNSHIP OF LAWRENCE
COUNTY OF MERCER, STATE OF NEW JERSEY**

A-1

**CURRENT FUND
STATEMENT OF REVENUES AND OTHER CREDITS TO INCOME
Year Ended December 31, 2015**

	Anticipated Budget	NJSA 40A:4-87	Budget As Modified	Realized	Excess or (Deficit)
Surplus Anticipated	\$ 3,750,000.00	\$ -	\$ 3,750,000.00	\$ 3,750,000.00	\$ -
Total Surplus Anticipated	3,750,000.00	-	3,750,000.00	3,750,000.00	-
MISCELLANEOUS REVENUES					
Licenses:					
Alcoholic Beverages	43,000.00	-	43,000.00	53,100.00	10,100.00
Other	77,000.00	-	77,000.00	80,918.50	3,918.50
Fees and Permits	243,000.00	-	243,000.00	287,927.95	44,927.95
Fines and Costs:					
Municipal Court	527,000.00	-	527,000.00	676,455.87	149,455.87
Interest and Costs on Taxes	320,000.00	-	320,000.00	378,466.19	58,466.19
Interest on Investments	18,000.00	-	18,000.00	12,077.67	(5,922.33)
Revenue from Sewer Charges	5,553,000.00	-	5,553,000.00	5,581,298.32	28,298.32
Payments in Lieu - Non-Profit Housing	282,000.00	-	282,000.00	397,220.35	115,220.35
Recreation Program Fees	290,000.00	-	290,000.00	254,996.21	(35,003.79)
CATV Franchise Fees	269,000.00	-	269,000.00	427,709.25	158,709.25
Total Miscellaneous Revenues	7,622,000.00	-	7,622,000.00	8,150,170.31	528,170.31
STATE AID WITHOUT OFFSETTING APPROPRIATIONS					
Energy Receipts Tax	3,976,814.00	-	3,976,814.00	3,976,814.00	-
Garden State Trust Fund	11,502.00	-	11,502.00	11,502.00	-
Total State Aid Without Offsetting Appropriation	3,988,316.00	-	3,988,316.00	3,988,316.00	-
DEDICATED UCC FEES OFFSET WITH APPROPRIATIONS					
Uniform Construction Code Fees	1,205,000.00	-	1,205,000.00	1,797,636.00	592,636.00
Total Dedicated UCC Fees Offset With Appropriations	1,205,000.00	-	1,205,000.00	1,797,636.00	592,636.00
SPECIAL ITEMS OF REVENUE OFFSET -- ANTICIPATED WITH PRIOR WRITTEN CONSENT					
Ambulance Service Fees	855,000.00	-	855,000.00	744,225.44	(110,774.56)
SPECIAL ITEMS OF REVENUE OFFSET WITH APPROPRIATIONS					
List all Chapter 159s -- From Grants	257,990.19	368,573.61	626,563.80	626,563.80	-
Total Special Items of Revenue offset with Appropriations	257,990.19	368,573.61	626,563.80	626,563.80	-
SPECIAL ITEMS OF REVENUE WITH PRIOR CONSENT OF THE DIRECTOR					
Uniform Fire Safety Act	150,000.00	-	150,000.00	181,219.26	31,219.26
Hotel Tax	130,000.00	-	130,000.00	191,781.29	61,781.29
Quakerbridge Mall Police	141,000.00	-	141,000.00	169,538.92	28,538.92
Capital Surplus	60,000.00	-	60,000.00	60,000.00	-
Rider University Contribution	30,000.00	-	30,000.00	-	(30,000.00)
Reserve for Sidewalks	15,000.00	-	15,000.00	15,000.00	-
Total Special Items of Revenue	526,000.00	-	526,000.00	617,539.47	91,539.47
Sub-total General Revenues	14,454,306.19	368,573.61	14,822,879.80	15,924,451.02	1,101,571.22
Receipts from Delinquent Taxes	745,000.00	-	745,000.00	1,227,409.61	482,409.61
Amount to be Raised by Taxes for Support of Municipal Budget	23,903,496.66	-	23,903,496.66	24,914,556.12	1,011,059.46
Total Budget Revenues	42,852,802.85	368,573.61	43,221,376.46	45,816,416.75	2,595,040.29
Other Credits to Income					
Unexpended Balance of Appropriation Reserves and Encumbrances	-	-	-	1,074,326.01	1,074,326.01
Miscellaneous Revenue not Anticipated	-	-	-	1,009,896.67	1,009,896.67
	-	-	-	2,084,222.68	2,084,222.68
Taxes Allocated to School and County	-	-	-	95,822,326.99	95,822,326.99
Total Other Credits to Income	-	-	-	97,906,549.67	97,906,549.67
Total Revenues and Other Credits to Income	\$ 42,852,802.85	\$ 368,573.61	\$ 43,221,376.46	\$ 143,722,966.42	\$ 100,501,589.96

References

A-2

**TOWNSHIP OF LAWRENCE
COUNTY OF MERCER, STATE OF NEW JERSEY**

A-2

**CURRENT FUND
STATEMENT OF EXPENDITURES AND OTHER CHARGES TO INCOME
Year Ended December 31, 2015**

	Appropriated		Paid or Charged	Reserved	Unexpended Balance Cancelled
	2015 Budget	Budget After Modification			
(A) Operations - within "CAP"					
GENERAL GOVERNMENT:					
Township Council and Mayor					
Salaries and Wages	\$ 60,000.00	\$ 60,000.00	\$ 55,365.52	\$ 4,634.48	\$ -
Other Expenses	5,875.00	5,875.00	4,314.04	1,560.96	-
Municipal Manager					
Salaries and Wages	249,990.00	239,990.00	216,451.39	23,538.61	-
Other Expenses	20,500.00	20,500.00	16,300.14	4,199.86	-
Municipal Clerk					
Salaries and Wages	243,040.00	243,040.00	241,747.88	1,292.12	-
Other Expenses	90,000.00	90,000.00	85,084.57	4,915.43	-
Legal Services and Expenses					
Other Expenses	245,000.00	245,000.00	142,663.00	102,337.00	-
Financial Administration					
Salaries and Wages	394,442.00	394,442.00	392,388.51	2,053.49	-
Other Expenses	74,000.00	74,000.00	70,703.33	3,296.67	-
Auditor					
Other Expenses	51,600.00	51,600.00	51,600.00	-	-
Assessment of Taxes					
Salaries and Wages	231,871.00	231,871.00	231,871.00	-	-
Other Expenses	40,000.00	40,000.00	27,992.74	12,007.26	-
Collection of Taxes					
Salaries and Wages	198,318.00	199,318.00	198,700.41	617.59	-
Other Expenses	60,000.00	60,000.00	45,563.75	14,436.25	-
Insurance					
Unemployment	82,000.00	82,000.00	82,000.00	-	-
General Liability	300,000.00	300,000.00	246,869.00	53,131.00	-
Workers Compensation	115,000.00	115,000.00	115,000.00	-	-
Employee Group Health	3,700,164.00	3,700,164.00	3,565,167.46	134,996.54	-
Health Insurance Waiver	53,000.00	53,000.00	43,526.74	9,473.26	-
Community Development Director					
Salaries and Wages	99,312.00	99,312.00	99,312.00	-	-
Other Expenses	8,000.00	8,000.00	6,275.26	1,724.74	-
Engineering Services					
Salaries and Wages	265,417.00	265,417.00	255,384.44	10,032.56	-
Other Expenses	20,500.00	20,500.00	20,367.55	132.45	-
Planning and Redevelopment					
Salaries and Wages	6,368.00	6,368.00	6,013.34	354.66	-
Other Expenses	2,200.00	2,200.00	666.52	1,533.48	-
Housing					
Salaries and Wages	67,329.00	67,329.00	66,028.91	1,300.09	-
Other Expenses	1,600.00	1,600.00	851.29	748.71	-
Zoning Board					
Other Expenses	59,000.00	59,000.00	24,009.95	34,990.05	-
Planning Board					
Other Expenses	98,000.00	98,000.00	35,390.15	62,609.85	-
Community Action Program					
Other Expenses	102,000.00	102,000.00	98,000.00	4,000.00	-
Landmark Advisory Committee					
Other Expenses	500.00	500.00	108.33	391.67	-
Rent Stabilization Board					
Other Expenses	1,500.00	1,500.00	-	1,500.00	-
Cable T.V. Advisory Board					
Other Expenses	250.00	250.00	-	250.00	-
Environmental Resources Committee					
Other Expenses	700.00	700.00	600.00	100.00	-
Historian					
Salaries and Wages	3,400.00	3,400.00	3,060.00	340.00	-
Other Expenses	1,700.00	1,700.00	55.00	1,645.00	-
Construction Board of Appeals					
Salaries and Wages	200.00	200.00	-	200.00	-
Other Expenses	100.00	100.00	-	100.00	-
Construction Official					
Salaries and Wages	733,566.00	716,566.00	671,512.73	45,053.27	-
Other Expenses	460,000.00	432,000.00	400,997.51	31,002.49	-
Sub-Total General Government	<u>8,146,442.00</u>	<u>8,092,442.00</u>	<u>7,521,942.46</u>	<u>570,499.54</u>	<u>-</u>

**TOWNSHIP OF LAWRENCE
COUNTY OF MERCER, STATE OF NEW JERSEY**

A-2

**CURRENT FUND
STATEMENT OF EXPENDITURES AND OTHER CHARGES TO INCOME (CONTINUED)
Year Ended December 31, 2015**

	Appropriated		Paid or Charged	Reserved	Unexpended Balance Cancelled
	2015 Budget	Budget After Modification			
PUBLIC SAFETY					
Police					
Salaries and Wages	6,659,723.00	6,659,723.00	6,525,977.29	133,745.71	-
Other Expenses	247,000.00	263,000.00	260,354.67	2,645.33	-
Police Dispatch/911					
Salaries and Wages	1.00	1.00	-	1.00	-
Other Expenses	736,000.00	736,000.00	730,179.00	5,821.00	-
Office of Emergency Management					
Salaries and Wages	76,416.00	76,416.00	72,085.56	4,330.44	-
Other Expenses	8,000.00	8,000.00	6,625.54	1,374.46	-
Lawrence Township Fire Services					
Salaries and Wages	268,973.00	268,973.00	265,478.11	3,494.89	-
Other Expenses	65,000.00	65,000.00	62,960.83	2,039.17	-
Aid to Volunteer Fire Companies					
Slackwood Fire Co	30,000.00	30,000.00	30,000.00	-	-
Lawrence Road Fire Co	30,000.00	30,000.00	30,000.00	-	-
Lawrenceville Fire Co	30,000.00	30,000.00	30,000.00	-	-
Emergency Medical Services					
Salaries and Wages	457,707.00	457,707.00	457,707.00	-	-
Other Expenses	27,000.00	27,000.00	27,000.00	-	-
Fire Inspector					
Salaries and Wages	213,535.00	213,535.00	197,632.87	15,902.13	-
Other Expenses	14,000.00	14,000.00	10,061.06	3,938.94	-
Municipal Court					
Salaries and Wages	369,154.00	382,154.00	381,729.36	424.64	-
Other Expenses	47,000.00	47,000.00	39,770.40	7,229.60	-
OSHA Compliance - P.L. 1983, Ch. 516					
Salaries and Wages	10,071.00	10,071.00	6,794.62	3,276.38	-
Other Expenses	42,500.00	48,500.00	48,500.00	-	-
Public Safety Advisory Committee					
Salaries and Wages	1,000.00	1,000.00	649.98	350.02	-
Other Expenses	100.00	100.00	-	100.00	-
Public Defender					
Salaries and Wages	8,680.00	8,680.00	8,680.00	-	-
Sub-Total Public Safety	<u>9,341,860.00</u>	<u>9,376,860.00</u>	<u>9,192,186.29</u>	<u>184,673.71</u>	<u>-</u>
PUBLIC WORKS					
Public Works Administration					
Salaries and Wages	216,381.00	216,381.00	216,381.00	-	-
Other Expenses	26,000.00	26,000.00	19,904.24	6,095.76	-
Streets and Roads					
Salaries and Wages	680,683.00	680,683.00	629,716.89	50,966.11	-
Other Expenses	89,000.00	89,000.00	85,794.43	3,205.57	-
Snow Removal					
Salaries and Wages	114,000.00	114,000.00	114,000.00	-	-
Other Expenses	175,000.00	190,000.00	190,000.00	-	-
Vehicle Maintenance					
Salaries and Wages	319,782.00	319,782.00	313,072.40	6,709.60	-
Other Expenses	303,000.00	303,000.00	302,964.96	35.04	-
Buildings and Grounds					
Salaries and Wages	176,923.00	187,923.00	187,923.00	-	-
Other Expenses	210,000.00	215,000.00	197,737.43	17,262.57	-
Ecological Center/Landfill O/E					
	100.00	100.00	-	100.00	-
Park Maintenance					
Salaries and Wages	160,248.00	160,248.00	160,248.00	-	-
Other Expenses	84,500.00	87,500.00	83,540.47	3,959.53	-
Solid Waste Collection					
Other Expenses	850,000.00	850,000.00	713,224.33	136,775.67	-
Garbage & Trash Removal - MClA					
Landfill - MClA	1,800,000.00	1,784,000.00	1,406,739.44	377,260.56	-
Apartment Complex Trash Collection					
Other Expenses	265,000.00	265,000.00	29,640.50	235,359.50	-
Sub-Total Public Works	<u>5,470,617.00</u>	<u>5,488,617.00</u>	<u>4,650,887.09</u>	<u>837,729.91</u>	<u>-</u>
HEALTH AND WELFARE BOARD:					
Board of Health - Local Health Agency					
Salaries and Wages	368,060.00	368,060.00	360,802.07	7,257.93	-
Other Expenses	37,000.00	37,000.00	29,402.50	7,597.50	-
Animal Control					
Salaries and Wages	51,764.00	51,764.00	51,764.00	-	-
Other Expenses	14,000.00	14,000.00	10,403.80	3,596.20	-
Sub-Total Health and Welfare Board	<u>470,824.00</u>	<u>470,824.00</u>	<u>452,372.37</u>	<u>18,451.63</u>	<u>-</u>

**TOWNSHIP OF LAWRENCE
COUNTY OF MERCER, STATE OF NEW JERSEY**

A-2

**CURRENT FUND
STATEMENT OF EXPENDITURES AND OTHER CHARGES TO INCOME (CONTINUED)
Year Ended December 31, 2015**

	Appropriated		Paid or Charged	Reserved	Unexpended Balance Cancelled
	2015 Budget	Budget After Modification			
RECREATION AND EDUCATION:					
Recreation Programming					
Salaries and Wages	298,769.00	298,769.00	285,458.02	13,310.98	-
Other Expenses	130,000.00	130,000.00	129,048.88	951.12	-
Senior Citizen Program					
Salaries and Wages	140,711.00	141,711.00	141,711.00	-	-
Other Expenses	16,000.00	16,000.00	14,289.35	1,710.65	-
Shade Tree Advisory Committee					
Other Expenses	750.00	750.00	412.50	337.50	-
Growth Management Committee					
Salaries and Wages	1,300.00	1,300.00	758.31	541.69	-
Other Expenses	2,500.00	2,500.00	1,153.00	1,347.00	-
Sub-Total Recreation and Education	590,030.00	591,030.00	572,831.06	18,198.94	-
OTHER NON-CLASSIFIED:					
Celebration of Special Events					
Other Expenses	8,500.00	8,500.00	8,500.00	-	-
Accumulated Absences	1,000.00	1,000.00	999.00	1.00	-
Utilities	1,570,000.00	1,570,000.00	1,287,268.55	282,731.45	-
Salary and Wage Adjustment	1.00	1.00	-	1.00	-
Sub-Total Other Non-Classified	1,579,501.00	1,579,501.00	1,296,767.55	282,733.45	-
Total Operations Within "CAPS"	25,599,274.00	25,599,274.00	23,686,986.82	1,912,287.18	-
Details:					
Salaries and Wages	13,147,134.00	13,147,135.00	12,817,404.61	329,730.39	-
Other Expenses	12,452,140.00	12,452,139.00	10,869,582.21	1,582,556.79	-
STATUTORY EXPENDITURES:					
Contributions to Public Employees' Retirement System	702,330.00	702,330.00	702,330.00	-	-
Social Security System	590,000.00	590,000.00	534,583.54	55,416.46	-
Police and Firemen's Pension Fund	1,557,811.00	1,557,811.00	1,557,811.00	-	-
Defined Contribution Retirement Program	9,000.00	9,000.00	7,220.96	1,779.04	-
Total Deferred Charges & Statutory Expenditures - Municipal Within "CAPS"	2,859,141.00	2,859,141.00	2,801,945.50	57,195.50	-
(H-1) Total General Appropriations for Municipal Purposes Within "CAPS"	28,458,415.00	28,458,415.00	26,488,932.32	1,969,482.68	-
(A) Operations Excluded from "CAPS"					
Sewerage Authority-ELSA					
Share of Costs	5,064,000.00	5,064,000.00	5,061,549.33	2,450.67	-
Fire Hydrant Service (contractual)	414,000.00	414,000.00	413,723.88	276.12	-
Municipal Court (Public Defender)					
Salaries and Wages	39,048.00	39,048.00	29,657.40	9,390.60	-
Medical Dispatch Services-Shared Services Agreement					
Other Expenses	45,000.00	45,000.00	38,340.00	6,660.00	-
NJDEP Recycling Tonnage Tax					
Other Expenses	36,000.00	36,000.00	31,096.79	4,903.21	-
Employee Group Health Insurance					
Other Expenses	120,836.00	120,836.00	-	120,836.00	-
LOSAP	33,000.00	33,000.00	32,999.83	0.17	-
Sub-Total - General Government - Outside "CAP"	5,751,884.00	5,751,884.00	5,607,367.23	144,516.77	-
Shared Service Agreements					
Ambulance Services					
Salaries and Wages	234,000.00	234,000.00	143,559.44	90,440.56	-
Other Expenses	60,000.00	60,000.00	55,245.19	4,754.81	-
Sub-Total - Additional Appropriations Offset by Appropriations	294,000.00	294,000.00	198,804.63	95,195.37	-

**TOWNSHIP OF LAWRENCE
COUNTY OF MERCER, STATE OF NEW JERSEY**

A-2

**CURRENT FUND
STATEMENT OF EXPENDITURES AND OTHER CHARGES TO INCOME (CONTINUED)
Year Ended December 31, 2015**

	Appropriated		Paid or Charged	Reserved	Unexpended Balance Cancelled
	2015 Budget	Budget After Modification			
STATE AND FEDERAL PROGRAMS OFFSET					
BY REVENUES					
Safe and Secure Communities					
Salaries and Wages	60,000.00	60,000.00	60,000.00	-	-
NJ Department of Environmental Protection - Clean Communities Program					
Other Expenses	-	67,685.39	67,685.39	-	-
Drunk Driving Enforcement Fund					
Salaries and Wages	-	3,305.57	3,305.57	-	-
Other Expenses	-	3,305.57	3,305.57	-	-
Municipal Alliance					
Other Expenses	21,708.00	21,708.00	21,708.00	-	-
Municipal Match	5,427.00	5,427.00	5,427.00	-	-
US Department of Justice -- Bullet Proof Vest					
Other Expenses	-	3,600.00	3,600.00	-	-
NJ Department of Environmental Protection -- Recycling Tonnage Grant					
Other Expenses	113,082.19	113,082.19	113,082.19	-	-
Municipal Alcohol Education and Rehabilitation					
Other Expenses	-	2,534.13	2,534.13	-	-
NJ Department of Law & Public Safety -- Emergency Management Grant					
Other Expenses	5,000.00	5,000.00	5,000.00	-	-
NJ Division of Highway Traffic Safety - Drive Sober Or Get Pulled Over					
Salaries and Wages	-	5,000.00	5,000.00	-	-
New Jersey Department of Health and Senior Services					
Tanning Establishment Inspections - O/E	200.00	200.00	200.00	-	-
Bristol Meyers Squibb -- Safety Town Grant					
Other Expenses	-	5,000.00	5,000.00	-	-
Mercer County Office of Emergency Management -- Emergency Medical Services					
Other Expenses	-	3,000.00	3,000.00	-	-
New Jersey Department of Law & Public Safety -- Ticket of Click it					
Salaries and Wages	-	4,000.00	4,000.00	-	-
Homeland Security Grant - Police K-9					
Other Expenses	8,000.00	8,000.00	8,000.00	-	-
Comcast Corporation-Technology Grant					
Other Expenses	50,000.00	50,000.00	50,000.00	-	-
FEMA Hazard Mitigation					
Other Expenses	-	250,000.00	250,000.00	-	-
Ebola Monitoring					
Other Expenses	-	2,100.00	2,100.00	-	-
Highway Safety Fund Safe Corridors					
Other Expenses	-	18,932.95	18,932.95	-	-
EMS Donation					
Other Expenses	-	110.00	110.00	-	-
Sub-Total State and Federal Grants	<u>263,417.19</u>	<u>631,990.80</u>	<u>631,990.80</u>	<u>-</u>	<u>-</u>
Total Operations Excluded from "Caps"	<u>6,309,301.19</u>	<u>6,677,874.80</u>	<u>6,438,162.66</u>	<u>239,712.14</u>	<u>-</u>
Details:					
Salaries and Wages	333,048.00	345,353.57	245,522.41	99,831.16	-
Other Expenses	<u>5,976,253.19</u>	<u>6,332,521.23</u>	<u>6,192,640.25</u>	<u>139,880.98</u>	<u>-</u>
Capital Improvements Excluded from "CAPS"					
Capital Improvement Fund	<u>350,000.00</u>	<u>350,000.00</u>	<u>350,000.00</u>	<u>-</u>	<u>-</u>
Total Capital Improvements Excluded from "CAPS"	<u>350,000.00</u>	<u>350,000.00</u>	<u>350,000.00</u>	<u>-</u>	<u>-</u>
Debt Service Excluded From CAPS:					
Payment of Bond Principal	2,485,000.00	2,485,000.00	2,485,000.00	-	-
Payment of Bond Anticipation Notes and Capital Notes	815,000.00	815,000.00	815,000.00	-	-
Interest on Bonds	386,650.00	386,650.00	386,650.00	-	-
Interest on Notes	<u>95,580.00</u>	<u>95,580.00</u>	<u>95,580.00</u>	<u>-</u>	<u>-</u>
Total Municipal Debt Service - Excluded from "CAPS"	<u>3,782,230.00</u>	<u>3,782,230.00</u>	<u>3,782,230.00</u>	<u>-</u>	<u>-</u>
Deferred Charges and Statutory Expenditures - Excluded from "CAPS"					
Deferred Charges					
Special Emergency Authorizations	160,000.00	160,000.00	160,000.00	-	-
Deferred Charge - General Capital Ordinances 1667-01 & 1714-02	<u>15,000.00</u>	<u>15,000.00</u>	<u>15,000.00</u>	<u>-</u>	<u>-</u>
Total Deferred Charges -- Municipal Excluded from "CAPS"	<u>175,000.00</u>	<u>175,000.00</u>	<u>175,000.00</u>	<u>-</u>	<u>-</u>
Total General Appropriations For Municipal Purposes Excluded from "CAPS"	<u>10,616,531.19</u>	<u>10,985,104.80</u>	<u>10,745,392.66</u>	<u>239,712.14</u>	<u>-</u>
Subtotal General Appropriations	39,074,946.19	39,443,519.80	37,234,324.98	2,209,194.82	-
Reserve for Uncollected Taxes	<u>3,777,856.66</u>	<u>3,777,856.66</u>	<u>3,777,856.66</u>	<u>-</u>	<u>-</u>
Total General Appropriations	<u>\$ 42,852,802.85</u>	<u>\$ 43,221,376.46</u>	<u>\$ 41,012,181.64</u>	<u>\$ 2,209,194.82</u>	<u>\$ -</u>
References	A-1	A-1			
Adopted Budget		\$ 42,852,802.85			
Approp. N.J.S.A. (40A:4-87)(Chap 159)	A-10	368,573.61			
Emergency Appropriation -- Engineering Salaries and Wages		-			
Modified Budget		<u>\$ 43,221,376.46</u>			
		A-1			

**TOWNSHIP OF LAWRENCE
COUNTY OF MERCER, STATE OF NEW JERSEY**

A-3

**CURRENT FUND
SCHEDULE OF TAXES RECEIVABLE AND ANALYSIS OF PROPERTY TAX LEVY
Year Ended December 31, 2015**

Year	Balance - December 31, 2014	2015 Levy & Added Taxes Adjustment to Levies	2015 Collections	Due From State of N.J. Senior Citizens And Veterans	Remitted, Abated & Cancelled	Transferred to Tax Title Liens	Balance - December 31, 2015
FY2013	\$ 93,366.53	\$ -	\$ 93,366.53	\$ -	\$ -	\$ -	\$ -
FY2014	1,067,943.08	39,853.40	1,107,796.48	-	-	-	-
	1,161,309.61	39,853.40	1,201,163.01	-	-	-	-
FY2015	-	121,193,837.20	119,739,853.78	187,186.22	10,254.03	41,463.80	1,215,079.37
	<u>\$ 1,161,309.61</u>	<u>\$ 121,233,690.60</u>	<u>\$ 120,941,016.79</u>	<u>\$ 187,186.22</u>	<u>\$ 10,254.03</u>	<u>\$ 41,463.80</u>	<u>\$ 1,215,079.37</u>
Reference	A			A-12		A-4	A
		Prepaid Applied Collected	\$ 668,005.82 119,071,847.96 <u>\$ 119,739,853.78</u>				

Analysis of 2015 Property Tax Levy

Tax Yield

General Purpose	\$ 120,804,638.71
Added Taxes (N.J.S.A. 54:4-63.1 et seq.)	389,198.49
	<u>121,193,837.20</u>

Tax Levy

Local School District Tax	\$ 64,085,523.00
County Taxes	\$ 27,848,468.89
County Library Taxes	2,684,839.00
County Open Space	1,203,496.10
County Added Taxes	103,318.67
	<u>31,840,122.66</u>
Local Tax for Municipal Purposes	23,903,496.66
Open Space Tax	1,360,656.00
Open Space Tax - Added	4,038.88
	<u>25,268,191.54</u>
	<u>\$ 121,193,837.20</u>

**TOWNSHIP OF LAWRENCE
COUNTY OF MERCER, STATE OF NEW JERSEY**

A-4

**CURRENT FUND
SCHEDULE OF TAX TITLE LIENS RECEIVABLE
Year Ended December 31, 2015**

Balance - December 31, 2014	<u>Reference</u> A		\$ 1,447,637.81
Increased by:			
Transfers from property taxes receivable	A-3	\$ 41,463.80	
Adjustments to tax title lien interest, costs and penalties		<u>2,259.14</u>	
			<u>43,722.94</u>
			1,491,360.75
Decreased by:			
Collected		<u>26,246.60</u>	
			<u>26,246.60</u>
Balance - December 31, 2015	A		<u>\$ 1,465,114.15</u>

**CURRENT FUND
STATEMENT OF PROPERTY ACQUIRED FOR TAXES (ASSESSED VALUATION)
Year Ended December 31, 2015**

A-5

Balance - December 31, 2014	<u>Reference</u> A	<u>\$ 168,410.00</u>
Balance - December 31, 2015		<u>\$ 168,410.00</u>

**TOWNSHIP OF LAWRENCE
COUNTY OF MERCER, STATE OF NEW JERSEY**

A-6

**CURRENT FUND
SCHEDULE OF 2014 APPROPRIATION RESERVES
Year Ended December 31, 2015**

	Encumbrances December 31, 2014	Appropriation Reserves December 31, 2014	Balance After Transfer	Paid or Charged	Balance Lapsed
(A) Operations - within "CAP"					
GENERAL GOVERNMENT:					
Township Council and Mayor					
Salaries and Wages	\$ -	\$ 2,476.85	\$ 2,476.85	\$ -	\$ 2,476.85
Other Expenses	808.95	3,194.40	4,003.35	779.82	3,223.53
Municipal Manager					
Salaries and Wages	-	29,406.66	19,406.66	2,189.25	17,217.41
Other Expenses	1,925.95	2,743.96	4,669.91	2,187.00	2,482.91
Municipal Clerk					
Salaries and Wages	-	2,330.20	3,330.20	2,609.46	720.74
Other Expenses	1,614.22	5,244.51	6,858.73	2,372.27	4,486.46
Legal Services and Expenses					
Other Expenses	27,150.07	123,550.00	150,700.07	24,564.39	126,135.68
Accounts and Control					
Salaries and Wages	-	9,476.93	9,476.93	3,045.81	6,431.12
Other Expenses	7,040.99	9,376.73	16,417.72	12,023.44	4,394.28
Cable TV Advisory Board					
Other Expenses	-	250.00	250.00	-	250.00
Assessment of Taxes					
Salaries and Wages	-	2,360.01	3,360.01	2,566.85	793.16
Other Expenses	31.25	5,185.12	5,216.37	1,426.68	3,789.69
Collection of Taxes					
Salaries and Wages	-	1,857.70	2,857.70	2,177.54	680.16
Other Expenses	2,031.88	6,420.91	8,452.79	1,791.46	6,661.33
Environmental Resources					
Other Expenses	-	265.00	265.00	-	265.00
Rent Control Board					
Other Expenses	-	1,500.00	1,500.00	-	1,500.00
Construction Board of Appeals					
Salaries and Wages	-	200.00	200.00	-	200.00
Other Expenses	-	100.00	100.00	-	100.00
Planning and Redevelopment					
Salaries and Wages	-	355.22	355.22	-	355.22
Other Expenses	1,133.14	1,028.89	2,162.03	657.22	1,504.81
Engineering Services					
Salaries and Wages	-	23,434.94	23,434.94	3,219.25	20,215.69
Other Expenses	1,000.72	2,910.35	3,911.07	140.63	3,770.44
Historian					
Salaries and Wages	-	80.00	80.00	-	80.00
Other Expenses	-	520.00	520.00	-	520.00
Landmark Advisory Committee					
Other Expenses	-	500.00	500.00	-	500.00
Housing					
Salaries and Wages	-	948.50	948.50	724.62	223.88
Other Expenses	-	1,065.69	1,065.69	1,000.00	65.69

**TOWNSHIP OF LAWRENCE
COUNTY OF MERCER, STATE OF NEW JERSEY**

A-6

**CURRENT FUND
SCHEDULE OF 2014 APPROPRIATION RESERVES (CONTINUED)
Year Ended December 31, 2015**

	Encumbrances December 31, 2014	Appropriation Reserves December 31, 2014	Balance After Transfer	Paid or Charged	Balance Lapsed
Planning Board					
Other Expenses	21,809.00	44,766.76	66,575.76	8,328.50	58,247.26
Zoning Board					
Other Expenses	20,014.63	31,442.17	51,456.80	1,088.48	50,368.32
Community Action Program					
Other Expenses	-	8,166.67	8,166.67	-	8,166.67
Construction Official					
Salaries and Wages	2,665.60	15,649.31	18,314.91	8,910.25	9,404.66
Other Expenses	2,062.27	68,517.85	30,580.12	1,869.21	28,710.91
Community Development Director					
Salaries and Wages	-	8.07	2,008.07	1,103.90	904.17
Other Expenses	1,275.07	3,279.94	4,555.01	1,631.46	2,923.55
Insurance					
General Liability	-	51,026.20	216,026.20	215,000.00	1,026.20
Employee Group Health	-	189,448.04	24,448.04	7,728.74	16,719.30
Health Insurance Waiver	-	1,631.87	1,631.87	-	1,631.87
PUBLIC SAFETY					
Police					
Salaries and Wages	-	67,994.23	67,994.23	65,833.66	2,160.57
Other Expenses	120,026.86	11,345.70	131,372.56	130,667.71	704.85
Police Dispatch/911					
Salaries and Wages	-	1.00	1.00	-	1.00
Other Expenses	59,950.00	15,565.95	75,515.95	59,950.00	15,565.95
Emergency Management					
Salaries and Wages	-	5,335.01	5,335.01	824.67	4,510.34
Other Expenses	4,917.85	102.18	5,020.03	4,917.85	102.18
Lawrence Township Fire Services					
Salaries and Wages	-	3,928.93	3,928.93	2,455.04	1,473.89
Other Expenses	7,504.81	28,402.21	35,907.02	20,493.55	15,413.47
Fire Inspector					
Salaries and Wages	-	1,128.81	3,128.81	2,272.62	856.19
Other Expenses	64.99	6,178.74	6,243.73	125.87	6,117.86
Emergency Medical Services					
Other Expenses	19,046.11	78.72	19,124.83	19,012.11	112.72
Public Safety Advisory Committee					
Salaries and Wages	-	166.68	166.68	-	166.68
Other Expenses	-	100.00	100.00	-	100.00
Municipal Court					
Salaries and Wages	-	12,863.36	12,863.36	1,708.89	11,154.47
Other Expenses	6,594.01	8,197.57	14,791.58	4,226.63	10,564.95
OSHA Compliance - P.L. 1983, Ch. 516					
Other Expenses	1,293.50	1,779.09	3,072.59	1,233.50	1,839.09

**TOWNSHIP OF LAWRENCE
COUNTY OF MERCER, STATE OF NEW JERSEY**

A-6

**CURRENT FUND
SCHEDULE OF 2014 APPROPRIATION RESERVES (CONTINUED)
Year Ended December 31, 2015**

	Encumbrances December 31, 2014	Appropriation Reserves December 31, 2014	Balance After Transfer	Paid or Charged	Balance Lapsed
PUBLIC WORKS					
Streets and Roads					
Salaries and Wages	-	43,858.23	33,858.23	4,573.36	29,284.87
Other Expenses	17,411.06	2,311.41	19,722.47	19,721.92	0.55
Public Works Administration					
Salaries and Wages	-	-	3,000.00	2,428.86	571.14
Other Expenses	777.07	4,387.99	5,165.06	3,526.19	1,638.87
Buildings and Grounds					
Salaries and Wages	-	-	2,000.00	1,179.46	820.54
Other Expenses	64,668.08	3,773.86	68,441.94	67,811.03	630.91
Ecological Center/Landfill					
Other Expenses	-	100.00	100.00	-	100.00
Solid Waste Collection					
Other Expenses	51,378.69	170,204.36	196,583.05	118,992.34	77,590.71
Garbage & Trash Removal - MCIA					
Landfill - MCIA	-	302,810.64	277,810.64	113,612.04	164,198.60
Apartment Complex Trash Collection					
Other Expenses	10,349.90	217,107.01	227,456.91	216,778.05	10,678.86
Park Maintenance					
Salaries and Wages	-	-	3,000.00	2,753.80	246.20
Other Expenses	10,477.68	2,770.87	13,248.55	13,184.65	63.90
Snow Removal					
Other Expenses	66,630.80	73,729.39	265,360.19	265,039.54	320.65
Vehicle and Equipment Maintenance					
Salaries and Wages	-	3,565.26	3,565.26	3,005.91	559.35
Other Expenses	95,178.41	57.28	95,235.69	95,160.41	75.28
HEALTH AND WELFARE BOARD:					
Board of Health - Local Health Agency					
Salaries and Wages	-	2,509.44	4,509.44	4,145.54	363.90
Other Expenses	8,440.16	3,773.50	12,213.66	5,594.64	6,619.02
Animal Control					
Salaries and Wages	-	-	1,000.00	632.10	367.90
Other Expenses	500.00	1,734.31	2,234.31	2,134.31	100.00
RECREATION AND EDUCATION:					
Recreation Programming					
Salaries and Wages	-	5,739.54	5,739.54	2,754.06	2,985.48
Other Expenses	10,641.46	19,953.37	30,594.83	11,315.97	19,278.86
Senior Citizens					
Salaries and Wages	-	525.90	2,525.90	1,609.29	916.61
Other Expenses	2,995.94	2,490.11	5,486.05	3,936.57	1,549.48
Shade Tree Advisory Committee					
Other Expenses	-	170.00	170.00	-	170.00
Growth Management Committee					
Salaries and Wages	-	108.37	108.37	-	108.37
Other Expenses	-	1,144.00	1,144.00	-	1,144.00
Special Events					
Other Expenses	250.00	5,844.92	6,094.92	5,075.12	1,019.80
OTHER NON-CLASSIFIED:					
Utilities	32,237.80	209,510.05	206,747.85	118,173.52	88,574.33
Salary and Wage Adjustment	-	1.00	1.00	-	1.00

**TOWNSHIP OF LAWRENCE
COUNTY OF MERCER, STATE OF NEW JERSEY**

A-6

**CURRENT FUND
SCHEDULE OF 2014 APPROPRIATION RESERVES (CONTINUED)
Year Ended December 31, 2015**

	Encumbrances December 31, 2014	Appropriation Reserves December 31, 2014	Balance After Transfer	Paid or Charged	Balance Lapsed
STATUTORY EXPENDITURES:					
Contributions to Public Employees' Retirement System	-	0.42	0.42	-	0.42
Social Security System	-	46,204.26	46,204.26	32,129.09	14,075.17
Police and Firemen's Pension Fund	-	0.55	0.55	-	0.55
Defined Contribution Retirement Program	-	767.13	767.13	-	767.13
(A) Operations Excluded from "CAPS"					
Sewerage Authority					
Share of Costs	-	3,421.23	3,421.23	-	3,421.23
Fire Hydrant Service (contractual)	-	276.12	276.12	-	276.12
Municipal Court (Public Defender)					
Salaries and Wages	-	11,139.96	11,139.96	-	11,139.96
Medical Dispatch Services					
Other Expenses	-	12,405.00	12,405.00	-	12,405.00
NJDEP Recycling Tonnage Tax					
Other Expenses	-	8,081.73	8,081.73	-	8,081.73
LOSAP	-	32,725.00	32,725.00	-	32,725.00
Additional Appropriations Offset by Revenues					
Ambulance Services					
Salaries and Wages	-	108,979.59	108,979.59	6,937.98	102,041.61
Other Expenses	-	25,280.57	25,280.57	3,859.85	21,420.72
Red Light Camera Program					
Other Expenses	-	1.02	1.02	-	1.02
	<u>\$ 681,898.92</u>	<u>\$ 2,141,351.02</u>	<u>\$ 2,823,249.94</u>	<u>\$ 1,748,923.93</u>	<u>\$ 1,074,326.01</u>
<u>References</u>	<u>A</u>	<u>A</u>			

**TOWNSHIP OF LAWRENCE
COUNTY OF MERCER, STATE OF NEW JERSEY**

A-7

**CURRENT FUND
SCHEDULE OF SEWER CHARGES RECEIVABLE
Year Ended December 31, 2015**

Balance - December 31, 2014	<u>Reference</u> A		\$ 346,410.47
Increased by			
Billings		\$ 5,493,695.37	
Billing Adjustments		<u>51,622.48</u>	
			<u>5,545,317.85</u>
			5,891,728.32
Decreased by			
Collections	A-1	<u>5,581,298.32</u>	
			<u>5,581,298.32</u>
Balance - December 31, 2015	A		<u><u>\$ 310,430.00</u></u>

**TOWNSHIP OF LAWRENCE
COUNTY OF MERCER, STATE OF NEW JERSEY**

A-8

CURRENT FUND
SCHEDULE OF SEWER LIENS RECEIVABLE
Year Ended December 31, 2015

	<u>Reference</u>	
Balance - December 31, 2014	A	\$ 8,889.56
Decreased by collections		518.47
Balance - December 31, 2015	A	<u>\$ 8,371.09</u>

**TOWNSHIP OF LAWRENCE
COUNTY OF MERCER, STATE OF NEW JERSEY**

A-9

**CURRENT FUND
SCHEDULE OF FEDERAL AND STATE GRANTS RECEIVABLE - GRANT FUND
Year Ended December 31, 2015**

FEDERAL GRANTS	Balance - December 31, 2014	2015			Unapprop. Grant Receipts	Balance - December 31, 2015
		Revenue Realized	Township Match	Received		
Cops in School II	\$ 14,503.00	\$ -	\$ -	\$ -	\$ -	\$ 14,503.00
Cops Supplemental II	1,950.31	-	-	-	-	1,950.31
U.S. Department of Agriculture - Wildlife Habitat - Drexel Woods Nature Center	1,824.75	-	-	-	-	1,824.75
Total Federal Programs	18,278.06	-	-	-	-	18,278.06
STATE GRANTS						
Municipal Alliance on Alcoholism and Drug Abuse	51,267.42	21,708.00	-	19,175.00	-	53,800.42
Alcohol Education	-	2,534.13	-	2,534.13	-	-
2010 NJ Exercise Support Grant	(0.69)	-	-	-	-	(0.69)
Over the Limit -- Statewide Crackdown	2,100.00	-	-	-	-	2,100.00
Hwy. Safety - Safe Corridors	-	18,932.95	-	-	-	18,932.95
Clicket or Ticket	4,133.66	4,000.00	-	4,000.00	-	4,133.66
Main Street Trans/Street Improvement	1,116.22	-	-	-	-	1,116.22
H-1 N-1	6.00	-	-	-	-	6.00
Recycling Tonnage	180.00	113,082.19	-	-	113,082.19	180.00
Safe and Secure Communities Program	10,252.10	60,000.00	-	33,132.00	-	37,120.10
Civil Disturbance Hazmat Release	9,000.00	-	-	-	-	9,000.00
2009 Communication Equipment Public Response	55.38	-	-	-	-	55.38
Safe Corridors	44,420.15	-	-	44,420.15	-	-
COPS in Shops - Undercover	3,318.52	-	-	-	-	3,318.52
Drexel Woods Trail Improvements	219.40	-	-	-	-	219.40
2010 DVRPC Brunswick Pike Development	24,618.94	-	-	-	-	24,618.94
Mercer County Working Group	1,271.65	-	-	-	-	1,271.65
Bulletproof Vests	15,428.65	3,600.00	6,604.50	4,400.00	-	8,024.15
2014 Johnson Trolley Line Footbridge	14,100.50	-	-	-	-	14,100.50
Edward Byrne Memorial Justice	3,496.70	-	-	-	-	3,496.70
Body Armor	2,235.31	-	7,121.58	-	(4,886.27)	-
Tanning Establishment Inspections	-	200.00	-	-	200.00	-
DDEF	-	6,611.14	-	6,611.14	-	-
BMS Safety Town	-	5,000.00	-	-	-	5,000.00
Mercer County First Aid Squad	-	3,000.00	-	3,000.00	-	-
Clean Communities	-	67,685.39	-	67,685.39	-	-
Over the Limit Under Arrest Statewide Crackdown	4,400.00	-	-	-	-	4,400.00
Sustainable New Jersey	10,000.00	-	-	500.00	-	9,500.00
DCA Block Grant Homefront Roof	46,026.00	-	-	-	-	46,026.00
Comcast Technology	-	50,000.00	-	50,000.00	-	-
Emergency Management Performance	-	5,000.00	-	-	5,000.00	-
EMS - Donation - 2015	-	110.00	-	110.00	-	-
Ebola Monitoring	-	2,100.00	-	2,100.00	-	-
FEMA - Hazard Mitigation Grant	-	250,000.00	-	-	-	250,000.00
Drive Sober or Get Pulled Over	4,400.00	5,000.00	-	5,000.00	-	4,400.00
Police - K-9	-	8,000.00	-	8,000.00	-	-
DVRPC Transportation & Community Development	13,854.10	-	-	-	-	13,854.10
Total State Programs	265,900.01	626,563.80	13,726.08	250,667.81	113,395.92	514,674.00
	\$ 284,178.07	\$ 626,563.80	\$ 13,726.08	\$ 250,667.81	\$ 113,395.92	\$ 532,952.06
References	A					A

**TOWNSHIP OF LAWRENCE
COUNTY OF MERCER, STATE OF NEW JERSEY**

**CURRENT FUND
SCHEDULE OF APPROPRIATED RESERVES FOR STATE AND FEDERAL GRANTS
Year Ended December 31, 2015**

	Year	Balance - December 31, 2014	Transferred from 2015 Budget Appropriations		Canceled or Paid or Charged	Grant Adjustment	Balance - December 31, 2015
			Budget	Appropriation By 40A:4-87			
FEDERAL							
U.S. Department of Agriculture - Wildlife Habitat - Drexel Woods Nature Center	2008	\$ 3,441.00	\$ -	\$ -	\$ 1,616.25	\$ -	\$ 1,824.75
FEMA - 2015	2015	-	-	250,000.00	-	-	250,000.00
STATE							
State of New Jersey Department of Community Affairs Small Cities	2007	41.56	-	-	-	-	41.56
Body Armor	2010	2,440.79	-	-	4,982.75	(2,541.96)	-
	2012	-	-	-	(0.05)	-	0.05
	2013	9,684.62	-	-	9,684.62	-	-
	2014	17,103.16	-	-	15,734.86	-	1,368.30
Tobacco Age-of-Sale Enforcement Program	2002	1,020.00	-	-	1,020.00	-	-
	2003	14.49	-	-	14.49	-	-
	2004	1,252.96	-	-	1,252.96	-	-
	2005	1,260.00	-	-	1,260.00	-	-
	2006	112.84	-	-	112.84	-	-
	2007	349.54	-	-	349.54	-	-
	2008	900.00	-	-	900.00	-	-
Click It or Ticket	2012	6,150.00	-	-	-	-	6,150.00
	2013	4,000.00	-	-	-	-	4,000.00
	2014	4,000.00	-	-	-	-	4,000.00
	2015	-	-	4,000.00	-	-	4,000.00
Municipal Alliance on Alcoholism and Drug Abuse	2004	7,397.10	-	-	-	-	7,397.10
	2005	2,251.04	-	-	-	-	2,251.04
	2007	2,833.02	-	-	-	-	2,833.02
	2008	6,582.04	-	-	-	-	6,582.04
	2009	6,795.77	-	-	-	-	6,795.77
	2010	6,113.12	-	-	-	-	6,113.12
	2011	1,770.52	-	-	-	-	1,770.52
	2012	7,518.07	-	-	-	-	7,518.07
	2013	107.41	-	-	-	-	107.41
	2014	3,529.44	-	-	3,731.00	(648.50)	446.94
	2014	8,527.50	-	-	8,527.50	-	-
	2015	-	27,135.00	-	14,782.17	-	12,352.83
Drunk Driving Enforcement Fund (DDEF)	2012	10,950.69	-	-	10,950.69	-	-
	2013	7,399.46	-	-	7,399.46	-	-
	2014	5,896.03	-	-	5,896.03	-	-
	2015	-	-	6,611.14	1,117.98	-	5,493.16

**TOWNSHIP OF LAWRENCE
COUNTY OF MERCER, STATE OF NEW JERSEY**

**CURRENT FUND
SCHEDULE OF APPROPRIATED RESERVES FOR STATE AND FEDERAL GRANTS (CONTINUED)
Year Ended December 31, 2015**

	Year	Balance - December 31, 2014	Transferred from 2015 Budget Appropriations		Canceled or Paid or Charged	Grant Adjustment	Balance - December 31, 2015
			Budget	Appropriation By 40A:4-87			
Alcohol Education	2011	-	-	-	-	-	-
	2012	217.95	-	-	217.95	-	-
	2013	1,583.24	-	-	1,583.24	-	-
	2014	177.24	-	-	177.24	-	-
	2015	-	-	2,534.13	-	-	2,534.13
Recycling Tonnage Grant	2010	-	-	-	9,955.00	(9,955.00)	-
	2011	33,809.02	-	-	66,377.02	(32,700.00)	132.00
	2012	60,178.96	-	-	60,178.96	-	-
	2013	26,926.67	-	-	41,972.05	(15,045.38)	(0.00)
	2014	62,448.04	-	-	24,832.91	-	37,615.13
	2015	-	113,082.19	-	-	-	113,082.19
Mercer County Green Links Commission	1996	262.00	-	-	262.00	-	-
Breary House Restoration	2000	10,863.74	-	-	10,863.74	-	-
Hwy. Safety - Occupant Protection	2000	503.52	-	-	-	-	503.52
Emergency Medical Services Reimbursement Defibrillator	2001	6.00	-	-	-	-	6.00
New Jersey Department of Health & Senior Services Hepatitis B Immunizations	2012	273.24	-	-	-	-	273.24
Hepatitis B Immunizations	2013	154.08	-	-	-	-	154.08
Tobacco Control, Prevention, Treatment Education Service	2008	360.00	-	-	360.00	-	-
Tobacco Control, Prevention, Treatment Education Service	2008	1,080.00	-	-	1,080.00	-	-
Safe and Secure Communities Program	2015	-	60,000.00	-	60,000.00	-	-
Clean Communities	2013	8.39	-	-	8.39	-	-
	2014	29,683.96	-	-	35,313.96	(5,630.00)	-
	2015	-	-	67,685.39	136.75	-	67,548.64
Colonial Heights Tree Planting	2002	2,030.00	-	-	2,030.00	-	-
Bulletproof Vest	2014	4,825.35	-	-	4,825.35	-	-
	2015	-	-	3,600.00	3,600.00	-	-
Livable Communities - Playground	2003	3,476.00	-	-	3,476.00	-	-

**TOWNSHIP OF LAWRENCE
COUNTY OF MERCER, STATE OF NEW JERSEY**

A-10

**CURRENT FUND
SCHEDULE OF APPROPRIATED RESERVES FOR STATE AND FEDERAL GRANTS (CONTINUED)
Year Ended December 31, 2015**

	Year	December 31, 2014	Transferred from 2015 Budget Appropriations		Canceled or Paid or Charged	Grant Adjustment	Balance December 31, 2015
			Budget	Appropriation By 40A:4-87			
NJ Department of Law & Public Safety Pipeline & Hazardous Materials Administration (HEMP)	2008	30.00	-	-	-	-	30.00
Small Cities Block Grant	2004	10,708.37	-	-	-	(13,805.00)	24,513.37
Smart Future Planning Grant	2004	15,358.14	-	-	-	-	15,358.14
Lawrenceville School -- Historic Literature	2008	10.00	-	-	10.00	-	-
Mercer County -- Alcohol & Drug Alliance	2006	500.00	-	-	500.00	-	-
Over the Limit -- Statewide Crackdown	2010	2,100.00	-	-	-	-	2,100.00
Youth Football		1,000.00	-	-	1,000.00	-	-
BMS Safety Town	2014	2,862.38	-	-	-	-	2,862.38
	2015	-	-	5,000.00	5,000.00	-	-
Mercer County -- Neighborhood Preservation - Johnson Avenue	2008	15,586.30	-	-	-	-	15,586.30
Safe Streets to Schools	2008	47,000.00	-	-	47,000.00	-	-
NJ Juvenile Justice Grant	2009	20.00	-	-	-	-	20.00
2010 COPS in Shops	2010	3,720.44	-	-	444.48	-	3,275.96
Cars E Mall	2011	17,877.56	-	-	-	-	17,877.56
H1N1	2011	6.00	-	-	-	-	6.00
Edward Byrne Justice	2011	10,097.00	-	-	-	-	10,097.00
Highway Safety Police Vehicles	2011	1,729.83	-	-	1,729.83	-	0.00
DVRPC Transportation & Community Development	2012	5,000.08	-	-	-	-	5,000.08
NJDCA Small Cities CDBG	2012	0.90	-	-	2,264.79	(7,249.35)	4,985.46
NJ Exercise Support	2012	387.05	-	-	630.00	(630.00)	387.05

**TOWNSHIP OF LAWRENCE
COUNTY OF MERCER, STATE OF NEW JERSEY**

**CURRENT FUND
SCHEDULE OF APPROPRIATED RESERVES FOR STATE AND FEDERAL GRANTS (CONTINUED)
Year Ended December 31, 2015**

	Year	December 31, 2014	Transferred from 2015 Budget Appropriations		Canceled or Paid or Charged	Grant Adjustment	Balance December 31, 2015
			Budget	Appropriation By 40A:4-87			
Lawrence Township Affordable Housing							
Economic Stability	2012	241,492.57	-	-	140,500.00	-	100,992.57
Unit Rehabilitation	2012	33,400.00	-	-	103,163.41	(82,395.55)	12,632.14
Contro Extensions	2012	342,500.00	-	-	-	-	342,500.00
Lawrence Township Affordable Control Extension	2013	276,000.00	-	-	-	-	276,000.00
Lawrence Township Affordable Unit rehab	2013	4,597.27	-	-	50,000.00	(45,402.73)	-
Lawrence Township Affordable Unit rehab	2014	150,000.00	-	-	106,625.27	-	43,374.73
FEMA Commodity Distribution Points	2012	2,922.00	-	-	-	-	2,922.00
DVRCP Lawrence-Hopewell Trail	2012	0.02	-	-	-	-	0.02
Emergency Management Performance	2012	160.50	-	-	-	-	160.50
	2015	-	5,000.00	-	5,000.00	-	-
Drive Sober or Get Pulled Over	2012	4,400.00	-	-	-	-	4,400.00
	2015	-	-	5,000.00	-	-	5,000.00
Radon Testing Kit	2012	396.00	-	-	-	-	396.00
Training Inspection	2012	200.00	-	-	-	-	200.00
	2014	200.00	-	-	-	-	200.00
	2015	-	200.00	-	-	-	200.00
Drive Sober or Get Pulled Over - Year End	2012	2,850.00	-	-	-	-	2,850.00
Emergency Medical Services	2013	-	-	-	3,000.00	(3,000.00)	-
Emergency Medical Services - Donation	2014	100.00	-	-	-	-	100.00
Emergency Medical Services - Donation	2014	100.00	-	-	-	-	100.00
	2015	-	-	110.00	-	-	110.00
Sustainable NJ Small Grant	2014	20,000.00	-	-	5,960.00	-	14,040.00
Comcast Technology	2015	-	50,000.00	-	809.94	31,541.92	17,648.14
Police K-9	2015	-	8,000.00	-	8,000.00	-	-
Ebola Monitoring	2015	-	-	2,100.00	2,100.00	-	-
Mercer County EMS Contribution	2015	-	-	3,000.00	-	-	3,000.00
Hwy. Safety - Safe Corridors	2014	35,000.00	-	-	44,420.15	(9,420.15)	(0.00)
	2015	-	-	18,932.95	-	-	18,932.95
		<u>\$ 1,616,621.98</u>	<u>\$ 263,417.19</u>	<u>\$ 368,573.61</u>	<u>\$ 944,741.52</u>	<u>\$ (196,881.70)</u>	<u>\$ 1,500,752.96</u>
Reference		A		A-2			A
		Revenues	\$ 257,990.19				
		Match	5,427.00				
			<u>\$ 263,417.19</u>				

**TOWNSHIP OF LAWRENCE
COUNTY OF MERCER, STATE OF NEW JERSEY**

A-11

**CURRENT FUND
SCHEDULE OF UNAPPROPRIATED RESERVES FOR STATE AND FEDERAL GRANTS
Year Ended December 31, 2015**

	Balance - December 31, 2014	Grants Received In 2015	Applied to State & Fed. Grants Receivable	Balance - December 31, 2015
EMMA - 2014	\$ 5,000.00	\$ -	\$ 5,000.00	\$ -
Solid Waste Recycling Tonnage-- 2013	113,082.19	-	113,082.19	-
Body Armor -- 2015	-	4,886.27	-	4,886.27
Body Armor -- 2015	-	5,551.65	-	5,551.65
Tanning Inspections - 2014	200.00	-	200.00	-
Tanning Inspections - 2015	-	200.00	-	200.00
Mercer County First Aid Donation	-	3,000.00	-	3,000.00
	<u>\$ 118,282.19</u>	<u>\$ 13,637.92</u>	<u>\$ 118,282.19</u>	<u>\$ 13,637.92</u>
<u>Reference</u>	A			A

**TOWNSHIP OF LAWRENCE
COUNTY OF MERCER, STATE OF NEW JERSEY**

A-12

**CURRENT FUND
SCHEDULE OF DUE FROM STATE OF NEW JERSEY – VETERAN & SENIOR CITIZEN
DEDUCTIONS
Year Ended December 31, 2015**

	<u>Reference</u>	
Balance - December 31, 2014 (Due From)	A	\$ 68,217.82
.		
Increased by:		
Veterans Deductions Allowed per Duplicate	\$ 154,000.00	
Senior Citizens' Deductions Allowed per Duplicate	<u>36,500.00</u>	
	190,500.00	
Add: Vets & Senior Citizens' Deductions Allowed by Collector	<u>2,069.10</u>	
	192,569.10	
Less: Senior Citizens' Disallowed by Collector	<u>5,382.88</u>	
		<u>187,186.22</u>
		255,404.04
Decreased by:		
Received -- as per DLGS	<u>193,936.22</u>	
		<u>193,936.22</u>
Balance - December 31, 2015 (Due From)	A	<u>\$ 61,467.82</u>

**TOWNSHIP OF LAWRENCE
COUNTY OF MERCER, STATE OF NEW JERSEY**

A-13

**CURRENT FUND
STATEMENT OF DEFERRED CHARGES – SPECIAL EMERGENCY 40A:4-55
Year Ended December 31, 2015**

		<u>Balance - December 31, 2014</u>	<u>Amount Resulting From 2015</u>	<u>Reduced By Budget</u>	<u>Balance - December 31, 2015</u>
Revaluation Program	09/04/12	\$ 480,000.00	\$ -	\$ 160,000.00	\$ 320,000.00
		<u>\$ 480,000.00</u>	<u>\$ -</u>	<u>\$ 160,000.00</u>	<u>\$ 320,000.00</u>
	<u>Reference</u>	A			A

**TOWNSHIP OF LAWRENCE
COUNTY OF MERCER, STATE OF NEW JERSEY**

B

**TRUST FUNDS
STATEMENT OF ASSETS, LIABILITIES, RESERVES AND FUND BALANCE
Year Ended December 31, 2015**

	Animal Control Fund		Trust Funds - Other		Housing & Community Development		Self-Insurance	
	2015	2014	2015	2014	2015	2014	2015	2014
ASSETS								
Cash and Cash Equivalents	\$ 79,802.05	\$ 62,081.00	\$ 10,380,243.34	\$ 21,079,072.67	\$ -	\$ 10,833.40	\$ 1,737,855.68	\$ 1,662,038.23
Due from Developer - Interest	-	-	-	-	-	-	-	-
Receivables and Other Assets	-	-	-	6,670.97	-	1,289.00	-	-
	<u>\$ 79,802.05</u>	<u>\$ 62,081.00</u>	<u>\$ 10,380,243.34</u>	<u>\$ 21,085,743.64</u>	<u>\$ -</u>	<u>\$ 12,122.40</u>	<u>\$ 1,737,855.68</u>	<u>\$ 1,662,038.23</u>
LIABILITIES, RESERVES AND FUND BALANCE								
Reserve for Animal Control	\$ 79,802.05	\$ 62,065.40	\$ -	\$ -	\$ -	\$ -	\$ -	\$ -
Due to Current Fund	-	-	48,119.87	143,221.23	-	-	-	-
Encumbrances Payable	-	-	152,540.15	136,622.10	-	-	-	-
Payroll Deduction Payable	-	-	1,121.68	-	-	-	-	-
Reserve and Other Deposits	-	-	6,140,452.35	18,008,077.48	B-1	-	-	-
Reserve for Interest Earned	-	-	-	-	-	94.67	-	-
Due to State of NJ - Dept. of Health	-	15.60	-	-	-	-	-	-
Due to HUD	-	-	-	-	-	2,030.51	-	-
Reserve for Collector's Trust	-	-	2,149,379.84	1,596,579.84	-	-	-	-
Reserve for Municipal Open Space	-	-	1,888,629.45	1,201,242.99	-	-	-	-
Reserve for Self-Insurance	-	-	-	-	-	-	1,737,855.68	1,662,038.23
Reserve for Life Grants	-	-	-	-	-	8,321.82	-	-
Reserve for Small Cities	-	-	-	-	-	1,675.40	-	-
	<u>\$ 79,802.05</u>	<u>\$ 62,081.00</u>	<u>\$ 10,380,243.34</u>	<u>\$ 21,085,743.64</u>	<u>\$ -</u>	<u>\$ 12,122.40</u>	<u>\$ 1,737,855.68</u>	<u>\$ 1,662,038.23</u>

		December 31,	
		2015	2014
ASSETS			
Cash and Equivalents		\$ 12,197,901.07	\$ 22,814,025.30
Due from Developer - Interest		-	-
Receivables and Other Assets		-	7,959.97
		<u>\$ 12,197,901.07</u>	<u>\$ 22,821,985.27</u>
LIABILITIES, RESERVES AND FUND BALANCE			
Animal Control	B-2	\$ 79,802.05	\$ 62,065.40
Due to Current	A	48,119.87	143,221.23
Encumbrances Payable		152,540.15	136,622.10
Payroll Deduction Payable		1,121.68	-
Reserve and Other Deposits	B-1	6,140,452.35	18,008,077.48
Reserve for Interest Earned		-	94.67
Due to State of NJ - Dept. of Health		-	15.60
Due to HUD		-	2,030.51
Reserve for Collector's Trust		2,149,379.84	1,596,579.84
Reserve for Municipal Open Space	B-3	1,888,629.45	1,201,242.99
Reserve for Self-Insurance	B-1	1,737,855.68	1,662,038.23
Reserve for Life Grants		-	8,321.82
Reserve for Small Cities		-	1,675.40
		<u>\$ 12,197,901.07</u>	<u>\$ 22,821,985.27</u>

**TOWNSHIP OF LAWRENCE
COUNTY OF MERCER, STATE OF NEW JERSEY**

B-1

**TRUST FUNDS
SCHEDULE OF OTHER RESERVES AND SPECIAL DEPOSITS
Year Ended December 31, 2015**

	Balance December 31, 2014	Receipts	Disbursements	Balance December 31, 2015
Trust - Other Funds				
Unemployment Fund	\$ 401,441.30	\$ 99,730.54	\$ 32,374.27	\$ 468,797.57
Accumulated Sick Fund/LOSAP	232,781.11	40,023.67	81,489.46	191,315.32
Performance Bond/Lease Deposit	-	-	-	-
Green Acres	700.00	-	-	700.00
Senior Citizens Recreation	21,558.20	4,013.90	2,235.95	23,336.15
Restoration Historic Sites	10,010.00	-	-	10,010.00
Disposition of Forfeited Property	84,828.36	38,097.22	87,504.55	35,421.03
Adopt a Cop	4,806.07	100.00	526.19	4,379.88
Recycling	19,298.97	55,972.53	47,944.28	27,327.22
Escrow/Developers' Interest	4,319.09	-	-	4,319.09
Parking Adjudication	4,299.72	80.00	740.00	3,639.72
Tobacco Fines	-	-	-	-
Public Defender	11,822.05	48,439.00	52,313.61	7,947.44
Fire Penalties	5,771.59	-	-	5,771.59
Snow Removal	56,492.56	278,284.65	181,906.62	152,870.59
Cash Bonds	15,069,192.30	8,060,143.35	20,223,145.86	2,906,189.79
Site Plan Review	176,898.56	212,983.46	202,401.37	187,480.65
Site Plan Inspection	1,358,808.40	352,109.61	139,057.48	1,571,860.53
Reserve for Fireworks	4,651.40	25,168.95	13,755.97	16,064.38
Reserve for Carson Road Woods	182.00	-	-	182.00
Reserve for Recreation League Fees	22,274.83	1,575.00	2,624.94	21,224.89
Reserve for Police Special Duty	118,430.81	349,468.84	328,294.14	139,605.51
Reserve for Joseph Gontel	-	-	-	-
Reserve for Shade Tree	2,400.00	-	-	2,400.00
Reserve for Activities - Ded by Rider	-	-	-	-
COAH	397,110.16	169,665.95	207,167.11	359,609.00
Subtotal Trust - Other *	<u>18,008,077.48</u>	<u>9,735,856.67</u>	<u>21,603,481.80</u>	<u>6,140,452.35</u>
	Reference B			B
Self-Insurance Fund				
Self-Insurance	1,662,038.23	319,685.54	243,868.09	1,737,855.68
	Reference B			B
Housing & Comm. Development				
Small Cities	1,675.40	-	1,675.40	-
Life Grants	8,321.82	2,513.09	10,834.91	-
Subtotal Housing & Comm. Dev.	<u>9,997.22</u>	<u>2,513.09</u>	<u>12,510.31</u>	<u>-</u>
	<u>\$ 19,680,112.93</u>	<u>\$ 10,058,055.30</u>	<u>\$ 21,859,860.20</u>	<u>\$ 7,878,308.03</u>

* Opening Balance, January 1, 2014 per B

Funds itemized above	\$ 18,008,077.48
Reserve for Collector's Trust included	2,149,379.84
Other Adjustments (Net)	(14,017,004.97)
	<u>\$ 6,140,452.35</u>
	Reference B

**TOWNSHIP OF LAWRENCE
COUNTY OF MERCER, STATE OF NEW JERSEY**

B-2

TRUST FUNDS – ANIMAL CONTROL FUND
SCHEDULE OF RESERVE FOR DOG FUND EXPENDITURES
Year Ended December 31, 2015

	<u>Reference</u>	
Balance - December 31, 2014	B	\$ 62,065.40
Increased by		
Animal control fees		\$ 41,791.06
Interest earnings		34.69
		<u>41,825.75</u>
		103,891.15
Decreased by		
Expenditures under R.S. 4:19-15.11		24,070.01
Other expenditures		19.09
		<u>24,089.10</u>
Balance - December 31, 2015	B	<u><u>\$ 79,802.05</u></u>
License Fees Collected		
		2013 \$ 39,299.05
		2014 40,503.00
		<u><u>\$ 79,802.05</u></u>

Note: R.S. 4:19-15.11

"... there shall be transferred from such special account to the general funds of the municipality any amount then in such account which is in excess of the total amount paid into said special account during the last two fiscal years next preceding."

**TOWNSHIP OF LAWRENCE
COUNTY OF MERCER, STATE OF NEW JERSEY**

B-3

TRUST FUNDS – OTHER
SCHEDULE OF RESERVE FOR MUNICIPAL OPEN SPACE
Year Ended December 31, 2015

	<u>Reference</u>	
Balance - December 31, 2014	B	\$ 1,201,242.99
Increased by		
Tax Levy	\$ 1,360,656.00	
Added Taxes	4,038.88	
Interest Earnings	487.14	
Other Reimbursements and Transfers	<u>6,030.28</u>	
		<u>1,371,212.30</u>
		2,572,455.29
Decreased by		
Share of debt principal payment	236,206.01	
Other expenses	<u>447,619.83</u>	
		<u>683,825.84</u>
Balance - December 31, 2015	B	<u><u>\$ 1,888,629.45</u></u>

**TOWNSHIP OF LAWRENCE
COUNTY OF MERCER, STATE OF NEW JERSEY**

C

**GENERAL CAPITAL FUND
STATEMENT OF ASSETS, LIABILITIES, RESERVES AND FUND BALANCE**

ASSETS	Reference	December 31,	
		2015	2014
Cash and Cash Equivalents	C-2	\$ 4,592,181.64	\$ 6,309,828.77
State and Federal Grants Receivable	C-2, C-3	1,508,750.34	1,679,569.39
Loan Proceeds Receivable	C-2, C-12	4,905.00	4,905.00
Deferred Charges to Future Taxation:			
Funded	C-4	11,162,100.60	13,866,070.14
Unfunded	C-5	16,618,625.96	16,786,592.96
		<u>\$ 33,886,563.54</u>	<u>\$ 38,646,966.26</u>
LIABILITIES, RESERVES AND FUND BALANCE			
Serial Bonds	C-7	\$ 10,765,000.00	\$ 13,300,000.00
Bond Anticipation Notes	C-5, C-10	9,625,000.00	9,270,000.00
Other Liabilities and Reserves:			
Green Trust Loan Payable	C-9	277,043.07	375,353.65
NJ Infrastructure Loan Payable	C-8	120,057.53	190,716.49
Reserve for Encumbrances	C-2	1,512,992.63	2,449,710.03
Reserve for Interest		83.36	-
Reserve for:			
Municipal Improvements	C-2, C-14	2,199,954.16	2,215,971.31
Sidewalk Repairs	C-2, C-15	223,977.75	227,657.89
Payment for Future Debt Service Costs	C-2, C-18	746,797.55	582,897.55
State and Federal Grants	C-2, C-17	50,410.69	50,410.69
Reserve for Payment of Debt -- Ordinance 1905-06	C-2, C-19	33,984.22	33,984.22
Capital Improvement Fund	C-2, C-11	97,641.05	75,641.05
Transportation Trust Fund	C-2, C-16	242,871.25	242,871.25
Trash Carts	C-2	64,471.86	63,721.86
Improvement Authorizations:			
Unfunded	C-6	5,473,262.83	7,045,629.17
Funded	C-6	2,032,889.99	1,987,275.50
Fund Balance	C-1	<u>420,125.60</u>	<u>535,125.60</u>
		<u>\$ 33,886,563.54</u>	<u>\$ 38,646,966.26</u>

There were Bonds and Notes Authorized but not Issued at December 31, 2015 and 2014, in the amount of \$6,993,625.96 and \$7,516,592.96, respectively. (C-13)

**TOWNSHIP OF LAWRENCE
COUNTY OF MERCER, STATE OF NEW JERSEY**

C-1

GENERAL CAPITAL FUND
STATEMENT OF CHANGES IN FUND BALANCE
Year Ended December 31, 2015

	<u>Reference</u>		
Balance - December 31, 2014	C	\$	535,125.60
Decreased by:			
Payment to Current Fund as Anticipated Revenue		\$	60,000.00
Improvement Authorizations Funded			<u>55,000.00</u>
			<u>115,000.00</u>
Balance - December 31, 2015	C	\$	<u>420,125.60</u>

**TOWNSHIP OF LAWRENCE
COUNTY OF MERCER, STATE OF NEW JERSEY**

C-2

**GENERAL CAPITAL FUND
ANALYSIS OF GENERAL CAPITAL CASH AND CASH EQUIVALENTS
Year Ended December 31, 2015**

	<u>Reference</u>	Balance (Deficit) <u>December 31, 2015</u>
Fund Balance	C	\$ 420,125.60
Capital Improvement Fund	C	97,641.05
Reserve for Encumbrances	C	1,512,992.63
State and Federal Grants Receivable	C	(1,508,750.34)
Res. for Payment of Future Debt Services	C	746,797.55
Res. for Sidewalk Repairs	C	223,977.75
Res. for Municipal Improvements	C	2,199,954.16
Res. for State and Federal Grants	C	50,410.69
Res. For Payment of Debt	C	33,984.22
Res. For Trash Carts	C	64,471.86
Loan Proceeds Receivable	C	(4,905.00)
Reserve for Transportation Trust Fund	C	242,871.25
Reserve for Interest	C	83.36
Ordinance		
<u>Number</u>	<u>Improvement Description</u>	
1475	Purch of School Site	253,836.00
1572-99	Municipal Bldg Renovations	81,139.52
1667-01	Carson Road Woods (1678-01)	(50,410.39)
1714-02	Acq. of Helen Ave	(129.44)
1845-05	Sidewalk Improvements	34,249.46
1852-05	Purchase of Public Works Equipment	23,088.66
1852-05	Acquisition of Various Computer & Office Equip	20,475.67
1852-05	Acquisition of Public Safety Equipment	3,276.10
1852-05	Communication Equipment	8,895.99
1852-05	Purchase of Various Park Maintenance Equip	31,838.11
1884-06	Various Road Improvements (2) Projects	80,701.15
1887-06	Purchase of Public Works Equipment	8,281.55
1894-06	Purchase of Equipment	47,641.41
1894-06	Municipal Building Improvements	23,087.01
1894-06	Acquisition of Fire Equipment	4,077.86
1894-06	Purchases of Computer & Office Equipment	3,031.22
1894-06	Public Safety Equipment	4,376.00
1894-06	Communication Equipment	12,000.00
1929-07	Improvements of Roads	106,521.54
1933-07	Improvements of Roads	202,808.87
1940-07	Various Improvements or Purposes	
	1 Purchase of Public Works Equipment	49,901.93
	2 Improvement to Municipal Buildings	83,793.76
	3 Renovations and Construction of Town Hall	62,763.21
	4 Acquisition of Fire Rescue Equipment	4,897.54
	5 Acquisition of Fire Apparatus & Equipment	13,029.96
	6 Acquisition of Various Computer & Office Equip	11,573.59
	7 Acquisition of Public Safety Equipment	55,288.54
	8 Acquisition of Communication Equipment	1,834.39
	9 Improvements to Various Parks & Recreation	45,447.36

**TOWNSHIP OF LAWRENCE
COUNTY OF MERCER, STATE OF NEW JERSEY**

C-2

**GENERAL CAPITAL FUND
ANALYSIS OF GENERAL CAPITAL CASH AND CASH EQUIVALENTS (CONTINUED)
Year Ended December 31, 2015**

Ordinance Number	Improvement Description	Balance (Deficit) December 31, 2015
1959-07	Building and Renovation of Restroom Facilities on Recreation Sites	67,267.00
1973-08	Milling and Overlay of Princeton Pike	24,853.11
1977-08	Various Road Improvements	105,203.40
1978-08	Various Capital Improvements	
	1 Purchase of Various Public Works Equipment	11,754.32
	2 Improvements to Municipal Building	22,604.22
	3 Acquisition of Fire/Rescue Equipment	9,027.58
	4 Acquisition of Various Computer and Office Equipment	(44,328.72)
	5 Acquisition of Public Safety Equipment	1,368.55
	6 Communication Equipment	(21,550.26)
	7 Various Park and Recreational Facility Improvements	4,820.62
2025-09	Dyson Tract Remediation	376,752.66
2020-09	Various Capital Improvements	
2031-09	1 Purchase of Various Public Works Equipment	16,335.80
	2 Improvements to Municipal Building	92,635.55
	3 Acquisition of Fire/Rescue Equipment	201.00
	4 Acquisition of Various Computer and Office Equipment	1,738.12
	5 Hydraulic Lift, Pickup Truck & Electric Lift Gate	1,043.00
2021-09	Various Road Improvements	83,695.47
2022-09	Reappropriated for Resurfacing and Milling Lombard Avenue	17,723.36
2052-10	Various Capital Improvements	
	Purchase of Various Public Works Equipment	46,254.51
	Improvements to Municipal Building	28,235.15
	Acquisition of Fire/Rescue Equipment	214.00
	Acquisition of Various Computer and Office Equipment	4,013.41
2060-10	Funding of Emergency Appropriation Tax Appeals	20,838.87
2069-10	Major Repair of Colonial Lake Dam	(54,130.31)
2095-11	Various Capital Improvements	
	Purchase of Various Public Works Equipment	826.26
	Improvements to Municipal Building	10,937.85
	Acquisition of Fire/Rescue Equipment	7,461.30
	Acquisition of Fire Truck	(475,069.21)
	Acquisition of Various Computer and Office Equipment	17,000.00
	Various Park and Recreational Facility Equipment	4,997.84
2108-11	Road Repair - Quakerbridge Road & Providence Line Road	(8,767.39)
2127-12	Improvements to Municipal Building	15,500.00
2127-12	Acquisition of Fire/Rescue Equipment	12,423.66
2127-12	Acquisition of Fire Apparatus	6,565.56
2127-12	Acquisition of Various Computer and Office Equipment	21,000.00
2128-12	Various Road Improvements	8,357.39
2156-13	Various Capital Improvements	
	Purchase of Various Public Works Equipment	18,528.86
	Improvements to Municipal Building	127,643.89
	Acquisition of Fire/Rescue Equipment	40,091.50
	Acquisition of Fire Apparatus	52,203.53
	Acquisition of Various Communications Equipment	31,727.15

**TOWNSHIP OF LAWRENCE
COUNTY OF MERCER, STATE OF NEW JERSEY**

C-2

GENERAL CAPITAL FUND
ANALYSIS OF GENERAL CAPITAL CASH AND CASH EQUIVALENTS (CONTINUED)
Year Ended December 31, 2015

Ordinance Number	Improvement Description	Balance (Deficit) December 31, 2015
2156-13	Acquisition of Various Computer and Office Equipment	18,906.38
	Various Park and Recreational Facility Equipment	50,718.02
	Acquisition of Various Public Safety Equipment	1,282.65
2157-13	Various Road Improvements	4,568.74
2083-14	Acquisition of Police Vehicle In-Car Video System	4,843.00
2186-14	Various Capital Improvements	
	Purchase of Various Public Works Equipment	(57,352.82)
	Improvements to Municipal Building	(209,108.58)
	Acquisition of Fire/Rescue Equipment	21,664.30
	Acquisition of Various Computer and Office Equipment	(80,282.17)
	Various Park and Recreational Facility Equipment	(84,117.50)
2187-14	Various Road Improvements	108,159.27
2188-14	Emergency Medical Services Building	615.83
2208-15	Various Road Improvements	(590,916.66)
2211-15	Various Capital Improvements	
	Purchase of Various Public Works Equipment	(339,735.55)
	Improvements to Municipal Building	(115,646.12)
	Acquisition of Fire/Rescue Equipment	(93,042.31)
	Acquisition of Fire Apparatus	15,400.00
	Acquisition of Various Communication Equipment	(39,056.77)
	Acquisition of Various Computer and Office Equipment	159,120.05
	Various Park and Recreational Facility Improvements	15,325.00
	Acquisition of Various Public Safety Equipment	(78,382.28)
2214-15	Various Road Improvements	(140,970.28)
2215-15	Energy EFT Retrofit Measures	5,219.49
		\$ 4,592,181.64
		C

**TOWNSHIP OF LAWRENCE
COUNTY OF MERCER, STATE OF NEW JERSEY**

C-3

**GENERAL CAPITAL FUND
SCHEDULE OF STATE AND FEDERAL GRANTS RECEIVABLE
Year Ended December 31, 2015**

		Balance December 31, 2014	Collected	Balance December 31, 2015
1984 New Jersey Transportation Trust Fund Authority Act:				
Princeton Road Bikeway		\$ 6,046.54	\$ -	\$ 6,046.54
Princeton Pike, Bikepath-2		22,031.65	-	22,031.65
Acquisition of Carson Road Woods		50,410.69	-	50,410.69
Acquisition of Loveless Tree Farm -- Ordinance 1905-06:				
DEP -- Green Trust Program	1905-06	7,984.24	-	7,984.24
Improvements of Roads -- Ord # 1933-07	1933-07	15,685.43	-	15,685.43
Various Improvements or Purposes -- Ord # 1940-07	1940-07	128,495.00	-	128,495.00
Milling and Overlay of Princeton Pike	1973-08	85,000.00	-	85,000.00
New Jersey Transportation Trust -- Twin Meadows	2021-09	25,237.94	-	25,237.94
NJ Department of Environmental Protection	2025-09	1,032,380.40	-	1,032,380.40
NJ DOT 2012 ORDINANCE # 2128-12	2128-12	30,000.00	-	30,000.00
NJ DOT 2013 ORDINANCE # 2157-13 - Province Line Rd	2157-13	56,297.50	5,819.05	50,478.45
NJ DOT 2014 ORDINANCE # 2187-14	2187-14	<u>220,000.00</u>	<u>165,000.00</u>	<u>55,000.00</u>
		<u>\$ 1,679,569.39</u>	<u>\$ 170,819.05</u>	<u>\$ 1,508,750.34</u>
	<u>Ref.</u>	C		C

**TOWNSHIP OF LAWRENCE
COUNTY OF MERCER, STATE OF NEW JERSEY**

C-4

GENERAL CAPITAL FUND
SCHEDULE OF DEFERRED CHARGES TO FUTURE TAXATION – FUNDED
Year Ended December 31, 2015

	<u>Ref.</u>		
Balance - December 31, 2014	C		\$ 13,866,070.14
Decreased By Payments:			
Serial Bonds	C-7	\$ 2,535,000.00	
Green Trust Loans	C-9	98,310.58	
Environmental Infrastructure Trust	C-8	<u>70,658.96</u>	
			<u>2,703,969.54</u>
Balance - December 31, 2015	C		<u>\$ 11,162,100.60</u>
PROOF :			
Serial Bonds	C-7	\$ 10,765,000.00	
NJ Infrastructure Trust Loan	C-8	120,057.53	
Green Trust Loan	C-9	<u>277,043.07</u>	
	C		<u>\$ 11,162,100.60</u>

**TOWNSHIP OF LAWRENCE
COUNTY OF MERCER, STATE OF NEW JERSEY**

**GENERAL CAPITAL FUND
SCHEDULE OF DEFERRED CHARGES - UNFUNDED
Year Ended December 31, 2015**

Ordinance Number	Improvement Description	Balance Dec 31, 2014	2015 Authorizations	2015 Bond Anticipation Notes Paid	Cancelled Authorizations	Balance Dec 31, 2015	Analysis of Balance		
							Financed By Bond Anticipation Notes	Expenditures	Improvement Authorizations Unfunded
1420B	Princess Road phase I	10,000.00	-	-	-	10,000.00	10,000.00	-	-
1421C	Park improvements	20,942.00	-	-	-	20,942.00	20,942.00	-	-
1449A	Reconstr. Princess Road	19,438.00	-	-	-	19,438.00	19,438.00	-	-
1572-99	Police & Fire Communication equip	23,000.00	-	-	-	23,000.00	23,000.00	-	-
1572-99	Tree replacement program	570.00	-	-	-	570.00	570.00	-	-
1572-99	Municipal Bldg renovations	246,100.00	-	-	-	246,100.00	-	-	246,100.00
1572-99	Park Maint. Equipment	69,700.00	-	-	-	69,700.00	69,700.00	-	-
1667/1678-01	Carson Road Woods	595,555.64	-	6,900.57	-	588,655.07	538,244.68	47,735.39	2,675.00
1714-02	Acquisition of Helen Avenue	152,000.00	-	1,917.94	-	150,082.06	149,599.06	-	483.00
1749-03	Road improvements	139,485.00	-	15,498.33	-	123,986.67	123,986.67	-	-
1973-08	Milling and Overlay of Princeton Pike	123,250.00	-	-	-	123,250.00	-	-	123,250.00
1977-08	Various Road Improvements	18,875.00	-	-	-	18,875.00	-	-	18,875.00
	Various Capital Improvements								
2	Improvements to Municipal Building	531,950.00	-	-	-	531,950.00	-	-	531,950.00
4	Acquisition of Various Computer and Office Equipment	50,389.07	-	-	-	50,389.07	-	37,607.90	12,781.17
6	Communication Equipment	31,825.00	-	-	-	31,825.00	-	21,550.26	10,274.74
2025-09	Dyson Tract Remediation	1,165,000.00	-	-	-	1,165,000.00	-	-	1,165,000.00
2020-09	Various Capital Improvements								
1	Purchase of Various Public Works Equipment	24,193.16	-	24,193.16	-	0.00	-	-	-
2	Improvements to Municipal Building	147,094.90	-	147,094.90	-	0.00	-	-	-
3	Acquisition of Fire/Rescue Equipment	52,250.00	-	52,250.00	-	-	-	-	-
4	Acquisition of Various Computer and Office Equipment	66,500.00	-	66,500.00	-	-	-	-	-
5	Hydraulic Lift, Pickup Truck & Electric Lift Gate	71,250.00	-	71,250.00	-	-	-	-	-
2021-09	Various Road Improvements	680,200.00	-	280,707.86	-	399,492.14	399,492.14	-	-
2035-09	Refunding Bonds	675,000.00	-	-	675,000.00	-	-	-	-
2051-10	Various Road Improvements	731,389.84	-	20,308.08	83,075.83	628,005.93	628,005.93	-	-
2052-10	Various Capital Improvements								
	Purchase of Various Public Works Equipment	184,481.46	-	56,909.27	13,618.00	113,954.19	113,954.19	-	-
	Improvements to Municipal Building	281,960.00	-	-	436.30	281,523.70	281,523.70	-	-
	Acquisition of Fire/Rescue Equipment	227,525.00	-	-	-	227,525.00	227,525.00	-	-
	Acquisition of Various Computer and Office Equipment	29,450.00	-	-	-	29,450.00	29,450.00	-	-
	Acquisition of Public Safety Equipment	11,875.00	-	-	287.84	11,587.16	11,587.16	-	-
	Various Park and Recreational Facility Equipment	163,875.00	-	-	-	163,875.00	163,875.00	-	-
2057-10	Refunding of Callable Improvement Bonds	905,000.00	-	-	905,000.00	-	-	-	-
2069-10	Major Repair of Colonial Lake Dam	480,918.50	-	-	-	480,918.50	-	13,118.50	467,800.00
2095-11	Various Capital Improvements								
	Purchase of Various Public Works Equipment	365,593.77	-	44,331.23	24,012.93	297,249.61	284,486.32	12,763.29	-
	Improvements to Municipal Building	97,470.00	-	-	7,707.86	89,762.14	97,470.00	(7,707.86)	-
	Acquisition of Fire/Rescue Equipment	106,020.00	-	-	1,954.60	104,065.40	106,020.00	(1,954.60)	-
	Acquisition of Fire Truck	493,050.00	-	-	-	493,050.00	-	-	493,050.00
	Acquisition of Various Computer and Office Equipment	47,500.00	-	-	3,100.83	44,399.17	47,500.00	(3,100.83)	-
	Various Park and Recreational Facility Equipment	4,940.00	-	-	-	4,940.00	4,940.00	-	-
2096-11	Twin Pines Parking/recreational Facility Improvements	144,400.00	-	3,800.00	-	140,600.00	140,600.00	-	-
2097-11	Bergen Street Reconstruction	735,884.62	-	19,365.38	84,827.08	631,692.16	631,692.16	-	-
2108-11	Road Repair - Quakerbridge Road & Providence Line Road	47,500.00	-	-	-	47,500.00	-	-	47,500.00
2116-12	Refunding of Callable Improvement Bonds	130,000.00	-	-	130,000.00	-	-	-	-
2127-12	Various Capital Improvements								
	Purchase of Various Public Works Equipment	465,500.00	-	-	23,055.84	442,444.16	442,444.16	-	-
	Improvements to Municipal Building	52,250.00	-	-	-	52,250.00	52,250.00	-	-
	Acquisition of Fire/Rescue Equipment	161,215.00	-	-	-	161,215.00	161,215.00	-	-
	Acquisition of Fire Apparatus	451,250.00	-	-	-	451,250.00	451,250.00	-	-
	Acquisition of Various Communications Equipment	205,010.00	-	-	9,802.63	195,207.37	195,207.37	-	-
	Acquisition of Various Computer and Office Equipment	121,125.00	-	-	4,385.54	116,739.46	116,739.46	-	-
	Various Park and Recreational Facility Equipment	14,250.00	-	-	-	14,250.00	14,250.00	-	-

**TOWNSHIP OF LAWRENCE
COUNTY OF MERCER, STATE OF NEW JERSEY**

**GENERAL CAPITAL FUND
SCHEDULE OF DEFERRED CHARGES – UNFUNDED (CONTINUED)
Year Ended December 31, 2015**

Ordinance Number	Improvement Description	Balance Dec 31, 2014	2015 Authorizations	2015 Bond Anticipation Notes Paid	Cancelled Authorizations	Balance Dec 31, 2015	Analysis of Balance		
							Financed By Bond Anticipation Notes	Expenditures	Improvement Authorizations Unfunded
2128-12	Various Road Improvements	555,750.00	-	-	-	555,750.00	555,750.00	-	-
2156-13	Various Capital Improvements								
	Purchase of Various Public Works Equipment	365,750.00	-	-	-	365,750.00	365,750.00	-	-
	Improvements to Municipal Building	342,000.00	-	-	-	342,000.00	342,000.00	-	-
	Acquisition of Fire/Rescue Equipment	89,300.00	-	-	-	89,300.00	89,300.00	-	-
	Acquisition of Fire Apparatus	128,250.00	-	-	-	128,250.00	128,250.00	-	-
	Acquisition of Various Computer and Office Equipment	121,125.00	-	-	-	121,125.00	121,125.00	-	-
2179-14	Construction of a Salt Domeby	518,700.00	-	-	-	518,700.00	518,700.00	-	-
2183-14	Acquisition of Police Vehicle In-Car Video System	118,750.00	-	-	-	118,750.00	118,750.00	-	-
2186-14	Various Capital Improvements								
	Improvements to Municipal Building	308,750.00	-	-	-	308,750.00	-	-	308,750.00
	Various Park and Recreational Facility Equipment	191,900.00	-	-	-	191,900.00	-	-	191,900.00
2187-14	Various Road Improvements	689,842.00	-	-	-	689,842.00	689,842.00	-	-
2208-15	Various Road Improvements	-	1,035,500.00	-	-	1,035,500.00	-	-	1,035,500.00
2211-15	Various Capital Improvements								
	Purchase of Various Public Works Equipment	-	351,500.00	-	-	351,500.00	-	-	351,500.00
	Improvements to Municipal Building	-	261,725.00	-	-	261,725.00	-	-	261,725.00
	Acquisition of Fire/Rescue Equipment	-	101,863.75	-	-	101,863.75	-	-	101,863.75
	Acquisition of Various Communication Equipment	-	40,311.25	-	-	40,311.25	-	-	40,311.25
	Acquisition of Various Public Safety Equipment	-	92,150.00	-	-	92,150.00	-	-	92,150.00
2214-15	Various Road Improvements	-	142,500.00	-	-	142,500.00	-	-	142,500.00
		<u>\$ 16,786,592.96</u>	<u>\$ 2,611,340.00</u>	<u>\$ 811,026.72</u>	<u>\$ 1,966,265.28</u>	<u>\$ 16,618,625.96</u>	<u>\$ 9,625,000.00</u>	<u>\$ 120,012.05</u>	<u>\$ 6,873,613.91</u>
Ref.		C	C-6		C-6	C	C, C-10		

**TOWNSHIP OF LAWRENCE
COUNTY OF MERCER, STATE OF NEW JERSEY**

C-6

**GENERAL CAPITAL FUND
SCHEDULE OF IMPROVEMENT AUTHORIZATIONS
Year Ended December 31, 2015**

Ordinance Number	Improvement Description	Ordinance Date	Ordinance Amount	Balance December 31, 2014		2015 Authorizations			12/31/2014 Encumbered	Paid or Charged	Authorization Cancelled	Balance December 31, 2015	
				Funded	Unfunded	Deferred Charges Unfunded	Capital Improvement Fund	Capital Fund Balance/ Reserve				Funded	Unfunded
1475	Purch of School Site	12/15/1996	\$ 253,836.00	\$ 253,836.00	\$ -	\$ -	\$ -	\$ -	\$ -	\$ -	\$ -	\$ 253,836.00	\$ -
1572-99	Municipal Bldg Renovations	4/6/1999	538,000.00	-	327,239.52	-	-	-	-	-	-	-	327,239.52
1714-02	Acq. of Helen Ave Municipal Building	9/3/2002	320,000.00	-	353.56	-	-	-	-	-	-	-	353.56
		5/3/2005	1,200,000.00	-	-	-	-	-	113.11	113.11	-	-	-
1845-05	Sidewalk Improvements	5/3/2005	75,000.00	34,249.46	-	-	-	-	-	-	-	34,249.46	-
1852-05	Purchase of Public Works Equipment	5/17/2005	230,000.00	23,088.66	-	-	-	-	-	-	-	23,088.66	-
1852-05	Acquisition of Various Computer & Office Equip	5/17/2005	265,000.00	23,015.14	-	-	-	5,000.00	7,539.47	-	-	20,475.67	-
1852-05	Acquisition of Public Safety Equipment	5/17/2005	20,000.00	3,276.10	-	-	-	-	-	-	-	3,276.10	-
1852-05	Communication Equipment	5/17/2005	38,000.00	8,895.99	-	-	-	-	-	-	-	8,895.99	-
1852-05	Purchase of Various Park Maintenance Equip	5/17/2005	160,000.00	31,838.11	-	-	-	-	-	-	-	31,838.11	-
1884-06	Various Road Improvements (2) Projects	-	-	80,701.15	-	-	-	-	-	-	-	80,701.15	-
1887-06	Purchase of Public Works Equipment	-	-	8,281.55	-	-	-	-	-	-	-	8,281.55	-
1894-06	Purchase of Equipment	-	-	47,641.41	-	-	-	-	-	-	-	47,641.41	-
1894-06	Municipal Building Improvements	-	-	23,087.01	-	-	-	424.57	424.57	-	-	23,087.01	-
1894-06	Acquisition of Fire Equipment	-	-	4,077.86	-	-	-	-	-	-	-	4,077.86	-
1894-06	Purchases of Computer & Office Equipment	-	-	3,031.22	-	-	-	-	-	-	-	3,031.22	-
1894-06	Public Safety Equipment	-	-	4,376.00	-	-	-	-	-	-	-	4,376.00	-
1894-06	Communication Equipment	-	-	12,000.00	-	-	-	-	-	-	-	12,000.00	-
1929-07	Improvements of Roads	5/15/2007	355,000.00	106,521.54	-	-	-	-	-	-	-	106,521.54	-
1933-07	Improvements of Roads	5/15/2007	706,000.00	202,808.87	-	-	-	-	-	-	-	202,808.87	-
1940-07	Various Improvements or Purposes												
1	Purchase of Public Works Equipment	6/19/2007	280,000.00	49,901.93	-	-	-	-	-	-	-	49,901.93	-
2	Improvement to Municipal Buildings	6/19/2007	316,000.00	83,793.76	-	-	-	-	-	-	-	83,793.76	-
3	Renovations and Construction of Town Hall	6/19/2007	850,000.00	114,487.21	-	-	-	7,812.63	59,536.63	-	-	62,763.21	-
4	Acquisition of Fire Rescue Equipment	6/19/2007	100,000.00	4,897.54	-	-	-	-	-	-	-	4,897.54	-
5	Acquisition of Fire Apparatus & Equipment	6/19/2007	450,000.00	13,029.96	-	-	-	-	-	-	-	13,029.96	-
6	Acquisition of Various Computer & Office Equip	6/19/2007	95,000.00	11,573.59	-	-	-	-	-	-	-	11,573.59	-
7	Acquisition of Public Safety Equipment	6/19/2007	87,000.00	8,288.54	-	-	-	-	(47,000.00)	-	-	55,288.54	-
8	Acquisition of Communication Equipment	6/19/2007	10,000.00	1,834.39	-	-	-	-	-	-	-	1,834.39	-
9	Improvements to Various Parks & Recreation	6/19/2007	206,000.00	45,447.36	-	-	-	-	-	-	-	45,447.36	-
1959-07	Building and Renovation of Restroom Facilities on Recreation Sites	12/18/2007	250,000.00	67,267.00	-	-	-	-	-	-	-	67,267.00	-
1962-07	Purchase of Twin Pines Airport	12/18/2007	225,000.00	-	-	-	-	-	-	-	-	-	-
1966-08	Resurfacing and Milling of Princeton Pike	2/7/2008	263,951.62	-	-	-	-	-	-	-	-	-	-
1973-08	Milling and Overlay of Princeton Pike	3/18/2008	320,000.00	24,853.11	123,250.00	-	-	14,314.95	14,314.95	-	-	24,853.11	123,250.00
1977-08	Various Road Improvements	4/1/2008	776,450.00	105,203.40	18,875.00	-	-	6,200.73	6,200.73	-	-	105,203.40	18,875.00
1978-08	Various Capital Improvements												
1	Purchase of Various Public Works Equipment	4/1/2008	283,000.00	11,754.32	-	-	-	3,858.67	3,858.67	-	-	11,754.32	-
2	Improvements to Municipal Building	4/1/2008	1,007,000.00	-	554,554.22	-	-	225.97	225.97	-	-	-	554,554.22
3	Acquisition of Fire/Rescue Equipment	4/1/2008	101,000.00	9,027.58	-	-	-	-	-	-	-	9,027.58	-
4	Acquisition of Various Computer and Office Equipment	4/1/2008	54,000.00	-	6,060.35	-	-	-	-	-	-	-	6,060.35
5	Acquisition of Public Safety Equipment	4/1/2008	9,000.00	1,368.55	-	-	-	-	-	-	-	1,368.55	-
6	Communication Equipment	4/1/2008	33,500.00	-	10,274.74	-	-	-	-	-	-	-	10,274.74
7	Various Park and Recreational Facility Improvements	4/1/2008	171,000.00	4,820.62	-	-	-	11,806.29	11,806.29	-	-	4,820.62	-
1997-08	Engineering and Repair of Colonial Lake Dam	12/16/2008	18,034.05	-	-	-	-	63.94	63.94	-	-	-	-

**TOWNSHIP OF LAWRENCE
COUNTY OF MERCER, STATE OF NEW JERSEY**

**GENERAL CAPITAL FUND
SCHEDULE OF IMPROVEMENT AUTHORIZATIONS (CONTINUED)
Year Ended December 31, 2015**

Ordinance Number	Improvement Description	Ordinance Date	Amount	Balance December 31, 2014		2015 Authorizations			12/31/2014 Encumbered	Paid or Charged	Authorization Cancelled	Balance December 31, 2015	
				Funded	Unfunded	Deferred Charges Unfunded	Capital Improvement Fund	Capital Fund Balance/ Reserve				Funded	Unfunded
2025-09	Dyson Tract Remediation	8/11/2009	4,250,575.00	376,752.66	1,165,000.00	-	-	-	247.74	247.74	-	376,752.66	1,165,000.00
2020-09	Various Capital Improvements	6/4/2009	-	-	-	-	-	-	-	-	-	-	-
2031-09	1 Purchase of Various Public Works Equipment	9/15/2009	145,000.00	-	16,335.80	-	-	-	5,000.00	5,000.00	-	-	16,335.80
	2 Improvements to Municipal Building		475,000.00	-	92,635.55	-	-	-	8,917.37	8,917.37	-	-	92,635.55
	3 Acquisition of Fire/Rescue Equipment		55,000.00	-	201.00	-	-	-	-	-	-	-	201.00
	4 Acquisition of Various Computer and Office Equipment		70,000.00	-	1,738.12	-	-	-	-	-	-	-	1,738.12
	5 Hydraulic Lift, Pickup Truck & Electric Lift Gate		75,000.00	-	1,043.00	-	-	-	-	-	-	-	1,043.00
2021-09	Various Road Improvements	6/4/2009	1,224,000.00	-	207,588.08	-	-	-	123,719.98	247,612.59	-	-	83,695.47
2022-09	Reappropriated for Resurfacing and Milling Lombard Avenue	6/16/2009	25,000.00	17,723.36	-	-	-	-	-	-	-	17,723.36	-
2030-09	Payment of Amounts Owing for Taxes Levied	9/1/2009	5,225,000.00	-	-	-	-	-	-	-	-	-	-
2035-09	Refunding Bonds	11/5/2009	6,000,000.00	-	675,000.00	-	-	-	-	-	675,000.00	-	-
2040-09	Reappropriated for Repair of Colonial Lake Dam	12/15/2009	3,668.95	-	-	-	-	-	-	-	-	-	-
2051-10	Various Road Improvements:												
	Various Roads Improvement Program	5/18/2010	347,000.00	-	25,907.85	-	-	-	-	-	25,907.85	-	-
	Concrete Program	5/18/2010	425,200.00	57,086.58	-	-	-	-	-	-	57,086.58	-	-
	Striping	5/18/2010	30,000.00	-	-	-	-	-	80.00	-	80.00	-	-
	Lighted Crosswalks	5/18/2010	35,000.00	-	0.90	-	-	-	-	-	0.90	-	-
		5/18/2010	30,000.00	-	0.50	-	-	-	-	-	0.50	-	-
2052-10	Various Capital Improvements												
	Purchase of Various Public Works Equipment	5/18/2010	314,000.00	-	70,332.61	-	-	-	-	10,460.10	13,618.00	-	46,254.51
	Improvements to Municipal Building	5/18/2010	296,800.00	-	28,671.45	-	-	-	432.84	432.84	436.30	-	28,235.15
	Acquisition of Fire/Rescue Equipment	5/18/2010	239,500.00	-	994.00	-	-	-	-	780.00	-	-	214.00
	Acquisition of Various Computer and Office Equipment	5/18/2010	31,000.00	-	4,013.41	-	-	-	16,117.00	16,117.00	-	-	4,013.41
	Acquisition of Public Safety Equipment	5/18/2010	12,500.00	-	287.84	-	-	-	-	-	287.84	-	-
2057-10	Refunding of Callable Improvement Bonds	7/6/2010	3,200,000.00	-	905,000.00	-	-	-	-	-	905,000.00	-	-
2060-10	Funding of Emergency Appropriation Tax Appeals	8/3/2010	750,000.00	-	20,838.87	-	-	-	-	-	-	-	20,838.87
2069-10	Major Repair of Colonial Lake Dam	11/9/2010	506,230.00	-	426,788.19	-	-	-	-	-	-	-	426,788.19
2095-11	Various Capital Improvements	5/17/2011											
	Purchase of Various Public Works Equipment		431,500.00	-	30,512.93	-	-	-	-	5,673.74	24,012.93	-	826.26
	Improvements to Municipal Building		102,600.00	-	18,645.71	-	-	-	-	-	7,707.86	-	10,937.85
	Acquisition of Fire/Rescue Equipment		111,800.00	-	9,415.90	-	-	-	-	-	1,954.60	-	7,461.30
	Acquisition of Fire Truck		519,000.00	-	17,492.29	-	-	-	500,566.50	500,078.00	-	-	17,980.79
	Acquisition of Various Computer and Office Equipment		50,000.00	-	20,100.83	-	-	-	-	-	3,100.83	-	17,000.00
	Various Park and Recreational Facility Equipment		5,200.00	57.84	4,940.00	-	-	-	-	-	-	57.84	4,940.00
2097-11	5 Concrete Improvements	5/17/2011	1,045,000.00	-	82,209.93	-	-	-	2,617.15	-	84,827.08	-	-
2108-11	Road Repair - Quakerbridge Road & Providence Line Road	10/18/2011	50,000.00	-	38,732.61	-	-	-	-	-	-	-	38,732.61
2116-12	Refunding of Callable Improvement Bonds	2/21/2012	5,250,000.00	-	130,000.00	-	-	-	-	-	130,000.00	-	-
2127-12	Purchase of Various Public Works Equipment		490,000.00	-	27,355.84	-	-	-	-	4,300.00	23,055.84	-	(0.00)
2127-12	Improvements to Municipal Building		55,000.00	-	27,000.00	-	-	-	6,149.69	17,649.69	-	-	15,500.00
2127-12	Acquisition of Fire/Rescue Equipment		169,700.00	-	106,923.66	-	-	-	2,435.49	96,935.49	-	-	12,423.66
2127-12	Acquisition of Fire Apparatus		475,000.00	-	6,565.56	-	-	-	468,000.00	468,000.00	-	-	6,565.56
2127-12	Acquisition of Various Communications Equipment		215,800.00	-	9,802.63	-	-	-	-	-	9,802.63	-	-
2127-12	Acquisition of Various Computer and Office Equipment		127,500.00	-	25,385.54	-	-	-	2,440.50	2,440.50	4,385.54	-	21,000.00
2128-12	Various Road Improvements	7/17/2012	835,000.00	-	8,357.39	-	-	-	30,000.00	30,000.00	-	-	8,357.39
2156-13	Various Capital Improvements	5/21/2013											
	Purchase of Various Public Works Equipment		385,000.00	-	18,528.86	-	-	-	210,000.00	210,000.00	-	-	18,528.86
	Improvements to Municipal Building		360,000.00	-	129,742.96	-	-	-	182,250.00	184,349.07	-	-	127,643.89
	Acquisition of Fire/Rescue Equipment		94,000.00	-	40,091.50	-	-	-	-	-	-	-	40,091.50
	Acquisition of Fire Apparatus		135,000.00	-	52,203.53	-	-	-	82,673.00	82,673.00	-	-	52,203.53
	Acquisition of Various Communications Equipment		243,000.00	-	33,503.75	-	-	-	6,720.00	8,496.60	-	-	31,727.15
	Acquisition of Various Computer and Office Equipment		127,500.00	-	22,876.69	-	-	-	73,185.00	77,155.31	-	-	18,906.38
	Various Park and Recreational Facility Equipment		234,500.00	-	56,168.02	-	-	-	-	5,450.00	-	-	50,718.02
	Acquisition of Various Public Safety Equipment		31,000.00	-	1,282.65	-	-	-	-	-	-	-	1,282.65
2157-13	Various Road Improvements	5/21/2013	810,000.00	-	22,321.87	-	-	-	102,050.94	119,804.07	-	-	4,568.74
2179-14	Construction of a Salt Domeby	4/16/2014	546,000.00	-	36,839.07	-	-	-	74,627.78	111,466.85	-	-	-
2180-14	Various Road Improvements	4/16/2014	100,000.00	-	-	-	-	-	20,718.84	20,718.84	-	-	-
2083-14	Acquisition of Police Vehicle In-Car Video System	5/6/2014	125,000.00	-	5,443.00	-	-	-	-	600.00	-	-	4,843.00

**TOWNSHIP OF LAWRENCE
COUNTY OF MERCER, STATE OF NEW JERSEY**

C-6

**GENERAL CAPITAL FUND
SCHEDULE OF IMPROVEMENT AUTHORIZATIONS (CONTINUED)
Year Ended December 31, 2015**

Ordinance Number	Improvement Description	Ordinance Date	Balance December 31, 2014		2015 Authorizations			12/31/2014 Encumbered	Paid or Charged	Authorization Cancelled	Balance December 31, 2015		
			Amount	Funded	Unfunded	Deferred Charges Unfunded	Capital Improvement Fund				Capital Fund Balance/ Reserve	Funded	Unfunded
2186-14	Various Capital Improvements	5/20/2014											
	Purchase of Various Public Works Equipment		78,000.00	-	51,784.00	-	-	-	12,640.00	49,776.82	-	14,647.18	
	Improvements to Municipal Building		325,000.00	-	97,240.00	-	-	-	77,760.00	75,358.58	-	99,641.42	
	Acquisition of Fire/Rescue Equipment		216,850.00	96,664.30	-	-	-	-	95,000.00	170,000.00	21,664.30	-	
	Acquisition of Various Computer and Office Equipment		602,000.00	-	536,954.00	-	-	-	50,000.00	95,336.17	-	491,617.83	
	Various Park and Recreational Facility Equipment		202,000.00	10,100.00	191,900.00	-	-	-	-	94,217.50	-	107,782.50	
2187-14	Various Road Improvements	5/20/2014	946,150.00	-	502,323.89	-	-	-	213,155.18	607,319.80	-	108,159.27	
2188-14	Emergency Medical Services Building	6/17/2014	33,000.00	615.83	-	-	-	-	32,384.17	32,384.17	615.83	-	
2208-15	Various Road Improvements	3/3/2015	1,090,000.00	-	-	1,035,500.00	54,500.00	-	-	645,416.66	-	444,583.34	
2211-15	Various Capital Improvements												
	Purchase of Various Public Works Equipment	3/17/2015	370,000.00	-	-	351,500.00	18,500.00	-	-	358,235.55	-	11,764.45	
	Improvements to Municipal Building		275,500.00	-	-	261,725.00	13,775.00	-	-	129,421.12	-	146,078.88	
	Acquisition of Fire/Rescue Equipment		107,225.00	-	-	101,863.75	5,361.25	-	-	98,403.56	-	8,821.44	
	Acquisition of Fire Apparatus		308,000.00	-	-	292,600.00	15,400.00	-	-	-	15,400.00	292,600.00	
	Acquisition of Various Communication Equipment		59,000.00	-	-	40,311.25	18,688.75	-	-	57,745.52	-	1,254.48	
	Acquisition of Various Computer and Office Equipment		174,100.00	-	-	-	174,100.00	-	-	14,979.95	159,120.05	-	
	Various Park and Recreational Facility Improvements		306,500.00	-	-	291,175.00	15,325.00	-	-	-	15,325.00	291,175.00	
	Acquisition of Various Public Safety Equipment		97,000.00	-	-	92,150.00	4,850.00	-	-	83,232.28	-	13,767.72	
2214-15	Various Road Improvements	4/21/2015	150,000.00	-	-	142,500.00	7,500.00	-	-	148,470.28	-	1,529.72	
2215-15	Energy EFT Retrofit Measures		55,000.00	-	-	-	-	55,000.00	-	49,780.51	-	5,219.49	
			<u>\$ 1,987,275.50</u>	<u>\$ 7,045,629.17</u>	<u>\$ 2,609,325.00</u>	<u>\$ 328,000.00</u>	<u>\$ 55,000.00</u>	<u>\$ 2,449,710.03</u>	<u>\$ 5,002,521.60</u>	<u>\$ 1,966,265.28</u>	<u>\$ 2,032,899.99</u>	<u>\$ 5,473,262.83</u>	
	Ref.		C	C	C-5	C-11		C		C-5	C	C	
								Encumbered	\$ 1,512,992.63	\$ 57,086.58	Reappropriated		
								Disbursed	3,489,528.97	199,178.70	Reappropriated		
									<u>3,489,528.97</u>	<u>1,710,000.00</u>	De. Charge - Unfunded		
									<u>\$ 5,002,521.60</u>	<u>\$ 1,966,265.28</u>			
										C-5			

**TOWNSHIP OF LAWRENCE
COUNTY OF MERCER, STATE OF NEW JERSEY**

C-7

**GENERAL CAPITAL FUND
SCHEDULE OF GENERAL SERIAL BONDS
Year Ended December 31, 2015**

Purpose	Date of Issue	Original Issue	Maturities of Bonds Outstanding		Interest Rate	Balance December 31, 2014	Increased	Decreased	Balance December 31, 2015
			Date	Amount					
General Improvement Bonds of 2008	7/22/2008	\$ 10,000,000.00	2016	900,000	3.750%	\$ 4,600,000.00	\$ -	\$ 1,000,000.00	\$ 3,600,000.00
			2017	900,000	4.000%				
			2018	900,000	4.000%				
			2019	900,000	4.000%				
Refunding Bonds	7/13/2010	5,325,000.00	2016	540,000	4.000%	3,690,000.00	-	495,000.00	3,195,000.00
			2017	535,000	4.000%				
			2018	535,000	4.000%				
			2019	530,000	4.250%				
			2020	530,000	4.250%				
			2021	525,000	5.000%				
Services 2012 Refunding Bonds	8/15/2012	5,120,000.00	2016	1,015,000	2.000%	5,010,000.00	-	1,040,000.00	3,970,000.00
			2017	1,000,000	3.000%				
			2018	985,000	3.000%				
			2019	970,000	3.000%				
						<u>\$ 13,300,000.00</u>	<u>\$ -</u>	<u>\$ 2,535,000.00</u>	<u>\$ 10,765,000.00</u>
<u>Ref.</u>						C	C-4	C-4	C
							Paid by Budget	\$ 2,236,766.00	
							Paid by Open Space	298,234.00	
								<u>\$ 2,535,000.00</u>	
<u>Ref.</u>								C-4	

**TOWNSHIP OF LAWRENCE
COUNTY OF MERCER, STATE OF NEW JERSEY**

C-8

**GENERAL CAPITAL FUND
SCHEDULE OF NJ ENVIRONMENTAL INFRASTRUCTURE TRUST LOANS PAYABLE
Year Ended December 31, 2015**

<u>Description</u>	<u>Issue Date</u>	<u>Amount of Loan</u>	<u>Interest Rate</u>	<u>Maturity Date</u>	<u>Amount</u>	<u>Balance December 31, 2014</u>	<u>Decreased</u>	<u>Balance December 31, 2015</u>
NJEIF Trust 1998A Loan Agreement	11/5/98	\$ 590,000	4.50% 4.50%	2016-17 2018	\$ 40,000.00 45,000.00	\$ 118,415.00	\$ 40,000.00	\$ 78,415.00
Loan Agreement 1998	11/5/98	\$ 585,095	0.00%	2016 2017	29,495.31 12,147.23	72,301.49	30,658.96	41,642.53
						<u>\$ 190,716.49</u>	<u>\$ 70,658.96</u>	<u>\$ 120,057.53</u>
					<u>Ref.</u>	<u>C</u>	<u>C-4</u>	<u>C</u>

**TOWNSHIP OF LAWRENCE
COUNTY OF MERCER, STATE OF NEW JERSEY**

C-9

GENERAL CAPITAL FUND
SCHEDULE OF GREEN TRUST LOANS PAYABLE
Year Ended December 31, 2015

<u>Description</u>	<u>Issue Date</u>	<u>Amount of Loan</u>	<u>Interest Rate</u>	<u>Repayment Period</u>	<u>Amount</u>	<u>Balance December 31, 2014</u>	<u>Decreased</u>	<u>Balance December 31, 2015</u>
Construction of Tiffany Woods	5/9/95	\$ 311,137.50	2.00%	2015	\$ 9,577.98	\$ 9,577.98	\$ 9,577.98	\$ -
Drexel Woods	10/5/98	\$ 1,537,500	2.00%	2016 2017 2018	90,516.13 92,335.50 94,190.81	365,775.67	88,732.60	277,043.07
						<u>\$ 375,353.65</u>	<u>\$ 98,310.58</u>	<u>\$ 277,043.07</u>
					<u>Ref.</u>	C	C-4	C

**TOWNSHIP OF LAWRENCE
COUNTY OF MERCER, STATE OF NEW JERSEY**

C-10

**GENERAL CAPITAL FUND
SCHEDULE OF BOND ANTICIPATION NOTES PAYABLE
Year Ended December 31, 2015**

Improvement Description	Ordinance Number	Date of Issue of Original Note	Date of Issue	Date of Maturity	Interest Rates	Balance			Balance December 31, 2015
						December 31, 2014	Increased	Decreased	
Purchase of Various Public Works Equipment	2020-09/ 2031-09	7/28/09	7/24/14 7/23/15	7/24/15 7/22/16	1.000% 2.000%	\$ 24,193.16	\$ -	\$ 24,193.16	\$ -
Improvements to Municipal Building	2020-09/ 2031-09	7/28/09	7/24/14 7/23/15	7/24/15 7/22/16	1.000% 2.000%	147,094.90		147,094.90	
Acquisition of Fire/Rescue Equipment	2020-09/ 2031-09	7/28/09	7/24/14 7/23/15	7/24/15 7/22/16	1.000% 2.000%	52,250.00		52,250.00	
Acquisition of Various Computer and Office Equipment	2020-09/ 2031-09	7/28/09	7/24/14 7/23/15	7/24/15 7/22/16	1.000% 2.000%	66,500.00		66,500.00	
Hydraulic Lift, Pickup Truck & Electric Lift Gate	2020-09/ 2031-09	7/28/09	7/24/14 7/23/15	7/24/15 7/22/16	1.000% 2.000%	71,250.00		71,250.00	
Various Road Improvements	2021-09	7/28/09	7/24/14 7/23/15	7/24/15 7/22/16	1.000% 2.000%	680,200.00	399,492.14	680,200.00	399,492.14
Various Road Improvements	2051-10	7/28/10	7/24/14 7/23/15	7/24/15 7/22/16	1.000% 2.000%	731,389.84	628,005.93	731,389.84	628,005.93
Various Capital Improvements	2052-10	7/28/10	7/24/14 7/23/15	7/24/15 7/22/16	1.000% 2.000%	899,166.46	827,915.05	899,166.46	827,915.05
Bergen Street Reconstruction	2097-11	7/28/11	7/24/14 7/23/15	7/24/15 7/22/16	1.000% 2.000%	735,884.62	631,692.16	735,884.62	631,692.16
Twin Pines Parking/recreational Facility Improvements	2096-11	7/28/11	7/24/14 7/23/15	7/24/15 7/22/16	1.000% 2.000%	144,400.00	- 140,600.00	144,400.00	140,600.00
Purchase of Various Public Works Equipment	2095-11	7/28/11	7/24/14 7/23/15	7/24/15 7/22/16	1.000% 2.000%	365,593.77	284,486.32	365,593.77	284,486.32
Improvements to Municipal Building	2095-11	7/28/11	7/24/14 7/23/15	7/24/15 7/22/16	1.000% 2.000%	97,470.00	97,470.00	97,470.00	97,470.00
Acquisition of Fire/Rescue Equipment	2095-11	7/28/11	7/24/14 7/23/15	7/24/15 7/22/16	1.000% 2.000%	106,020.00	106,020.00	106,020.00	106,020.00
Acquisition of Various Computer and Office Equipment	2095-11	7/28/11	7/24/14 7/23/15	7/24/15 7/22/16	1.000% 2.000%	47,500.00	47,500.00	47,500.00	47,500.00
Various Park and Recreational Facility Equipment	2095-11	7/28/11	7/24/14 7/23/15	7/24/15 7/22/16	1.000% 2.000%	4,940.00	4,940.00	4,940.00	4,940.00
Carson Road Woods (1678-01)	1667-01	7/26/12	7/24/14 7/23/15	7/24/15 7/22/16	1.000% 2.000%	545,145.25	538,244.68	545,145.25	538,244.68

**TOWNSHIP OF LAWRENCE
COUNTY OF MERCER, STATE OF NEW JERSEY**

**GENERAL CAPITAL FUND
SCHEDULE OF BOND ANTICIPATION NOTES PAYABLE (CONTINUED)
Year Ended December 31, 2015**

Improvement Description	Ordinance Number	Date of Issue of Original Note	Date of Issue	Date of Maturity	Interest Rates	Balance December 31, 2014	Increased	Decreased	Balance December 31, 2015
Acquisition of Helen Avenue	1714-02	7/26/12	7/24/14 7/23/15	7/24/15 7/22/16	1.000% 2.000%	151,517.00	149,599.06	151,517.00	149,599.06
Road Improvements	1749-03	0726/12	7/24/14 7/23/15	7/24/15 7/22/16	1.000% 2.000%	139,485.00	123,986.67	139,485.00	123,986.67
Road Overlay Improvements	1420-95	7/25/13	7/24/14 7/23/15	7/24/15 7/22/16	1.000% 2.000%	10,000.00	10,000.00	10,000.00	10,000.00
Park improvements	1421-95	7/25/13	7/24/14 7/23/15	7/24/15 7/22/16	1.000% 2.000%	20,942.00	20,942.00	20,942.00	20,942.00
Reconstr. Princess Road	1449-96	7/25/13	7/24/14 7/23/15	7/24/15 7/22/16	1.000% 2.000%	19,438.00	19,438.00	19,438.00	19,438.00
PW equip.	1572-99	7/25/13	7/24/14 7/23/15	7/24/15 7/22/16	1.000% 2.000%	13,195.00	13,195.00	13,195.00	13,195.00
Various CPU & office equip	1572-99	7/25/13	7/24/14 7/23/15	7/24/15 7/22/16	1.000% 2.000%	80,075.00	80,075.00	80,075.00	80,075.00
Various Capital Improvements	2127-12	7/25/13	7/24/14 7/23/15	7/24/15 7/22/16	1.000% 2.000%	1,470,600.00	1,433,355.99	1,470,600.00	1,433,355.99
Various Road Improvements	2128-12	7/25/13	7/24/14 7/23/15	7/24/15 7/22/16	1.000% 2.000%	555,750.00	555,750.00	555,750.00	555,750.00
Various Capital Improvements	2156-13	7/25/13	7/24/14 7/23/15	7/24/15 7/22/16	1.000% 2.000%	1,529,500.00	1,529,500.00	1,529,500.00	1,529,500.00
Various Road Improvements	2157-13	7/25/13	7/24/14 7/23/15	7/24/15 7/22/16	1.000% 2.000%	560,500.00	560,500.00	560,500.00	560,500.00
Construction of a Salt Domeby	2179.14	7/23/15	7/23/15	7/22/16	2.000%		518,700.00		518,700.00
Various Road Improvements	2180-14	7/23/15	7/23/15	7/22/16	2.000%		95,000.00		95,000.00
Acquisition of Police Vehicle In-Car Video System	2183-14	7/23/15	7/23/15	7/22/16	2.000%		118,750.00		118,750.00
Various Road Improvements	2187-14	7/23/15	7/23/15	7/22/16	2.000%		689,842.00		689,842.00
						\$ 9,270,000.00	\$ 9,625,000.00	\$ 9,270,000.00	\$ 9,625,000.00
					<u>Ref.</u>	C			C

**TOWNSHIP OF LAWRENCE
COUNTY OF MERCER, STATE OF NEW JERSEY**

C-11

GENERAL CAPITAL FUND
STATEMENT OF CHANGES IN CAPITAL IMPROVEMENT FUND
Year Ended December 31, 2015

	<u>Ref.</u>	
Balance - December 31, 2014	C	\$ 75,641.05
Add: Budget Appropriation from Current Fund	A-2	350,000.00
Less: Improvement Authorization Down Payments Fully Funded Improvement Authorizations	C-6	<u>328,000.00</u>
Balance - December 31, 2015	C	<u>\$ 97,641.05</u>

**TOWNSHIP OF LAWRENCE
COUNTY OF MERCER, STATE OF NEW JERSEY**

C-12

GENERAL CAPITAL FUND
SCHEDULE OF LOAN PROCEEDS RECEIVABLE
Year Ended December 31, 2015

	<u>Ref.</u>	
Balance - December 31, 2014	C	<u>\$ 4,905.00</u>
Balance - December 31, 2015	C	<u><u>\$ 4,905.00</u></u>

**TOWNSHIP OF LAWRENCE
COUNTY OF MERCER, STATE OF NEW JERSEY**

C-13

**GENERAL CAPITAL FUND
SCHEDULE OF BONDS AND NOTES AUTHORIZED BUT NOT ISSUED
Year Ended December 31, 2015**

Ordinance Number	Improvement Description	Balance December 31, 2014	Increased by Authorizations	Grants Received Cancel/ Adjustment	Bond Anticipation Notes Issued	Balance December 31, 2015
1572-99	Municipal Bldg renovations	\$ 246,100.00	\$ -	\$ -	\$ -	\$ 246,100.00
1714-02	Acquisition of Helen Avenue	483.00	-	-	-	483.00
1667-01	Carson Road Woods (1678-01)	50,410.39	-	-	-	50,410.39
1973-08	Milling and Overlay of Princeton Pike	123,250.00	-	-	-	123,250.00
1977-08	Various Road Improvements	18,875.00	-	-	-	18,875.00
1978-08	Various Capital Improvements					
	2 Improvements to Municipal Building	531,950.00	-	-	-	531,950.00
	4 Acquisition of Various Computer and Office Equipment	50,389.07	-	-	-	50,389.07
	6 Communication Equipment	31,825.00	-	-	-	31,825.00
2025-09	Dyson Tract Remediation	1,165,000.00	-	-	-	1,165,000.00
2035-09	Refunding of Callable Improvement Bonds	675,000.00	-	675,000.00	-	-
2057-10	Refunding of Callable Improvement Bonds	905,000.00	-	905,000.00	-	-
2069-10	Major Repair of Colonial Lake Dam	480,918.50	-	-	-	480,918.50
2095-11	Various Capital Improvements					
	Acquisition of Fire Truck	493,050.00	-	-	-	493,050.00
2108-11	Road Repair - Quakerbridge Road & Providence Line Road	47,500.00	-	-	-	47,500.00
2116-12	Refunding of Callable Improvement Bonds	130,000.00	-	130,000.00	-	-
2179-14	Construction of a Salt Domeby	518,700.00	-	-	518,700.00	-
2180-14	Various Road Improvements	95,000.00	-	-	95,000.00	-
2183-14	Acquisition of Police Vehicle In-Car Video System	118,750.00	-	-	118,750.00	-
2186-14	Various Capital Improvements					
	Purchase of Various Public Works Equipment	72,000.00	-	-	-	72,000.00
	Improvements to Municipal Building	308,750.00	-	-	-	308,750.00
	Acquisition of Various Computer and Office Equipment	571,900.00	-	-	-	571,900.00
	Various Park and Recreational Facility Equipment	191,900.00	-	-	-	191,900.00
2187-14	Various Road Improvements	689,842.00	-	-	689,842.00	-
2208-15	Various Road Improvements	-	1,035,500.00	-	-	1,035,500.00
2211-15	Various Capital Improvements					
	Purchase of Various Public Works Equipment	-	351,500.00	-	-	351,500.00
	Improvements to Municipal Building	-	261,725.00	-	-	261,725.00
	Acquisition of Fire/Rescue Equipment	-	101,863.75	-	-	101,863.75
	Acquisition of Fire Apparatus	-	292,600.00	-	-	292,600.00
	Acquisition of Various Communication Equipment	-	40,311.25	-	-	40,311.25
	Various Park and Recreational Facility Improvements	-	291,175.00	-	-	291,175.00
	Acquisition of Various Public Safety Equipment	-	92,150.00	-	-	92,150.00
2214-15	Various Road Improvements	-	142,500.00	-	-	142,500.00
		<u>\$ 7,516,592.96</u>	<u>\$ 2,609,325.00</u>	<u>\$ 1,710,000.00</u>	<u>\$ 1,422,292.00</u>	<u>\$ 6,993,625.96</u>
		Ref. C				C

**TOWNSHIP OF LAWRENCE
COUNTY OF MERCER, STATE OF NEW JERSEY**

C-14

GENERAL CAPITAL FUND
SCHEDULE OF RESERVE FOR MUNICIPAL IMPROVEMENTS
Year Ended December 31, 2015

	<u>Ref.</u>	
Balance - December 31, 2014	C	\$ 2,215,971.31
Increased by:		
Received		<u>11,118.76</u>
		2,227,090.07
Decreased by:		
Disbursed		<u>\$ 27,135.91</u>
		<u>27,135.91</u>
Balance - December 31, 2015	C	<u>\$ 2,199,954.16</u>

**TOWNSHIP OF LAWRENCE
COUNTY OF MERCER, STATE OF NEW JERSEY**

C-15

GENERAL CAPITAL FUND
SCHEDULE OF RESERVE FOR SIDEWALK ASSESSMENTS
Year Ended December 31, 2015

	<u>Ref.</u>	
Balance - December 31, 2014	C	\$ 227,657.89
Add: Assessments Received		11,319.86
Less: Anticipated Revenue		<u>15,000.00</u>
Balance - December 31, 2015	C	<u><u>\$ 223,977.75</u></u>

**TOWNSHIP OF LAWRENCE
COUNTY OF MERCER, STATE OF NEW JERSEY**

C-16

GENERAL CAPITAL FUND
SCHEDULE OF RESERVE FOR TRANSPORTATION TRUST FUND
Year Ended December 31, 2015

	<u>Ref.</u>	
Balance - December 31, 2014	C	<u>\$ 242,871.25</u>
Balance - December 31, 2015	C	<u><u>\$ 242,871.25</u></u>

**TOWNSHIP OF LAWRENCE
COUNTY OF MERCER, STATE OF NEW JERSEY**

C-17

GENERAL CAPITAL FUND
SCHEDULE OF RESERVE FOR FEDERAL AND STATE GRANTS
Year Ended December 31, 2015

	<u>Ref.</u>	
Balance - December 31, 2014	C	<u>\$ 50,410.69</u>
Balance - December 31, 2015	C	<u><u>\$ 50,410.69</u></u>
Ending Balance Consists of:		
Carson Road Woods	C	<u><u>\$ 50,410.69</u></u>

**TOWNSHIP OF LAWRENCE
COUNTY OF MERCER, STATE OF NEW JERSEY**

C-18

GENERAL CAPITAL FUND
SCHEDULE OF RESERVE FOR FUTURE DEBT SERVICE COSTS
Year Ended December 31, 2015

Balance - December 31, 2014	<u>Ref.</u> C	\$ 582,897.55
Add: Premium on Bonds		<u>163,900.00</u>
Balance - December 31, 2015	C	<u><u>\$ 746,797.55</u></u>

**TOWNSHIP OF LAWRENCE
COUNTY OF MERCER, STATE OF NEW JERSEY**

C-19

GENERAL CAPITAL FUND
SCHEDULE OF RESERVE FOR GREEN TRUST
Year Ended December 31, 2015

	<u>Ref.</u>	
Balance - December 31, 2014	C	<u>\$ 33,984.22</u>
Balance - December 31, 2015	C	<u><u>\$ 33,984.22</u></u>

**TOWNSHIP OF LAWRENCE
COUNTY OF MERCER, STATE OF NEW JERSEY**

G

GENERAL FIXED ASSETS ACCOUNT GROUP

	<u>December 31, 2014</u>	<u>Additions</u>	<u>Deletions</u>	<u>December 31, 2015</u>
General Fixed Assets				
Land	\$ 31,034,855.00	\$ 24,900.00	\$ -	\$ 31,059,755.00
Buildings and Improvements	36,856,054.00	-	-	36,856,054.00
Furniture, Fixtures, and Equipment	<u>18,461,004.00</u>	<u>1,014,326.00</u>	<u>72,917.00</u>	<u>19,402,413.00</u>
Total General Fixed Assets	<u>\$ 86,351,913.00</u>	<u>\$ 1,039,226.00</u>	<u>\$ 72,917.00</u>	<u>\$ 87,318,222.00</u>
Investment in General Fixed Assets	<u>\$ 86,351,913.00</u>			<u>\$ 87,318,222.00</u>

SUPPLEMENTARY INFORMATION

**TOWNSHIP OF LAWRENCE
COUNTY OF MERCER, STATE OF NEW JERSEY**

GENERAL COMMENTS
Year Ended December 31, 2015

Contracts and Agreements Required to be Advertised for N.J.S.A. 40A:11-4

Local units and board of educations that have appointed a Qualified Purchasing Agent pursuant to N.J.S.A. 40A:11-9(b) and take advantage of a higher bid threshold pursuant to N.J.S.A. 40A:11-3(a) and 18A:18A-3(a), had their maximum bid threshold increased from \$36,000 to \$40,000. Where the higher bid threshold is authorized, appropriate action should be taken to adjust the locally set amount.

The Township has a Qualified Purchasing Agent.

Please remember that contracts exceeding the new threshold are subject to the appropriate requirements of the Local Public Contracts Law and the Public School Contracts Law. As a result of the change in bid threshold, the 15% threshold for the informal receipt of quotations thresholds of N.J.S.A. 40A:11-6.1(a) and 18A:18A-37(a) also changes. The following table summarizes the new bid and quotation thresholds.

	<u>Bid Threshold</u>	<u>Quotation Threshold</u>
Base amount	\$ 17,500	\$ 2,625
With qualified purchasing agent	\$ 40,000	\$ 6,000

It is also noted that, as an alternative to public advertising, the Township uses state contracts to purchase certain approved items.

The minutes indicate that resolutions were adopted and advertised authorizing the awarding of contracts or agreements for "Professional Services" per N.J.S. 40A:11-5.

In as much as the system of records did not provide for an accumulation of payments for categories for the performance of any work or the furnishing or hiring of any materials or supplies, the results of such an accumulation could not reasonably be ascertained. Disbursements were reviewed, however, if any obvious violations existed, results would be indicated in the findings and recommendations - current year. No obvious violations were noted.

Any interpretation as to possible violation of the N.J.S. 40A:11-4 and N.J.A.C. 5:30-14 would be in the province of the municipal solicitor.

Delinquent Taxes and Tax Title Liens

The last tax sale was held on December 7, 2015. Several items under bankruptcy proceedings or payable on an installment basis were excluded from the sale.

**TOWNSHIP OF LAWRENCE
COUNTY OF MERCER, STATE OF NEW JERSEY**

SCHEDULE OF CURRENT YEAR FINDINGS AND RECOMMENDATIONS

None reported.

**TOWNSHIP OF LAWRENCE
COUNTY OF MERCER, STATE OF NEW JERSEY**

SCHEDULE OF PRIOR YEAR FINDINGS AND RECOMMENDATIONS

None reported.

**TOWNSHIP OF LAWRENCE
COUNTY OF MERCER, STATE OF NEW JERSEY**

SCHEDULE 1

**OFFICIALS IN OFFICE AND SURETY BONDS
UNAUDITED**

Name	Title	Council Term Expires	Surety
Cathleen Lewis	Mayor	December 31, 2017	\$ -
Dr. David Maffei	Councilman	December 31, 2015	-
Michael S. Powers Esq.	Councilman	December 31, 2015	-
Stephen Brame	Councilman (Deceased 7/29/2015)	December 31, 2017	-
Jim Kownacki	Councilman	December 31, 2017	-
Ian Dember	Councilman (7/30/2015 - 11/19/2015)	N/A	-
Christopher Bobbitt	Councilman (Since 11/20/2015)	December 31, 2017	-
Richard S. Krawczun	Township Manager/Chief Financial Officer		600,000
Kathleen Norcia	Township Clerk		-
David Roskos, Esq.	Township Attorney		-
Peter Kiriakatis	Comptroller		-
ASSESSMENT OF TAXES:			
Geoffrey D. Acolia	Tax Assessor		-
COLLECTION OF TAXES:			
Susan E. McCloskey	Tax Collector		1,500,000
OTHER DEPARTMENTS:			
Nicole Finacchio	Municipal Court Administrator		85,000
Mark Ubry	Chief of Police		-
Carol A. Chamberlain	Health Officer		-
James Parvesse	Engineer		-
Christine Lee	Recreation Superintendent (December 2015)		-
Kevin P. Nerwinski	Municipal Judge		85,000
Denise Rettzo	Deputy Municipal Court Administrator		-
Michelle Helmuth	Deputy Municipal Court Administrator		-

Note: In addition to above specific surety bond coverage amounts, all employees are covered under a \$500,000 per incident policy.

**TOWNSHIP OF LAWRENCE
COUNTY OF MERCER, STATE OF NEW JERSEY**

SCHEDULE 2

**SCHEDULE OF TAX RATE, TAX LEVY AND TAX COLLECTIONS
UNAUDITED**

Comparison of Tax Rate Information	2015	2014	2013
Total Tax Rate	\$ 2.670	\$ 2.620	\$ 4.677
<u>Apportionment of Tax Rate</u>			
Municipal	\$ 0.527	\$ 0.527	\$ 0.940
Open Space	0.030	0.030	0.030
County	0.700	0.701	1.280
Local School	1.413	1.362	2.427
<u>Assessed Valuation</u>			
Net Valuation Taxable	\$ 4,529,216,250.00	\$ 4,584,134,874.00	\$ 4,907,278,196.62

Comparison of Tax Levies and Cash Collections

Year	Tax Levy	Cash Collection	% of Levy
2015	\$ 121,193,837.20	\$ 119,739,853.78	98.80%
2014	120,759,033.49	119,401,261.53	98.88%
2013	117,248,644.19	115,018,141.61	98.10%
2012	113,704,529.25	111,156,711.34	97.76%
2011	110,341,778.00	107,009,114.40	96.98%
2010	110,758,572.74	108,192,247.00	97.68%

Delinquent Taxes and Tax Title Liens

Year	Amount of Tax Title Liens	Amount of Delinquent Taxes	Cash Collection
2015	\$ 1,465,114.15	\$ 1,215,079.37	\$ 1,227,409.61
2014	1,447,637.81	1,161,309.61	2,574,451.57
2013	1,625,995.31	1,935,672.73	1,706,212.23
2012	1,543,262.26	2,148,677.43	1,432,354.38
2011	1,460,280.75	2,024,103.40	1,540,054.23
2010	1,360,980.00	2,013,627.00	1,618,350.00

The value of property acquired by liquidation of tax title liens, on the basis of the last assessed valuation of such properties, was as follows:

Year	Balance
2015	\$ 168,410.00
2014	168,410.00
2013	168,410.00
2012	193,410.00
2011	193,410.00
2010	193,410.00

STATISTICAL SECTION

**TOWNSHIP OF LAWRENCE
COUNTY OF MERCER, STATE OF NEW JERSEY**

TABLE 1

**CURRENT FUND EXPENDITURES BY FUNCTION
LAST SIX FISCAL YEARS
UNAUDITED**

Year	General Government	Public Safety	Public Works	Health and Welfare	Recreation and Education	Community Development	Separate Boards and Committees
2015	\$ 12,621,498.00	\$ 9,376,860.00	\$ 5,488,617.00	\$ 470,824.00	\$ 590,030.00	\$ 1,357,878.00	\$ 159,950.00
2014	12,758,710.00	9,395,962.00	5,449,631.00	456,727.00	640,732.00	1,391,029.00	148,750.00
2013	12,944,761.00	9,485,860.00	5,275,022.00	452,886.00	610,033.00	1,336,693.00	149,600.00
2012	12,282,115.31	10,011,379.00	5,442,096.00	459,001.00	605,314.00	2,292,770.61	159,200.00
2011	11,289,495.00	9,429,988.00	5,071,862.00	434,788.00	626,020.00	1,567,672.00	137,900.00
2010	10,584,606.00	9,327,150.00	5,217,729.00	424,854.00	652,289.00	1,679,346.00	293,750.00

Year	Unclassified	Deferred Charges and Statutory Expenditures	State and Federal Grants	Capital Improvements	Debt Service	Reserve for Uncollected Taxes	Total
2015	\$ 1,579,501.00	\$ 3,034,141.00	\$ 631,990.80	\$ 350,000.00	\$ 3,782,230.00	\$ 3,777,856.66	\$ 43,221,376.46
2014	1,610,001.00	3,162,034.00	530,288.90	350,000.00	3,782,061.00	3,816,591.35	43,492,517.25
2013	1,641,202.00	3,048,398.00	712,147.62	125,000.00	4,037,453.00	3,684,883.86	43,503,939.48
2012	1,545,002.00	2,949,585.00	1,741,886.36	350,000.00	3,782,061.00	3,816,591.35	45,437,001.63
2011	1,499,002.00	3,322,119.00	1,226,876.60	100,000.00	3,952,570.00	4,234,958.58	42,893,251.18
2010	1,470,002.00	2,927,068.00	736,078.50	75,000.00	3,698,100.00	4,205,946.35	41,291,918.85

**TOWNSHIP OF LAWRENCE
COUNTY OF MERCER, STATE OF NEW JERSEY**

TABLE 2

**CURRENT FUND REVENUES BY SOURCE
LAST SIX FISCAL YEARS
UNAUDITED**

Year	Taxes (1)	Delinquent Taxes	Fees, Permits, Fines and Licenses	State Aid	Private, State and Federal Grants	Surplus Anticipated	Non-Budget Revenues and Other Items	Total
2015	\$ 24,914,556.12	\$ 1,227,409.61	\$ 5,110,733.43	\$ 3,988,316.00	\$ 626,563.80	\$ 3,750,000.00	\$ 8,283,060.47	\$ 47,900,639.43
2014	25,788,066.86	2,574,451.57	5,610,793.14	3,976,814.00	463,659.94	3,450,000.00	6,696,363.00	48,560,148.51
2013	24,428,316.74	1,706,212.23	4,387,650.33	3,976,814.00	706,906.62	3,350,000.00	7,980,746.88	46,536,646.80
2012	23,453,642.19	1,432,354.38	3,281,410.46	3,982,565.00	1,736,465.36	4,400,000.00	8,927,842.92	47,214,280.31
2011	22,860,219.29	1,540,054.23	2,044,172.54	3,982,565.00	1,215,557.60	5,370,000.00	9,205,833.11	46,218,401.77
2010	22,073,654.65	1,618,350.00	2,970,476.02	3,982,565.00	730,657.50	5,870,000.00	7,358,860.96	44,604,564.13

(1) Excludes taxes allocated to county and school

**TOWNSHIP OF LAWRENCE
COUNTY OF MERCER, STATE OF NEW JERSEY**

TABLE 3

ASSESSED VALUE AND ESTIMATE OF TOTAL VALUE
LAST SIX FISCAL YEARS
UNAUDITED

Year	Net Assessed Valuation Taxable	Market Valuation	Percentage of Net Assessed to Market Value
2015	\$ 4,529,216,250.00	\$ 4,535,517,584.00	99.86%
2014	4,584,134,874.00	4,714,045,185.00	97.24%
2013	2,500,748,969.00	4,907,278,196.62	50.96%
2012	2,527,842,792.00	5,137,891,853.00	49.20%
2011	2,566,192,608.00	5,054,545,219.00	50.77%
2010	2,603,782,710.00	5,500,174,714.00	47.34%

**TOWNSHIP OF LAWRENCE
COUNTY OF MERCER, STATE OF NEW JERSEY**

TABLE 4

**SCHEDULE OF LARGEST TAXPAYERS
UNAUDITED**

Taxpayer	Business Type	2015 Assessed Valuation	As a Percent of Total Net Assessed Taxable Valuation
Bristol-Myers Squibb	Pharmaceutical	\$ 313,610,192	6.92%
Quakerbridge Mall	Retail	144,600,000	3.19%
Education Testing Service	Services	133,954,000	2.96%
Avalon Properties	Real Estate	109,849,600	2.43%
Lenox Dr. Office Park Vision MGMT LLC	Real Estate	101,771,500	2.25%
Mercer Mall	Retail	98,170,000	2.17%
Steward's Crossing	Real Estate	26,917,200	0.59%
Princeton Pike Office Park	Real Estate	24,853,200	0.55%
Lawrence Shopping Center	Real Estate	21,797,800	0.48%
Macy's	Retail	20,250,000	0.45%
		<u>\$ 995,773,492</u>	<u>21.99%</u>

**TOWNSHIP OF LAWRENCE
COUNTY OF MERCER, STATE OF NEW JERSEY**

TABLE 5

**RATIO OF BONDED DEBT, BOND ANTICIPATION NOTES, AND LOANS TO EQUALIZED VALUE AND DEBT PER CAPITA
LAST SIX FISCAL YEARS
UNAUDITED**

<u>Year</u>	<u>Population</u>	<u>Average Equalized Valuation</u>	<u>(1) Gross Debt</u>	<u>Gross Debt per Capita</u>	<u>Ratio of Gross Bonded Debt to Avg. Equalized Valuation</u>	<u>Bonded Debt</u>	<u>Ratio of Net Bonded Debt to Avg. Equalized Valuation</u>	<u>Net Bonded Debt per Capita</u>
2015	33,472	\$ 4,869,893,412.00	\$ 27,780,726.56	\$ 829.97	0.570%	\$ 20,787,100.60	0.427%	\$ 621.03
2014	33,472	4,869,893,412.00	30,652,663.10	915.77	0.629%	23,136,070.14	0.475%	691.21
2013	33,472	4,982,907,275.33	32,079,763.18	958.41	0.644%	26,685,371.56	0.536%	797.24
2012	33,472	5,094,527,654.00	33,336,068.00	995.94	0.654%	26,185,605.00	0.514%	782.31
2011	33,472	5,278,228,409.00	35,150,002.00	1,050.13	0.666%	27,633,409.04	0.524%	825.57
2010	33,472	5,430,234,110.67	38,122,516.00	1,138.94	0.702%	30,797,033.82	0.567%	920.08

(1) Excludes Gross Debt for School Purposes

**TOWNSHIP OF LAWRENCE
COUNTY OF MERCER, STATE OF NEW JERSEY**

TABLE 6

**RATIO OF ANNUAL DEBT SERVICE EXPENDITURES - CURRENT FUND
LAST SIX FISCAL YEARS
UNAUDITED**

Year	Principal	Interest	Total Debt Service	Total Current Fund Governmental Expenditures	Ratio of Total Debt Service to Current Fund Expenditures
2015	\$ 3,300,000.00	\$ 482,230.00	\$ 3,782,230.00	\$ 43,221,376.46	8.75%
2014	3,272,318.00	509,743.00	3,782,061.00	43,492,517.25	8.70%
2013	3,462,000.00	575,453.00	4,037,453.00	43,503,939.48	9.28%
2012	3,489,147.25	605,693.82	4,094,841.07	45,469,523.55	9.01%
2011	3,294,000.00	658,570.00	3,952,570.00	42,893,251.00	9.21%
2010	2,850,000.00	848,100.00	3,698,100.00	41,291,918.85	8.96%

**TOWNSHIP OF LAWRENCE
COUNTY OF MERCER, STATE OF NEW JERSEY**

TABLE 7

DEMOGRAPHIC STATISTICS
LAST SIX FISCAL YEARS
UNAUDITED

<u>Year</u>	<u>Unemployment Rate (1)</u>	<u>Population</u>
2015	4.00%	33,472
2014	4.40%	33,472
2013	5.60%	33,472
2012	6.26%	33,472
2011	6.10%	33,472
2010	6.10%	33,472

(1) - Per Homefacts and NJ Unemployment data

**TOWNSHIP OF LAWRENCE
COUNTY OF MERCER, STATE OF NEW JERSEY**

TABLE 8

MISCELLANEOUS STATISTICS

Date of Incorporation	1798
Form of Government	Township Council/Manager
Area in Square Miles	22
Miles of Streets	99